



Gayle Bunn  
Designer



CROCHET | SKILL LEVEL: INTERMEDIATE

## ABBREVIATIONS

**Approx** = Approximately

**Beg** = Beginning

**Ch** = Chain(s)

**Cont** = Continue(ity)

**Cr4B** = Skip next 2 stitches.

1 dcfp around post of each of next 2 stitches. *Working behind 2 dcfp just made*, 1 dcfp around post of each of 2 skipped stitches 2 rows below.

**Cr4F** = Skip next 2 stitches.

1 dcfp around post of each of next 2 stitches. *Working in front of 2 dcfp just made*, 1 dcfp around post of each of 2 skipped stitches 2 rows below.

**Dc** = Double crochet

**Dcbp** = Yoh and draw up a loop around post of next stitch at back of work, inserting hook from right to left. (Yoh and draw through 2 loops on hook) twice.

**Dcftp** = Yoh and draw up a loop around post of next stitch at front of work, inserting hook from right to left. (Yoh and draw through 2 loops on hook) twice.

**Hdc** = Half double crochet

**Pat** = Pattern

**Rem** = Remaining

**Rep** = Repeat

**RS** = Right side

**Sc** = Single crochet

**Sc2tog** = Draw up a loop in each of next 2 sc. Yoh and draw through all 3 loops on hook

**Sl st** = Slip stitch

**Sp(s)** = Space(s)

**St(s)** = Stitch(es)

**Tog** = Together

**WS** = Wrong side

**Yoh** = Yarn over hook

## MATERIALS

Patons® Classic Wool Worsted™ (3.5 oz/100 g; 194 yds/177 m)

Honey (77756)

**3 balls**

Size U.S. H/8 (5 mm) crochet hook **or size needed to obtain gauge.**  
Stitch markers.

## MEASUREMENTS

**Front:** Approx 12" [30.5 cm] wide x 10" [25.5 cm] deep from shoulder.

**Back:** Approx 12" [30.5 cm] wide x 8" [20.5 cm] deep from shoulder.

## GAUGE

14 sc and 16 rows = 4" [10 cm].

## INSTRUCTIONS

### Notes:

- Ch 2 at beg of row counts as hdc.
- When working Cr4F, Cr4B and Dcftp sts in cable pat on RS rows, always skip sts directly behind them from previous row.
- Front has Cable Pat and is 2" [5 cm] longer than Back.
- Back has side details with plain center section.

## FRONT

\*\*\***Ribbing:** Ch 46. See diagram on page 4.

**1st row:** (RS). 1 hdc in 3rd ch from hook (counts as 2 hdc). 1 hdc in each ch to end of chain. Turn. 45 hdc.

**2nd row:** Ch 2. \*1 dcftp around post of next hdc. 1 dcftp around post of next hdc. Rep from \* to last 2 sts. 1 dcftp around post of next hdc. 1 hdc in top of turning ch-2. Turn.

**3rd row:** Ch 2. \*1 dcftp around post of next st. 1 dcftp around post of next st. Rep from \* to last 2 sts. 1 dcftp around post of next st. 1 hdc in top of turning ch-2. Turn.

**4th row:** Ch 2. \*1 dcftp around post of next st. 1 dcftp around post of next st. Rep from \* to last 2 sts. 1 dcftp around post of next st. 1 hdc in top of turning ch-2. Turn.\*\*\*

Proceed in pat as follows:

**Set-up 1st row:** (RS). Ch 1. (1 sc in next st. 1 dcftp around post of next st 2 rows below) 3 times. 1 sc in each of next 5 sts. Cr4F. 1 sc in each of next 6 sts. Cr4F. 1 sc in each of next 2 sts. 2 sc in next sc. 1 sc in each of next 2 sts. Cr4F. 1 sc in each of next 5 sts. (1 dcftp around post of next st. 1 sc in next st) 3 times. Turn. 46 sts.

**2nd and WS rows:** Ch 1. 1 sc in each st to end of row. Turn.

**3rd row:** Ch 1. (1 sc in next sc. 1 dcftp around post of next st 2 rows below) 3 times. 1 sc in each of next 4 sts. \*1 dcftp around post of each of next 2 dcftp 2 rows below. 1 sc in each of next 2 sts. 1 dcftp around post of each of next 2 dcftp 2 rows below. 1 sc in each of next 2 sts. Rep from \* twice more. (1 dcftp around post of next dcftp 2 rows below. 1 sc in next sc) 3 times. Turn.

**5th row:** Ch 1. (1 sc in next sc. 1 dcftp around post of next st 2 rows below) 3 times. 1 sc in each of next 3 sts. \*1 dcftp around post of each of next 2 dcftp 2 rows below. 1 sc in each of next 4 sts. 1 dcftp around post of each of next 2 dcftp 2 rows below.\*\* 1 sc in each of next 2 sts. Rep from \* once more, then from \* to \*\* once. 1 sc in each of next 3 sts. (1 dcftp around post of next dcftp 2 rows below. 1 sc in next sc) 3 times. Turn.

**7th row:** Ch 1. (1 sc in next sc. 1 dcftp around post of next st 2 rows below) 3 times. 1 sc in each of next 2 sts. 1 dcftp around post of each of next 2 dcftp 2 rows below. \*1 sc in each of next 6 sts. 1 dcftp around post of each of next 4 dcftp

2 rows below. Rep from \* once more. 1 sc in each of next 6 sts. 1 dcftp around post of each of next 2 dcftp 2 rows below. 1 sc in each of next 2 sts. (1 dcftp around post of next dcftp 2 rows below. 1 sc in next sc) 3 times. Turn.

**9th row:** Ch 1. (1 sc in next sc. 1 dcftp around post of next st 2 rows below) 3 times. 1 sc in each of next 2 sts. 1 dcftp around post of each of next 2 dcftp 2 rows below. \*1 sc in each of next 6 sts. Cr4B. Rep from \* once more. 1 sc in each of next 6 sts. 1 dcftp around post of each of next 2 dcftp 2 rows below. 1 sc in each of next 2 sts. (1 dcftp around post of next dcftp 2 rows below. 1 sc in next sc) 3 times. Turn.

**11th row:** Ch 1. (1 sc in next sc. 1 dcftp around post of next st 2 rows below) 3 times. 1 sc in each of next 3 sts. \*1 dcftp around post of each of next 2 dcftp 2 rows below. 1 sc in each of next 4 sts. 1 dcftp around post of each of next 2 dcftp 2 rows below.\*\* 1 sc in each of next 2 sts. Rep from \* once more, then from \* to \*\* once. 1 sc in each of next 3 sts. (1 dcftp around post of next dcftp 2 rows below. 1 sc in next sc) 3 times. Turn.

**13th row:** Ch 1. (1 sc in next sc. 1 dcfp around post of next st 2 rows below) 3 times. 1 sc in each of next 4 sts. \*1 dcfp around post of each of next 2 dcfp 2 rows below. 1 sc in each of next 2 sts. 1 dcfp around post of each of next 2 dcfp 2 rows below. 1 sc in each of next 4 sts. Rep from \* twice more. (1 dcfp around post of next dcfp 2 rows below. 1 sc in next sc) 3 times. Turn.

**15th row:** Ch 1. (1 sc in next sc. 1 dcfp around post of next st 2 rows below) 3 times. 1 sc in each of next 5 sts. \*1 dcfp around post of each of next 4 dcfp 2 rows below. 1 sc in each of next 6 sts. Rep from \* once more. 1 dcfp around post of each of next 4 dcfp 2 rows below. 1 sc in each of next 5 sts. (1 dcfp around post of next dcfp 2 rows below. 1 sc in next sc) 3 times. Turn.

**17th row:** Ch 1. (1 sc in next sc. 1 dcfp around post of next st 2 rows below) 3 times. 1 sc in each of next 5 sts. (Cr4F. 1 sc in each of next 6 sts) twice. Cr4F. 1 sc in each of next 5 sts. (1 dcfp around post of next st. 1 sc in next st) 3 times. Turn.

**18th row:** As 2nd row. Rep 3rd to 18th rows for Cable Pat until work from beg measures approx 7½" [19 cm], ending on a 18th row of pat.

**Shape neck: Next row:** (RS). Pat across 16 sts (neck edge). Turn. Leave rem sts unworked.

**Next row:** Ch 1. Sc2tog. 1 sc in each st to end of row. Turn.

**Next row:** Ch 1. Pat to last 2 sts. Sc2tog. Turn.

Rep last 2 rows twice more, then 1st row once. 9 sts rem. Work 3 rows even in pat. Fasten off.

With RS facing, skip next 14 sts. Join yarn with sl st to next st. Ch 1 (**does not** count as st). Pat to end of row. Turn.

**1st row:** Ch 1. 1 sc in each st to last 2 sts. Sc2tog. Turn.

**2nd row:** Ch 1. Sc2tog. Pat to end of row. Turn.

Rep last 2 rows twice more, then 1st row once. 9 sts rem.

Work 3 rows even in pat. Fasten off.

## BACK

Work from \*\*\* to \*\*\* as given for Front.

**Set-up 1st row:** (RS). Ch 1. (1 sc in next st. 1 dcfp around post of next st 2 rows below) 3 times. 1 sc in each of next 16 sts. 2 sc in next st. 1 sc in each of next 16 sts. (1 dcfp around post of next st. 1 sc in next st) 3 times. Turn. 46 sts.

**2nd row:** Ch 1. 1 sc in each st to end of row. Turn.

**3rd row:** Ch 1. (1 sc in next sc. 1 dcfp around post of next st 2 rows below) 3 times. 1 sc in each of next 34 sts. (1 dcfp around post of next st. 1 sc in next st) 3 times. Turn.

Rep last 2 rows until work from beg measures 8" [20.5 cm], ending on a WS row.

Fasten off.

## COLLAR

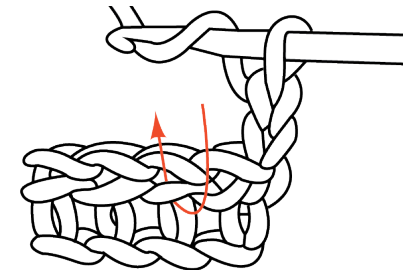
Sew shoulder seams.

**Note:** Collar is worked side to side.

Ch 30.

**1st row:** (RS). 1 hdc in 3rd ch from hook (counts as 2 hdc). 1 hdc in each ch to end of chain. Turn. 29 hdc.

**2nd row:** Ch 2. \*1 hdc in horizontal bar created below next hdc (below loops normally worked – see diagram). Rep from \* to last st. 1 hdc in top of ch-2. Turn.



Rep last row until Collar (when slightly stretched) measures length to fit around neck edge. Fasten off.

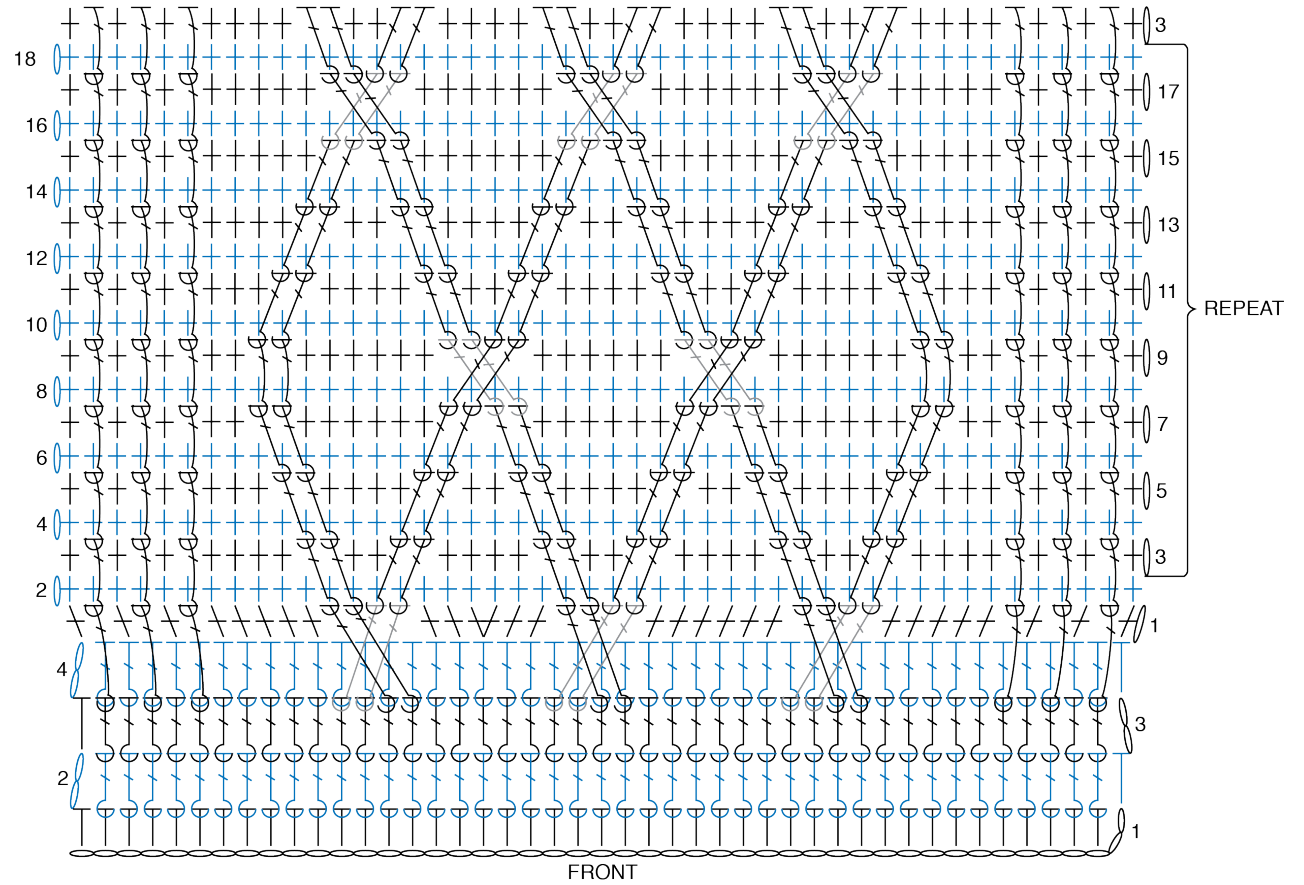
Sew side of Collar to neck edge, having Collar seam at left shoulder. Sew Collar seam. Fold Collar in half towards RS as shown.



Front



Back



STITCH KEY

○ = chain (ch)

⊕ = single crochet (sc)

⊥ = half double crochet (hdc)

⌋ = back post double crochet (dcbb)

⌋ = front post double crochet (dcfp)

⌋ = Cr4B

⌋ = Cr4F