



Nicole Winer
Designer



CROCHET | SKILL LEVEL: **EASY**

ABBREVIATIONS

Approx = Approximately
Beg = Beginning
Ch = Chain(s)
Dc = Double crochet
Pat = Pattern

Rem = Remaining
Rep = Repeat
Rnd(s) = Round(s)
RS = Right side
Sc = Single crochet

Sl st(s) = Slip stitch(es)
Sp(s) = Space(s)
St(s) = Stitch(es)
Tog = Together
WS = Wrong side

MEASUREMENTS

Approx 12½" x 14½" [32 x 37 cm], excluding handles.

GAUGE

18 dc and 8 rows = 4" [10 cm].

INSTRUCTIONS

Notes: Ch 4 at beg of rnd counts as dc and ch 1.
 Ch 3 at beg of rnd counts as dc.

Ch 112. Join to beg working in rnd, being careful not to twist ch.

1st rnd: Ch 1. 1 sc in each ch around. Join with sl st to first sc. 112 sc.

2nd rnd: Ch 3. 1 dc in each sc around. Join with sl st to top of ch-3.

3rd rnd: Ch 3. 1 dc in each dc around. Join with sl st to top of ch-3.

Rep last rnd until work measures 2" [5 cm].

MATERIALS

Patons® Linen™ (3.5 oz/100 g; 275 yds/251 m)

Blue Hosta (14015)

2 balls

Size U.S. F/5 (3.75 mm) Susan Bates® Silvalume® crochet hook **or size needed to obtain gauge.** Susan Bates® yarn needle.

Beg working in Dotty Pat (see diagram on page 3) as follows:

1st rnd: Ch 4. *Skip next dc. 1 dc in next dc. Ch 1. Rep from * around. Join with sl st to 3rd ch of ch-4.

2nd rnd: Ch 4. Skip next st. (1 dc in next dc. Ch 1. Skip next st) twice. *1 dc in each of next 3 sts (in dc. Ch-1 sp. dc). (Ch 1. Skip next st. 1 dc in next dc) 6 times. Ch 1. Skip next st. Rep from * around. Join with sl st to 3rd ch of beg ch-4.

3rd rnd: Ch 4. Skip next st. 1 dc in next dc. Ch 1. Skip next st. 1 dc in each of next 2 sts. *1 dc in each of next 5 sts. (Ch 1. Skip next st. 1 dc in next dc) 5 times. 1 dc in next st. Rep from * around. Join with sl st to 3rd ch of beg ch-4.

4th rnd: Ch 4. Skip next st. 1 dc in each of next 4 sts. *1 dc in each of next 7 sts. (Ch 1. Skip next st. 1 dc in next dc) 3 times. 1 dc in each of next 3 sts. Rep from * around. Join with sl st to 3rd ch of beg ch-4.

5th and 6th rnds: As 4th rnd, twice.

7th rnd: As 3rd rnd.

8th rnd: Ch 4. Skip next st. (1 dc in next dc. Ch 1. Skip next st) twice. *1 dc in each of next 3 sts. (Ch 1. Skip next st. 1 dc in next dc) 6 times. Ch 1. Skip next st. Rep from * around. Join with sl st to 3rd ch of beg ch-4.

9th rnd: Ch 4. Skip next st. *1 dc in next dc. Ch 1. Skip next st. Rep from * around. Join with sl st to 3rd ch of beg ch-4.

10th rnd: Ch 4. (Skip next st. 1 dc in next dc. Ch 1) twice. Skip next st. *(dc in next dc. Ch 1. Skip next st.) 4 times. 1 dc in each of next 3 sts (dc. Ch-1 sp. dc). (Ch 1. Skip next st. 1 dc in next dc) twice. Ch 1. Skip next st. Rep from * around. Join with sl st to 3rd ch of beg ch-4.

11th rnd: Ch 3. 1 dc in each of next 2 sts. Ch 1. Skip next st. 1 dc in next dc. Ch 1. Skip next st. *(1 dc in next dc. Ch 1. Skip next st) 3 times. 1 dc in each of next 7 sts. Ch 1. Skip next st. 1 dc in next dc. Ch 1. Skip next st. Rep from * around. Join with sl st to top of ch-3.

12th to 14th rnds: Ch 3. 1 dc in each of next 4 sts. Ch 1. Skip next st. *(1 dc in next dc. Ch 1. Skip next st) twice. 1 dc in each of next 11 sts. Ch 1. Skip next st. Rep from * around. Join with sl st to top of ch-3.

15th rnd: As 11th rnd.

16th rnd: As 10th rnd.

17th rnd: As 9th rnd.

18th to 25th rnds: Rep 2nd to 9th rnds once more.

26th rnd: Ch 3. 1 dc in each dc and ch-1 sp around. Join with sl st to top of ch-3. 112 dc.

27th and 28th rnds: Ch 3. 1 dc in next dc. 1 dc in each dc around. Join with sl st to top of ch-3.

HANDLES

1st rnd: Ch 1. 1 sc in first dc. 1 sc in each of next 17 dc. **Turn.** Leave rem sts unworked.

****Handle: 1st row:** Ch 1. 1 sc in each of first 8 sc. **Turn.** Leave rem sts unworked.

2nd row: (RS). Ch 1. 1 sc in each of 8 sc. **Turn.**

Rep last row until Handle measures 22" [56 cm], ending on a RS row.

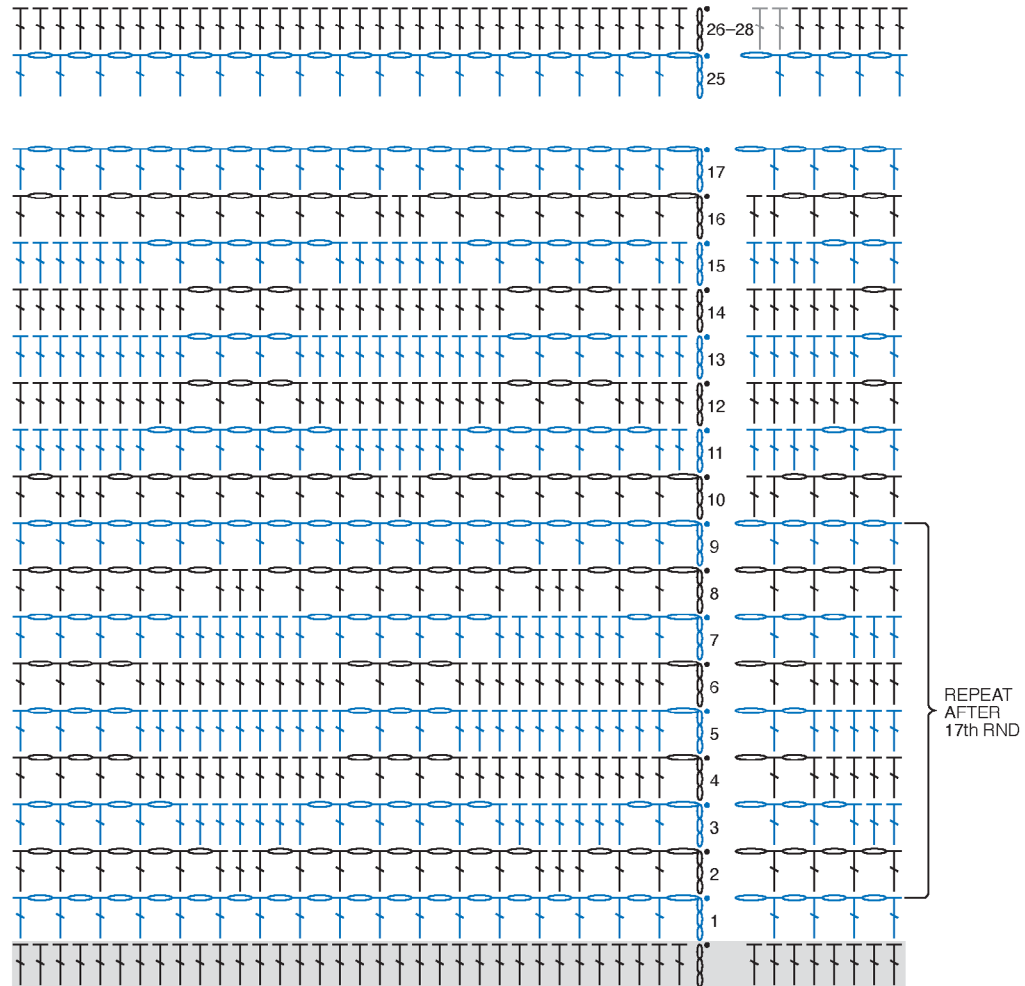
Join Handle: Ch 1. Skip next 20 dc at top of bag. With WS of Handle and Bag tog, align 8 sts of Handle with next 8 dc of Bag. *Working through both thicknesses*, join Handle to Bag with sl st in each of next 8 sts.** Ch 1. 1 sc in each of next 28 dc (at top edge of Bag). **Turn.** Leave rem sts unworked. Work from ** to ** as given for Handle.

Ch 1. 1 sc in each of next 10 dc. Join with sl st to first sc. Fasten off.

Finish Handles: Fold Handle in half with side edges tog. Join yarn with sl st to bottom of handle. *Working through both thicknesses*, work 1 row of sc evenly along edge to join sides of Handle. Fasten off at end of Handle.

Rep for other Handle.

Sew base of Bag closed.



REDUCED SAMPLE OF PATTERN

STITCH KEY

○ = chain (ch)

⌋ = double crochet (dc)