

MATERIALS

Patons® Grace™ (1.75 oz/50 g; 136 yds/125 m)
Contrast A Taupe (62012) **2 balls**
Contrast B Peacock (62201) **1 ball**
Contrast C Night (62040) **1 ball**
Contrast D Wildberry (62436) **1 ball**

Size U.S. D/3 (3.25 mm) crochet hook **or size needed to obtain gauge.**

ABBREVIATIONS:

Approx = Approximately
Beg = Beginning
Ch = Chain(s)
Dc = Double crochet
Dtr = (Yoh) 3 times. Insert hook into indicated stitch. (Yoh and draw through 2 loops on hook) 4 times.

Dtr2tog = *(Yoh) 3 times. Insert hook into indicated stitch. (Yoh and draw through 2 loops on hook) 3 times. Rep from * once more. Yoh and draw through rem 3 loops on hook.
Pat = Pattern
Rem = Remaining

Rep = Repeat
Rnd(s) = Round(s)
RS = Right side
Sc = Single crochet
Sl st = Slip stitch
Sp(s) = Space(s)
St(s) = Stitch(es)
WS = Wrong side
Yoh = Yarn over hook

 CROCHET | SKILL LEVEL: INTERMEDIATE

MEASUREMENTS

Approx 10½" [26.5 cm] wide x 6" [15 cm] high (when folded).

GAUGE

23 sc and 26 rows = 4" [10 cm].

INSTRUCTIONS

Notes: Do not break A. Carry A when not in use loosely up WS of work.

To change colors, work to last 2 loops on hook of first color. Yoh with new color, draw through rem 2 loops and proceed.

Ch 3 at beg of row counts as dc throughout.

Back and Flap

**With A, ch 56. (See chart on page 2).

1st row: (WS). 1 sc in 2nd ch from hook. 1 sc in each ch to end of chain. Turn. 55 sc.

2nd row: Ch 1. 1 sc in each of first 3 sc. *Ch 1. Miss next sc. 1 sc in each of next 3 sc. Rep from * to end of row. Turn.

3rd row: Ch 3. 1 dc in each sc and ch-1 sp to end of row. Join B. Turn.

4th row: With B, ch 1. 1 sc in first dc. *Working in front of work*, 1 dtr in missed st 2 rows below. Miss next dc (behind dtr). 1 sc in next dc. Ch 1. Miss next dc. 1 sc in next dc. *Working in front of work*, dtr2og over same missed st as previous dtr and

next missed st 2 rows below. *Miss next dc (behind dtr2tog). 1 sc in next dc. Ch 1. Miss next dc. 1 sc in next dc.** *Working in front of work*, dtr2og over same missed st as previous dtr2tog and next missed st 2 rows below. Rep from * to last 5 sts, then rep from * to ** once. *Working in front of work*, dtr in same missed st as previous dtr2tog. Miss next dc (behind dtr). 1 sc in top of turning ch. Turn.

5th row: As 3rd row. Join A. Turn.

6th and 7th rows: With A, as 4th and 5th rows. Join C.

8th and 9th rows: With C, as 4th and 5th rows. Join A.

10th and 11th rows: With A, as 4th and 5th rows. Join D.

12th and 13th rows: With D, as 4th and 5th rows. Join A.

14th and 15th rows: With A, as 4th and 5th rows. Join B.**

Rep 4th to 15th rows for pat until work from beg measures approx 10" [25.5 cm], ending on a 10th row of pat. Fasten off. Place markers on side edges 4½" [11.5 cm] down from final row to mark fold line of Flap.

Front

Work from ** to ** as given for Back and Flap.

Rep 4th to 15th rows for pat until work from beg measures approx 5" [12.5 cm], ending on a 6th row of pat. Fasten off.

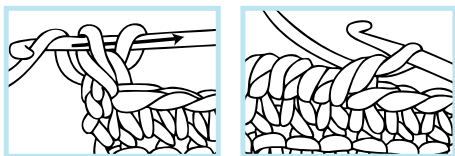
Note: Foundation row of Front will be top edge.

FINISHING

Flap edging: 1st row: (RS). Join C with sl st at side marker. Ch 1. Work sc evenly around Flap edge to opposite marker, working 3 sc in corners. **Do not** turn.

2nd row: Ch 1. Working from **left to right**, instead of from **right to left as usual**, work 1 reverse sc in each st to end of row. Fasten off.

Reverse Sc Diagram



Join Back and Front: With WS facing each other, place Front on top of Back (noting foundation row of Front will be top edge).

1st row: Working through both thicknesses, join C at RS of Front with sl st at fold line. Ch 1. Work sc evenly around outer edge to opposite side, working 3 sc in corners.

Do not turn.

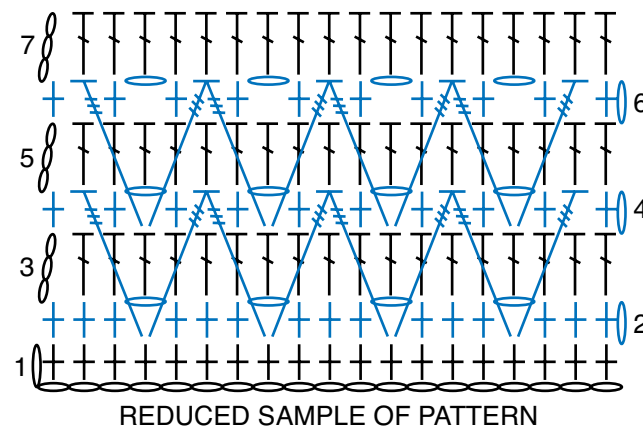
2nd row: Ch 1. Working from **left to right**, instead of from **right to left as usual**, work 1 reverse sc in each st to end of row. Fasten off.

Strap: With 2 strands of C, make a chain 52" [132 cm] long.

Turn chain on its side and working into horizontal 'bumps' at back of chain, sl st in each 'bump' to end of chain. Fasten off.

Sew each end of Strap to Bag at corners.

Chart



STITCH KEY

- = chain (ch)
- ⊥ = single crochet (sc)
- ┆ = double crochet (dc)
- ┆ = double treble crochet (dtr)
- ┆ = double treble 2 together (dtr2tog)