



## MATERIALS

**Coats & Clark® Dual Duty XP® All-purpose Thread**

**Coats & Clark® Button & Craft Thread**

**Red Heart® SuperSaver® yarn, Aran**

2/3 yd (60.96cm) Sherpa fur, 60" (152.40cm) wide

1/8 yd (11.43cm) linen

1/4 yd (22.86cm) fabric, for blanket

1/3 yd (30.48cm) mini ball fringe

1/3 yd (30.48cm) tasseled fringe, 1 1/4" (3.81cm) long

1 yd (.91m) braid, 1/4" (.64cm) wide

(2) safety-back animal eyes, 12mm

(6) jingles bells, 3/8" (.96cm)

Polyester fiberfill stuffing

Tapestry needle



SEWING | SKILL LEVEL: **BEGINNER**

## Featuring Coats & Clark Dual Duty XP®

Lolo, with her furry fleece, funny face and festive blanket, is sure to be a crowd pleaser. Whether she's a stuffed animal for a child, or she just graces a shelf, she's the epitome of cuteness.

## MEASUREMENTS

18" (45.72cm) tall, excluding ears

## CUTTING

Print templates on pages 4-6. Note that pages 5 and 6 are printed at 200%.

When cutting fur, be sure the tops of all pieces are facing the same direction. Transfer all pattern markings to the fabric wrong side.

## From linen, cut:

- (1) nose
- (2) ear
- (8) hoof

## From blanket fabric, cut:

- (2) rectangles, 4 1/2" x 8" (11.43cm x 20.32cm)

**Note:** Seam allowances are 1/4" (.64cm).

## From Sherpa for fur, cut:

- (2) side body - enlarge 200%
- (2) underbody - enlarge 200%
- (2) tail
- (2) ear
- (1) head gusset



## TIPS for sewing fur

- Finger-press seams open—don't use an iron as it can melt the plush.
- If you have a walking foot or dual feed, this is a great time to use it.
- Use spring clips to hold seams instead of trying to pin them. Pins tend to get lost in the fur thickness.
- Fur tends to scoot and move as you sew it, so check each seam after sewing to be sure all edges are caught. If not, go back a restitch so you have a full seam allowance.
- If fur fibers are caught in the seam, use a pin to pull the fibers out making a less conspicuous seam.
- Be sure to clean your sewing machine after sewing with fur.
- Assemble the Ears and Tail
- With right sides together, sew together one linen ear and one Sherpa ear, leaving the lower edge open. Repeat for the second ear.

- Turn the ears right side out through the opening. Fold the lower edge in half with linen sides together and baste in place.
- In the same manner, sew together the two tail pieces. Turn, fold in half and baste.
- Set aside the prepared pieces.

## ASSEMBLE THE HOOFS

1. With right sides up, lap the upper hoof edge to the hoof line on the Sherpa side body and underbody and pin in place.
2. Using a medium width and length zigzag, stitch across each hoof upper edge.
3. Baste the curved edge of each hoof to the Sherpa leg below it. Trim the linen to match, if needed. Set aside.

## ASSEMBLE THE HEAD

4. With the wide end of the head gusset facing the nose area and raw edges matching, stitch the gusset to the head area on one side, stopping stitching at the mark.

5. Repeat to attach the remaining gusset long edge to the opposite side of the head. Continue the head stitching about 3" (7.62cm) below the end of the gusset.
6. Sew the front throat area together for about 3" (7.62cm).
7. With right sides together, fold the nose in half, matching the curved edges. Stitch the edges together, backstitching at both ends. The nose is now a cone.
8. Matching top and bottom centers and raw edges, with the nose seam down, sew the nose to the head. This is a circular seam, much like a set-in sleeve, so sew slowly and carefully. Push the nose through to be sure it's straight and even. Restitch the seam next to the first row of stitching.

## ADD THE FACE/EARS

1. Using Craft thread, hand-stitch a smile and nose on the nose cone.

2. Following the manufacturer's instructions, insert the eyes in the desired location, about ¾" (1.91cm) from the nose outer seam and ¾" (1.91cm) from each head gusset seam. Be sure to snap the safety backs on snugly. If you prefer, hand-stitch eye circles using heavy thread.
3. Using matching thread, zigzag the lower edge of each ear. Stuff the head lightly to determine a good ear location, then hand-stitch firmly to the top of the head at a slight angle with the folds toward the center.

## ASSEMBLE THE BODY

1. With the fold at the top, baste the tail just above the dot indicated on one side body hind end.
2. Finish sewing the neck and side body seam to the front/back dots.
3. With right sides together, sew the upper belly seam to join the two underbodies. Leave a 4" (10.16cm) opening in the center.

4. With right sides together and noting which is the front and which is the back of the underbody, pin the underbody to the side body sections, matching the hoof lines. Sew around the edges.
5. Turn the llama right side out through the underbody opening.

## **FINISHING**

1. Stuff the llama, firmly packing the filler into the face and neck area, feet/legs and body. Use a long narrow tool, like a stuffing tool, point turner, pencil, etc. to get the stuffing into the feet and head/neck areas. Note that the fur has a knit backing and will stretch as you stuff, so pack the fiberfill firmly in all areas.
2. Hand-stitch the underbody opening closed using two strands of thread and pulling very tightly to secure the edges together.
3. If you want the tail close to the body, hand-stitch the top portion to the hind end.

4. Depending on how firmly you stuffed the body, the legs may tend to splay. If this is an issue for your llama, hand tack the upper inside legs together so the she will stand up proudly.

## **ADD THE MANE**

1. Thread a long length of yarn into a tapestry needle and form a loopy mane across the upper head area between the ears, anchoring each into the fur backing. The mane can cover as large an area as you want to create a look you like.
2. Yarn loop ends can be anchored at the base with hand stitching so they don't pull out if this is to be a toy that's regularly played with.

## **ASSEMBLE THE BLANKET**

1. Pin the rectangles right sides together and sew around the perimeter, leaving a 2" (5.08cm) opening on one long edge for turning. Press the seams open.
2. Turn the blanket right side out, push out the corners and press the edges.

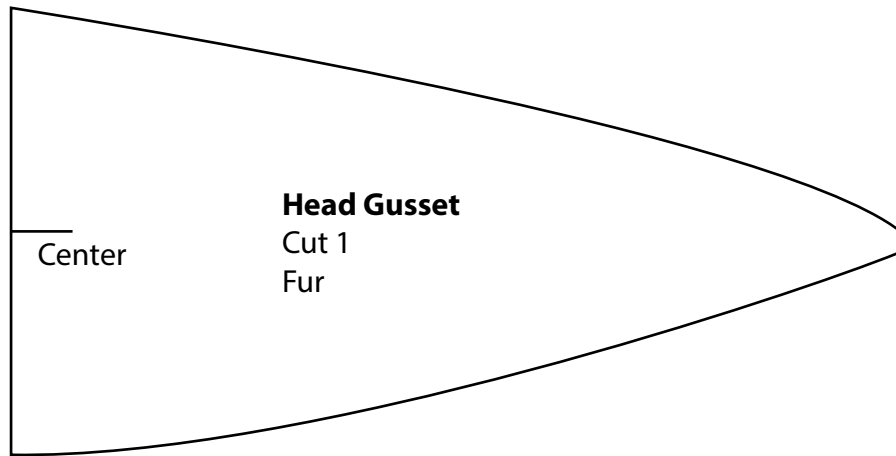
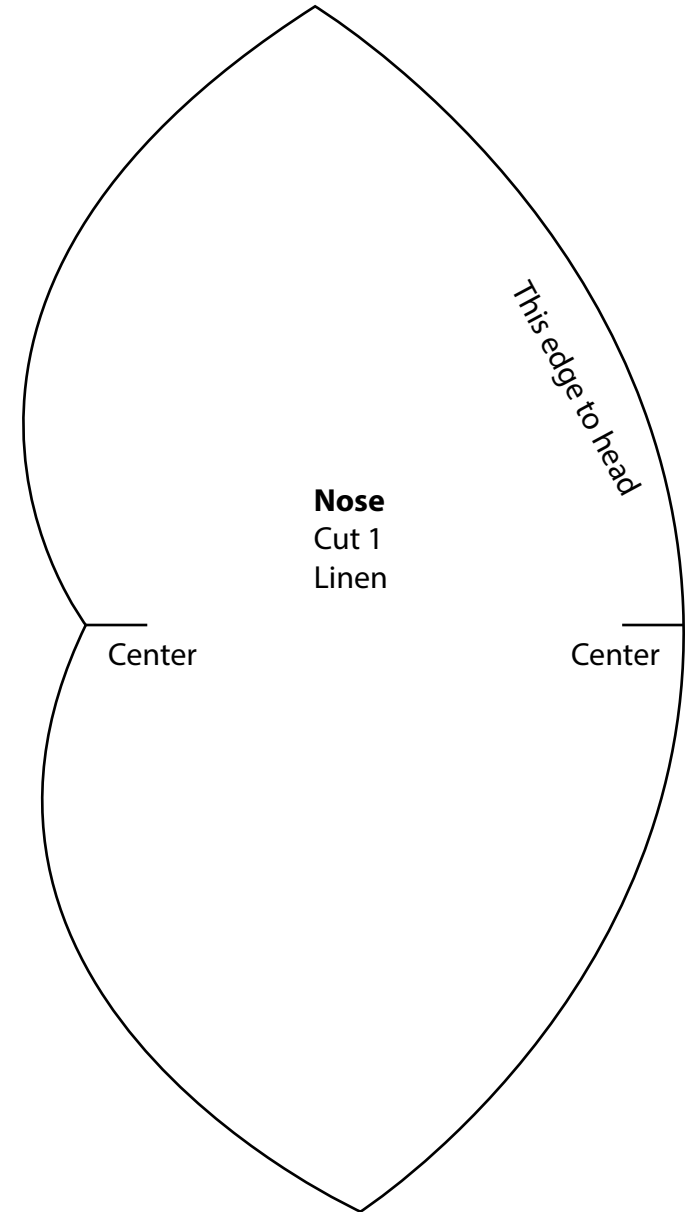
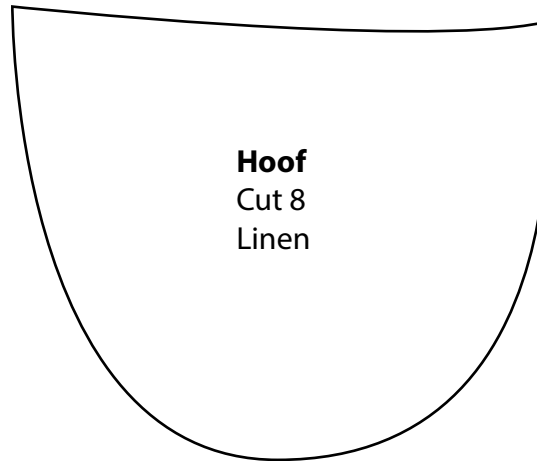
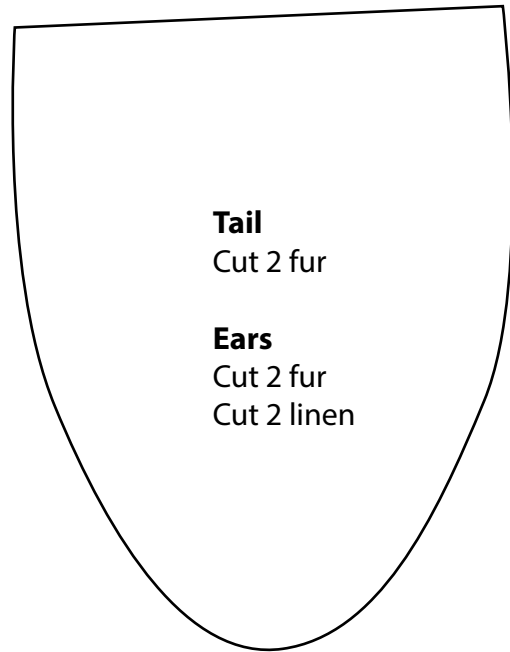
3. Hand-stitch the mini ball fringe under each end, turning under the ends.
4. Hand-stitch the tassel fringe under each end so the tassels extend beyond the ball fringe. Turn under the ends to prevent fraying.
5. Center the blanket on the llama's back and lightly hand-stitch for about 1" (2.54cm) on the front and back center edges.

## **ASSEMBLE THE BRIDLE**

1. Wrap the braid around the upper llama nose and pin to mark the length. Overlap the ends and stitch together, but do not trim the extra length.
2. Using the free end of the braid wrap the joining to hide it and hand-stitch. Make a 16" (40.64cm) loop for the rein, trim the braid length and tuck the raw edge under the wrapped area. Hand-stitch in place.
3. Set the bridle on the llama and lightly hand-stitch it around the nose area.

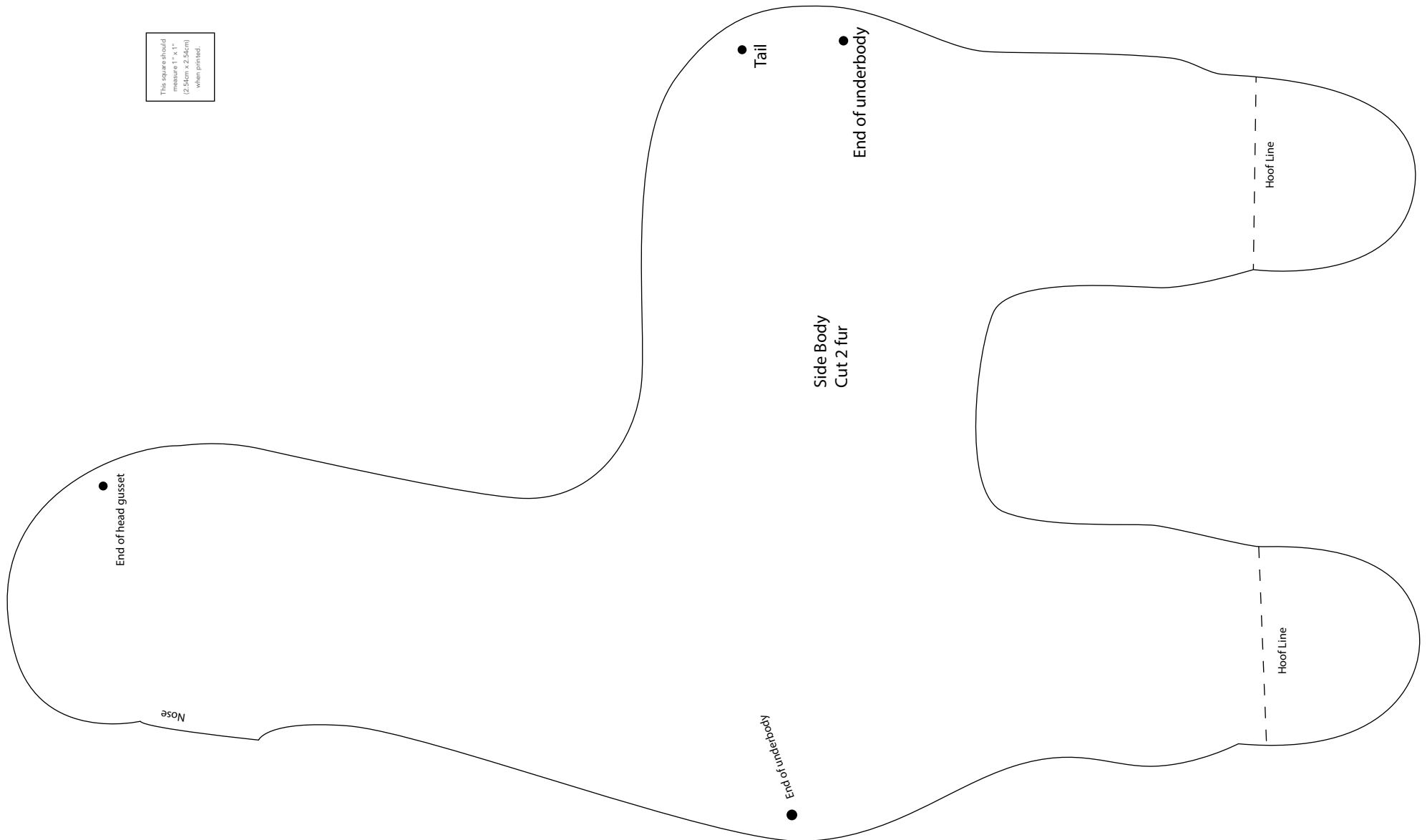
4. Sew three jingle bells to each side of the rein starting about 2" (5.08cm) from the wrapped area and spaced about 1" (2.54cm) apart.





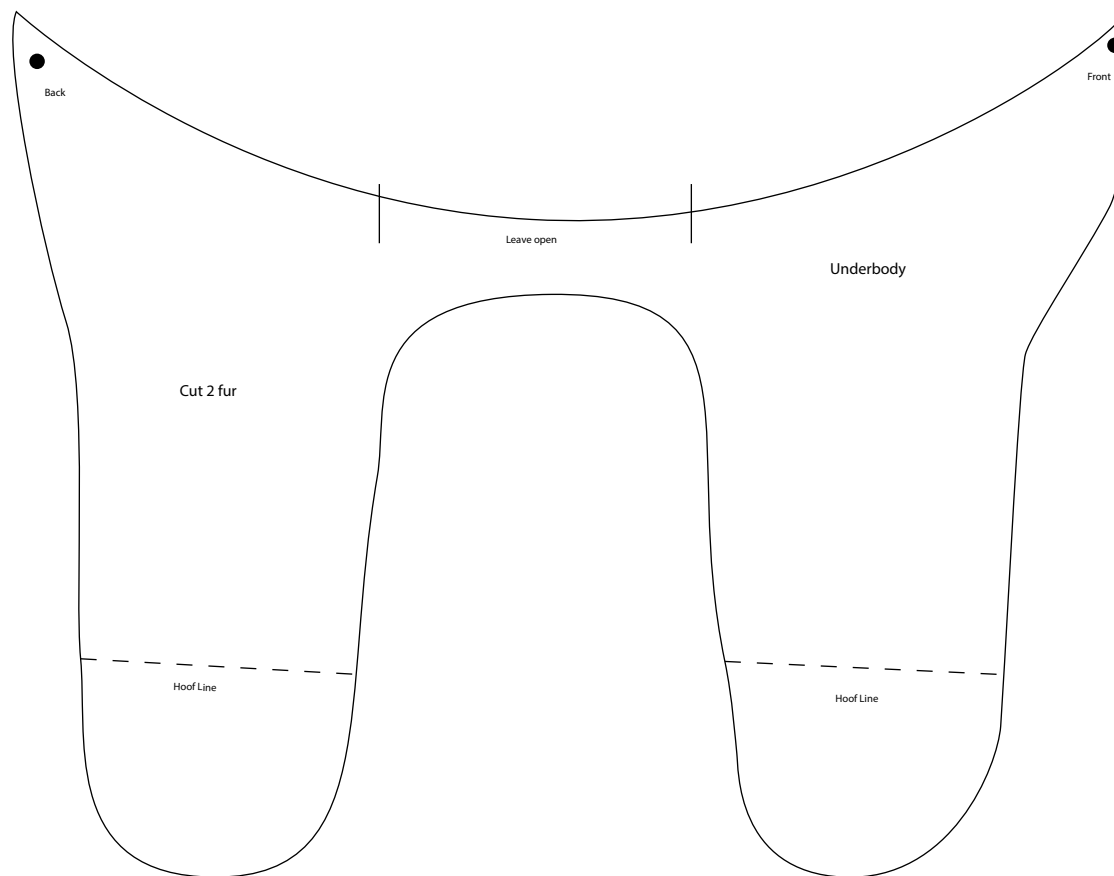
This square should measure 1" x 1" (2.54cm x 2.54cm) when printed.

\*\*\* Measure templates before cutting to confirm printing at 100%\*\*\*



\*\*\* Measure templates before cutting to confirm printing at 200%\*\*\*

This square should  
measure 1" x 1"  
(2.54cm x 2.54cm)  
when printed.



**\*\*\* Measure templates before cutting to confirm printing at 200%\*\*\***