



Technique:	Sewing, Appliqué
Designed By:	Linda Turner Griepentrog
Skill Level:	Beginner
Crafting Time:	An evening
Finished size:	16" x 18" (40.64cm x 45.72cm) (excluding handles)

### Featuring Coats Dual Duty XP®

Whether you're on the trick-or-treat hunt for some delectable sweets, or just want to embrace the Halloween spirit with this soft-sided tote, the big orange face is sure to garner a few giggles.

### Supplies

- **Coats Dual Duty XP® All-purpose Threads**
- ⅓ yd (60.96cm) orange fabric
- ⅓ yd (60.96cm) black dot lining/face fabric
- ⅓ yd (30.48cm) green handle fabric
- 1½ yds (1.49m) medium-weight fusible interfacing, 20" (50.80cm)
- Paper-back fusible web

## Cutting

### WOF = Width of Fabric

**Note:** Bag body needs to be printed at 200%.

### From orange fabric, cut:

(2) bag body

### From black dot, cut:

(2) bag body

(2) eyes

(1) mouth

### From green fabric, cut:

(2) strips, 4½" x 38" (11.43cm x 96.52cm)

### From fusible interfacing, cut:

(2) bag body

(4) 4½" x WOF (11.43cm x WOF) strips

**Note:** Seam allowances are ½" (1.27cm) unless otherwise noted.

## Preparation

1. Fuse an interfacing piece to the wrong side of each orange bag body. Abutting ends, fuse interfacing to the wrong side of the green handle pieces.
2. Trace two eyes and one mouth onto the paper side of the fusible web. Following the manufacturer's instructions, fuse these to the wrong side of the black dot fabric. Cut out on the marked lines.

## Assemble the Bag Front and Back

1. Fuse the eyes and mouth to the bag body front in the desired position.
2. Using a narrow zigzag, sew around the appliqué shapes.
3. Sew the front lower corner darts and press the darts to the center.
4. Sew the back lower corner darts and press outward.
5. With right sides together, sew the bag body front and back together along the sides and lower edge. Turn right side out.

## Assemble the Bag Lining

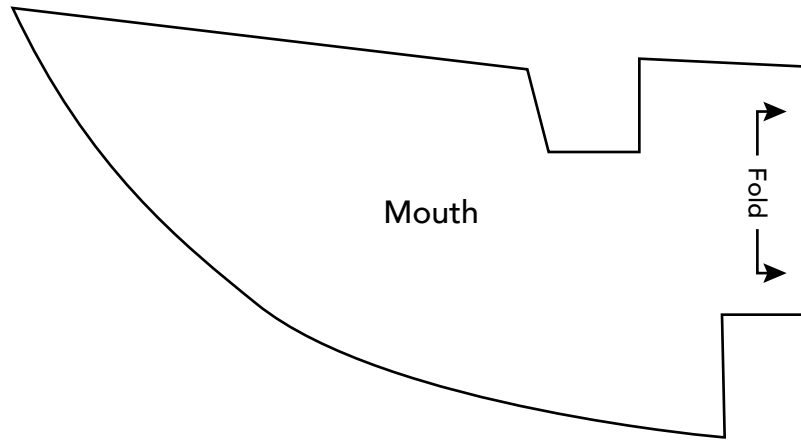
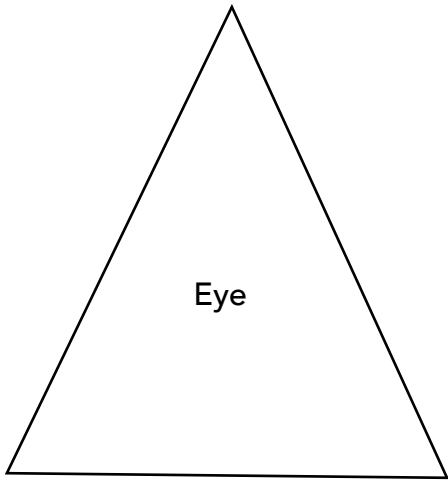
1. Sew the darts in the bag body lining front and back, pressing opposite directions as for the bag.
2. With right sides together, sew the bag lining front and back together along the sides and lower edge using a ¾" (68.58cm) seam and leaving a 3" (7.62cm) opening at the bottom for turning.

## Assemble the Bag

1. With right sides together, slip the lining over the bag, matching upper edges and side seams.
2. Sew around the bag upper edge. Trim the seam, clip the curves and corners.
3. Turn the bag right side out through the lining opening. Sew the opening closed by hand or machine.
4. Push the lining into the tote and firmly press the upper bag edges.

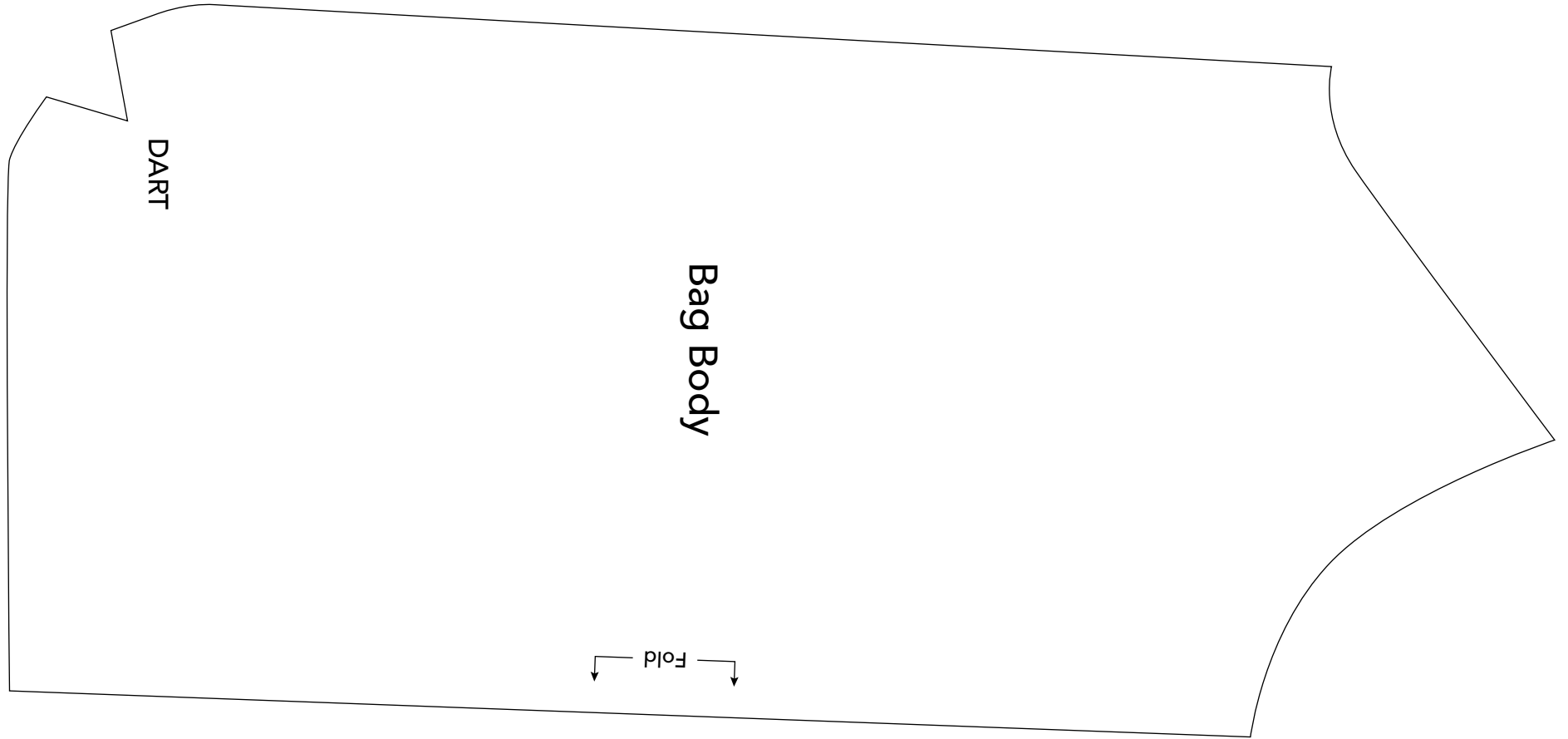
## Assemble the Handles

1. Fold each handle strip right sides together, matching the long edges.
2. Using a ¼" (.64cm) seam, sew each handle along both ends and the long edges, leaving an opening near the center of a long edge.
3. Clip the corners and turn the handles right side out. Poke out the corners to square. Press, turning under the opening edges.
4. Edgestitch the handles.
5. Tie a loose knot in the handle about 3" (7.62cm) from each short end.
6. Pin the handle to the bag front and back points, being careful not to twist, and sew across the handle width above the knot. Push the knot up to the stitching line.



This square should  
measure 1" x 1"  
(2.54cm x 2.54cm)  
when printed.

\*\*\* Measure templates before cutting to confirm printing at 100%\*\*\*



This square should  
measure 1" x 1"  
(2.54cm x 2.54cm)  
when printed.

\*\*\* Measure templates before cutting to confirm printing at 200%\*\*\*