



Technique:	Sewing
Designed By:	Karen Schaphorst
Skill Level:	Experienced Beginner
Crafting Time:	An evening
Finished size:	5" x 8" (12.70cm) x 20.32cm; 7" x 10" 17.78cm x 25.40cm; 8" x 12½" (20.32cm x 31.75cm) (height x width)

**Featuring
Soft Repose by Shell Rummel,
Coats® Polyester Zippers,
Dual Duty XP® thread**

One can never have too many zippered pouches—they're great for stowing everything from sewing supplies to travel cosmetics. These softies stack inside the largest for easy storage when not in use.

Fabric required

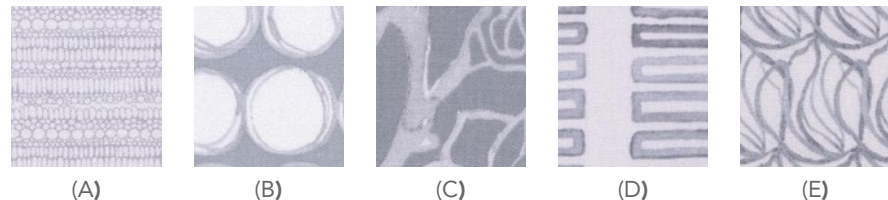
DESIGN	ARTICLE CODE	YARDAGE
<i>Coats® Soft Repose fabrics by Shell Rummel</i>		
(A) Pebble <i>for upper bag on all sizes</i>	PWSR006.8GREY	½ yd (45.72cm)
(B) Touchstone <i>for accent on small bag</i>	PWSR005.8GREY	⅔ yd (34.29cm)
(C) Steel Magnolia <i>for accent on medium bag</i>	PWSR002.8GREY	½ yd (45.72cm)
(D) Tranquility <i>for accent on large bag</i>	PWSR003.8GREY	½ yd (45.72cm)
(E) Infinite Beauty <i>for lining on all bags</i>	PWSR004.8GREY	⅔ yd (60.96cm)

Supplies

- Coats Dual Duty XP® All-purpose thread
- Coats® 7", 9", and 12" zipper- one each
- 1¼ yd (114.30cm) fusible fleece

Additional Requirements

- Sewing machine
- Basic sewing and pressing supplies
- Zipper foot
- Paper for pattern



Cutting

When cutting multiple shapes from a single fabric, draw them onto the cloth prior to cutting for best use of the fabric.

From Fabric A, cut:

(1) square each of the following sizes:
12" (30.48cm), 13" (33.02cm), and 16" (40.64cm) (S-L)

From Fabric B, cut:

(1) square, 12" (30.48cm)

From Fabric C, cut:

(1) square, 13" (33.02cm)

From Fabric D, cut:

(1) square, 16" (40.64cm)

From Fabric E, cut:

(2) rectangles each of the following sizes:
8½" x 7" (21.59cm x 17.78cm), 9" x 10½" (22.86cm x 26.67cm), and 10¼" x 12½" (26.04cm x 31.75cm) (S-L)

From fusible fleece, cut:

(2) squares each of the following sizes:
12" (30.48cm), 13" (33.02cm), and 16" (40.64cm)

Preparing the Bag Patterns

All seam allowances are ¼" (.64cm) and pieces are sewn right sides together.

1. Cut paper rectangles in the following sizes for the bag front/back:
8½" x 7" (21.59cm x 17.78cm)
9" x 10½" (22.86cm x 26.67cm)
10¼" x 12½" (26.04cm x 31.75cm) (S-L)

Assembling the Bag Front and Back Design Area

Note that the pieced base squares are made oversized to allow you the choice of seam line design placement on each bag front and back.

2. With the fabric design placed horizontally, draw a diagonal line from the upper left to lower right on the wrong side of each **Fabric A** square.
3. Place an accent square (**Fabric B, C, and D**) right sides together with the marked **Fabric A** square of the same size and stitch ¼" (.64cm) on each side of the line. Cut the pieces apart on the line and press open the two units, pressing the seam toward the accent fabric.
4. Following the manufacturer's instructions, fuse each pieced square to a same-size piece of fleece.
5. Place the bag pattern piece on each square, noting the accent placement for each size. Move the pattern on the square to position the diagonal seam as desired. Cut a front and back rectangle for each bag size.

Inserting the Zipper

6. Pair up the appropriate length zipper with each set of bag pieces, with the
7" (17.78cm) for the small bag
9" (22.86cm) for the medium bag
12" (30.48cm) for the larger bag
7. Open the zipper and center it along the upper bag front **Fabric A** edge with the right side of the zipper against the fabric right side.
8. Stitch the zipper in place ¼" (.64cm) from the teeth. Repeat for the opposite zipper side with the bag back.
9. Place the appropriate size **Fabric E** lining rectangle right sides together matching the edge to the zipper edge, and sandwiching the zipper between the layers. Stitch along the previous stitching line. Repeat for the second side. Press both layers away from the zipper.
10. Place the two lining pieces right sides together, and the front and back pieces right sides together. (The zipper will be folded at the upper edge and should be partially open.)
11. Stitch around the bag sides and bottom and the lining sides and bottom, leaving a 3" opening in the bottom of the lining for turning.
12. With the pieces still right sides together, box the lower corners of both the outer bag and the lining. Align the side seam with the bag bottom seam forming a triangle at each corner. Draw a line perpendicular to the seams in the following lengths:
Small - 2½" (6.35cm)
Medium - 3" (7.62cm)
Large - 3 ½" (8.89cm).
Stitch on the lines and trim the excess fabric.
13. Turn the bag right side out through the lining opening. Hand-stitch the lining opening closed. Push the lining into the bag, push out the corners, and press to shape.