



MATERIALS

Coats & Clark™ Dual Duty® All-purpose thread

Coats & Clark™ Machine Embroidery thread

Coats & Clark™ Bobbin® thread

1 Anchor® Embroidery Floss on Spools, 0045 or other red shade

½ yard (.5m) of white on white fabric for stocking

⅛ yard (.1m) each or scraps for snowman: Gold for feet, red for hat, tone on tone white, light gray and black for penguin and black for eyes.

¼ yard (.25m) black/white print for stocking cuff

1 pkg. Maxi Piping

7" (18cm) of ½" (1cm) ribbon

½ yard (.5m) Tear-A-Way stabilizer

¼ yard (.25m) Paper backed fusible web

½ yard (.5m) Pattern making fabric

Susan Bates® Luxite Crochet Hook, US B/1(2.25mm)

Zipper or piping foot

Pinking shears



SEWING | SKILL LEVEL: INTERMEDIATE

Featuring Coats & Clark™ Dual Duty® All-purpose thread

This little penguin looks like he is having fun in the snow and you will have fun making this stocking. Shiny Coats & Clark™ Machine Embroidery thread gives some "luxe" to the stitching. Add dimension with a scarf crocheted from Anchor® Embroidery Floss.

MEASUREMENTS

10" x 13" (25cm x 33cm)

PREP

Stocking pattern on page 4

1. Print the pattern pieces and trace onto pattern making fabric.
2. Cut out the stocking pieces and tape them together to create one piece.

CUTTING

From stocking fabric:

4 stockings: with the fabric folded as it is on the bolt, fold one additional time then pin on the pattern piece. This gives you two facing to the right and two facing to the left. One set will be used for the outer stocking and the other pair will be used for the lining.

From black/white print for stocking cuff:

(2) strips 6" x 15" (15cm x 38cm) for cuff

MAKE THE PENGUIN

Penguin pattern on page 5-6

1. Trace the penguin pattern pieces onto the smooth paper side of the paper-backed fusible web.
2. Mark the color of each group of pieces that they are to be cut from.
3. Cut apart each color group as indicated by the square/rectangles.
4. Fuse the pieces onto the wrong side of the appropriate colors following the manufacturer's instructions.
5. Cut out the penguin pieces.

- Remove the paper backing and fuse the pieces in place on the stocking following the illustration on the pattern page. The top of the penguin's head should be 4" (10cm) down from the top of the stocking.

Note: For the scarf, two options are given- appliqué or crocheted. If you plan to crochet the scarf, **do not** use the scarf appliqué piece.

APPLIQUÉ

- Thread the machine with Coats & Clark™ Machine Embroidery thread on top and Coats & Clark™ bobbin thread in the bobbin.
- Select a zig zag or satin stitch on the machine, width 3, length .5. Set up a test piece of fabric with Tear-A-Way stabilizer underneath the fabric. Stitch a sample stitch. It should lay flat, with the threads lying next to one another. It should not bunch up, but should feed smoothly by itself.

- After you are satisfied with the stitch, place Tear-A-Way stabilizer underneath the fabric and appliqué the penguin in place.

SCARF

- Pull off 3-4 feet (91m – 1.21m) of thread from the Anchor® Floss. Wrap around a 1" (2.5cm) piece of cardboard. Tie in the center to make a tassel. Cut the loops and trim to a circular shape.
- Pull the tie ends through the fabric and tie the tassel in place on the top of the hat.
- Using the remaining floss, crochet a scarf. Begin by chaining 25 stitches. Single crochet back into the 25 stitches to create the first row. Single crochet back along the stitches to create row two. Cut, leaving a 10" (25cm) long tail. Weave the tail back through the scarf so both thread ends are at the same end of the scarf.
- Repeat with another chain of 15 stitches for the other end of the scarf.

- Place the scarf on the penguin and pin in place. Pull the floss ends through to the wrong side of the fabric and tie off. Stitch the scarf to the penguin by hand using Coats & Clark™ Dual Duty® All-purpose thread.



ASSEMBLE STOCKING

- Thread the machine with Coats & Clark™ Dual Duty® All-purpose thread.
- Use a zipper foot or piping foot and stitch the piping around the appliqué stocking front as shown.



- Snip into the seam allowance on the curves as shown, to allow the fabric to lay flat.



4. Place the piped stocking front right sides together with one of the other stocking pieces.
5. With the zipper foot or piping foot still in place, stitch around the stocking.
6. Turn and press.



7. Remove the zipper foot or piping foot and replace with the regular presser foot.
8. Place the remaining two stocking pieces right sides together for the lining and pin.
9. Stitch around the stocking aligning the edge of the presser foot with the edge of the fabric.

10. Trim the seam with pinking shears.
11. Insert the lining inside the outer stocking wrong sides together. Stitch around the top of the stocking near the edge.
12. Snap on the piping foot or zipper foot.
13. Stitch piping along one long edge of one of the cuff pieces.



14. Place right sides together with the other rectangle.
15. Stitch the two pieces together with the piping between the layers.



16. Fold so that the two short edges are matched and pin.



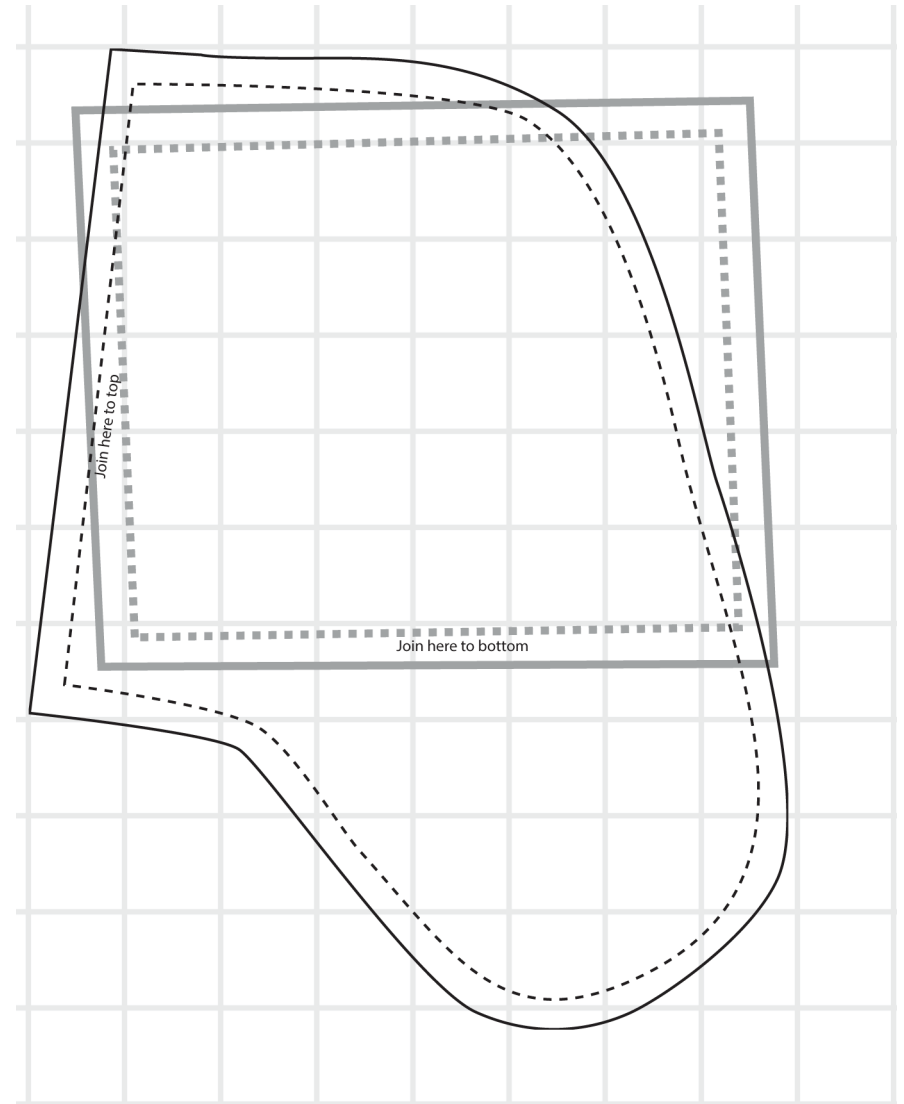
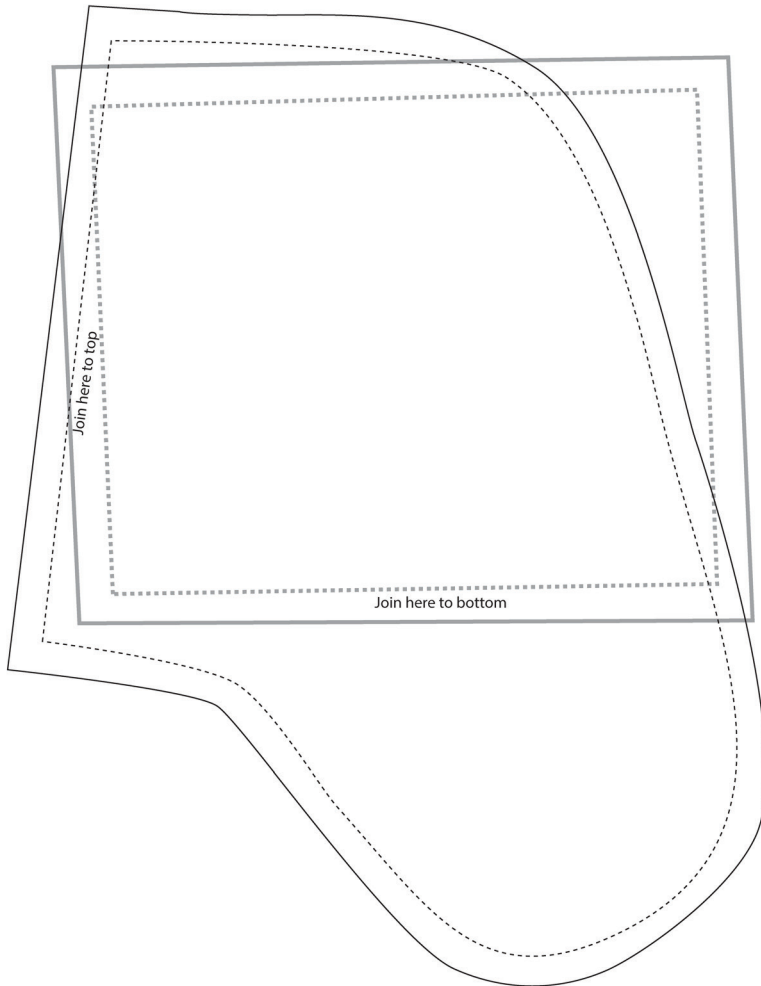
17. Snap on the regular foot.
18. Stitch using a 1/2" (1cm) seam allowance.
19. Fold with the wrong sides together. Insert into the stocking and pin the top edges together.
20. Stitch the two together.

21. Finish the raw edge either on the serger or with an overcast stitch.



22. Fold the cuff to the right side.
23. Fold the ribbon in half and tuck the ends under.
24. Stitch to the top of the stocking as shown.

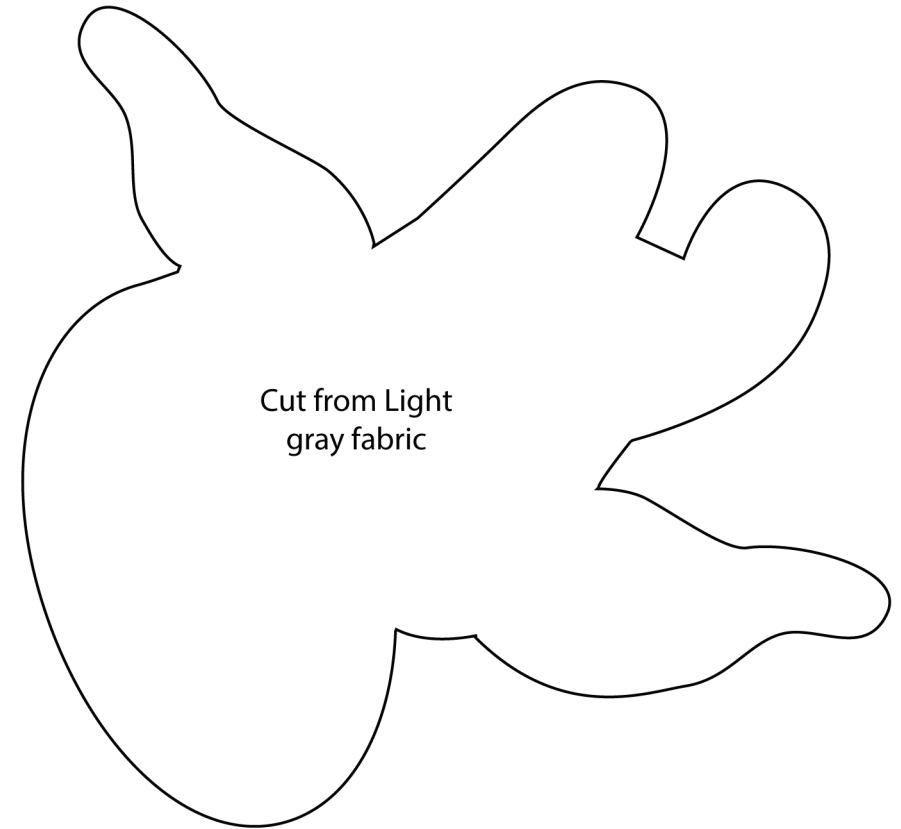
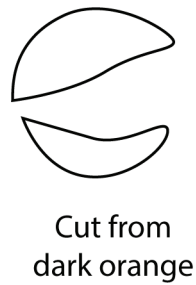
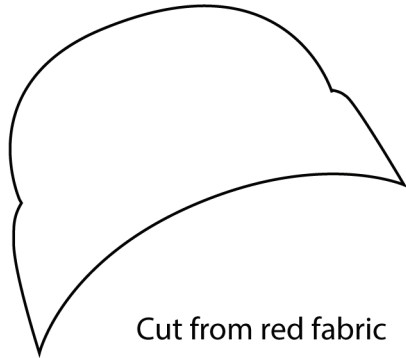




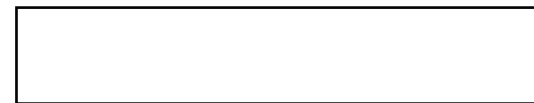
1 square =
1 inch

This square should
measure 1" x 1"
(2.54cm x 2.54cm)
when printed.

***** Measure templates before cutting to confirm printing at 200%*****

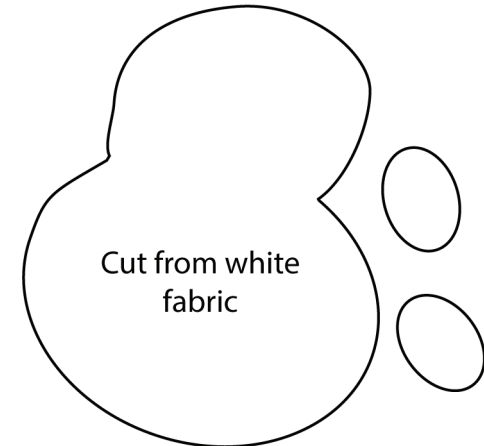
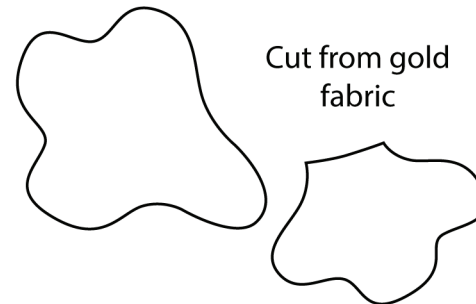
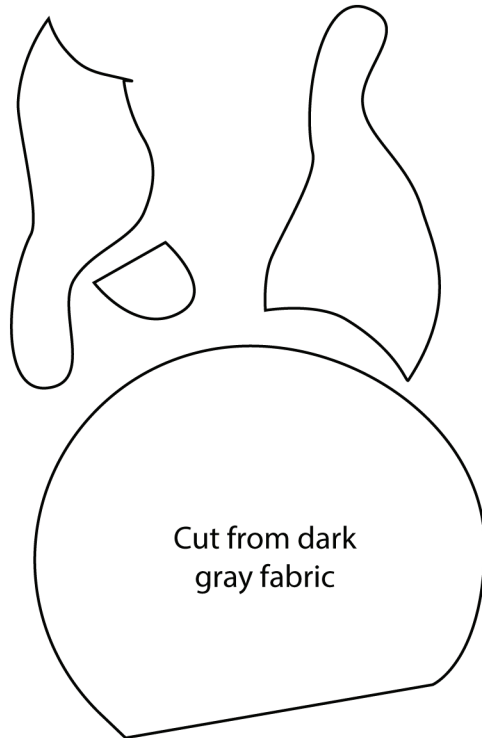


This square should measure 1" x 1" (2.54cm x 2.54cm) when printed.



Alternative scarf pattern

*** Measure templates before cutting to confirm printing at 100%***



This square should measure 1" x 1" (2.54cm x 2.54cm) when printed.

***** Measure templates before cutting to confirm printing at 100%*****