



MATERIALS

Coats & Clark™ Dual Duty XP™ All-Purpose Thread, red (2250)

¼ yd (22.86cm) green felt
¼ yd (22.86cm) double-sided fusible stiff craft interfacing
Six pre-made ribbon bows, 1" (2.54cm)
Star button, 1" (2.54cm)
Paper-backed fusible web
Craft glue
Removable marker
Non-stick pressing sheet

 SEWING, FABRIC CRAFTING | SKILL LEVEL: EASY

Featuring Coats & Clark™ Dual Duty XP™ All-Purpose Thread

Whether you're showing off your new puppy or your kids' latest visit with Santa, this fun holiday frame is sure to please.

MEASUREMENTS

7½" x 8" (19.05cm x 20.32cm);
photo opening: 2½" (6.35cm)
square

CUTTING

From the green felt, cut:

(2) rectangles, 9" x 12" (22.86cm x 30.48cm)
(1) square, 3½" (8.89cm)

From the stiff interfacing, cut:

(1) tree shape, using the pattern provided; cut out center
(2) stand shapes, using the pattern created below

Stand Pattern: Draw at 3" x 6" (7.62cm x 15.24cm) rectangle on paper. Make a mark ½" (1.27cm) in from each long edge at the top end. Using a ruler, connect the marks to the lower corners and trim. The narrower portion is the top of the photo frame stand.

ASSEMBLING THE FRAME

FRONT

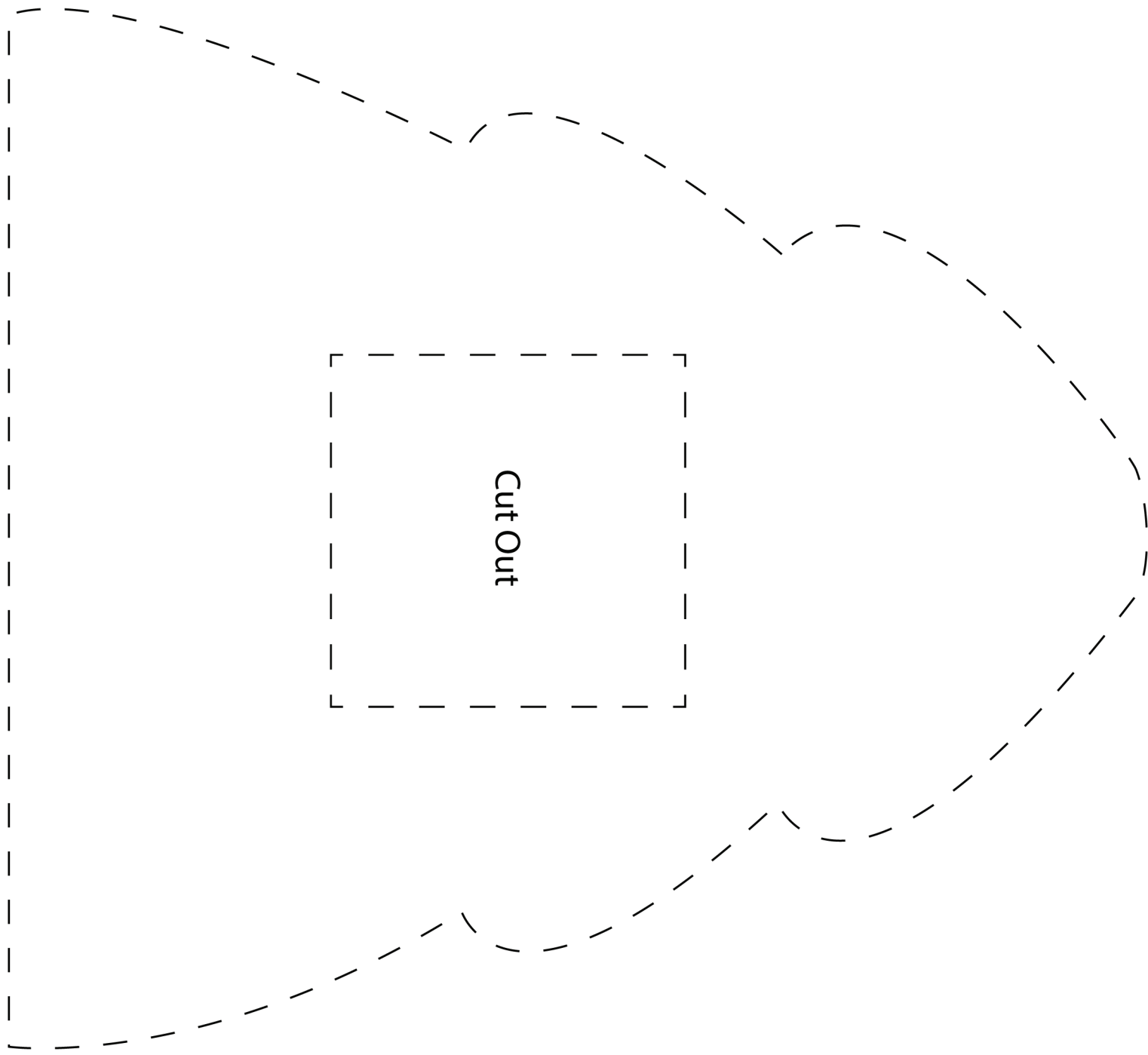
1. Position the interfacing tree and fusible web between the two felt rectangles and follow the manufacturer's instructions to fuse securely.
2. Using either the tree pattern or the imprint of the tree shape after pressing, trim the outer edges of the tree shape a scant ⅛" (.32cm) from the interfacing edge. Carefully trim out the center opening in the same manner.
3. Using red thread, stitch around the outer tree shape and the center opening.
4. Hand-stitch the button in place at the top of the tree.
5. Hand-stitch or glue the bows in place as desired on the tree front.

6. Apply glue close the edge of the felt square on three sides only. With the unglued edge facing the top of the tree, center the square over the opening and press in place. Allow the glue to dry.
7. Insert your photo into the pocket and position as desired.

ASSEMBLING THE FRAME STAND

1. In the same manner as you covered the frame interfacing, do the same for the stand, fusing together the two interfacing layers for the center and felt on both sides. Stitch around the perimeter, $\frac{1}{8}$ " (.32cm) from the edges.
2. Decide the angle that you want the frame to sit on the table and position the stand on the back to support it.
3. Glue the top $\frac{1}{4}$ " (.64cm) of the stand shape (the narrow end), center on the frame back and pin in place. Allow the glue to dry.





This square should measure 1" x 1" (2.54cm x 2.54cm) when printed.

***** Measure templates before cutting to confirm printing at 100%*****