



## MATERIALS

**Coats & Clark™ Dual Duty XP® All-purpose Thread**

**Coats & Clark™ Button & Craft Thread**

½ yd (46cm) screen, plastic coated

½ yd (46cm) mottled gray fabric

⅛ yd (11cm) mottled red fabric

⅛ yd (11cm) white-on-white print fabric

½ yd (46cm) single-sided fusible foam

⅔ yd (61cm) webbing, 1" (2.5cm)

One googly eye, 1½" (4cm), sew-on or glue-on

Craft glue (optional)

Removable marker

Point turner

Large-eye hand sewing needle

Pattern tracing cloth

 SEWING | SKILL LEVEL: EASY

**Featuring Coats & Clark™ Dual Duty XP® & Coats & Clark™ Button & Craft thread**

Whether your kids love Shark Week or Baby Shark, they will love carrying this tote to the beach. Water and sand fall through the screen tote, and the big, snarky shark will protect what's inside! Add features with a few running stitches using Coats & Clark™ Button & Craft thread.

## MEASUREMENTS

14" x 18" (35.5cm x 46cm) (overall)

## PREPARATION

1. Print pattern pieces on pages 3-4 200%.
2. Trace the shark pattern pieces onto pattern tracing cloth and cut out. Transfer all markings.
3. To make the tote body pattern, draw a rectangle 14½" (37cm) tall and 10" (25cm) wide. From the lower right corner, cut out a 2" (5cm) square. The 14½" (37cm) edge is the tote center and needs to be cut on the fold of the screen.

## CUTTING

**From the screen, cut:**

(2) tote body

**From the gray fabric, cut:**

(2) shark body

(2) top fin

(2) bottom fin

**From the red fabric, cut:**

(1) mouth

**From the white fabric, cut:**

(6) squares, 1 ¾" (4cm)

**From the foam, cut:**

(1) shark body

(1) top fin

(1) bottom fin

*Seam allowances are ¼" (1cm).*



## **ASSEMBLING THE SHARK FRONT**

1. Transfer the fin and mouth markings to the shark body front.
2. To prepare the fins, follow the manufacturer's instructions to fuse the foam section to a corresponding fabric section wrong side. Repeat for the remaining fin.
3. Place one foam-backed fin right sides together with the same size fabric fin. Sew around the edges, leaving the bottom of the top fin, and the top of the bottom fin open. Trim the seam allowances and carefully clip the corners. Turn the fins right side out and press. Edgestitch all edges. Set aside.
4. To make the teeth, fold the white square in half and press. Fold each end to the center at a 45° angle, so that the folds exactly meet in the center. Press. Repeat for all the teeth.
5. With the raw edge of the teeth along the marked mouth line and the teeth facing away from the mouth opening, slightly overlap the teeth as needed

- to fit, and pin in place. Stitch in place a scant 1/8" (.5cm) from the raw teeth edges.
6. Trim away the gray fabric within the mouth area, leaving a 1/4" (1cm) seam allowance. Press under the mouth opening edges. Slide the red fabric mouth section under the opening aligning the lower edges with the shark body. Pin in place.
7. Fuse the shark front body to the foam body, removing the pins around the mouth area. Do not fuse over pins. Edgestitch the mouth opening through all layers.
8. With raw edges matching, baste the top and bottom fin in place between the marking dots. Note that the flat edge of the top fin faces the back.

## **FINISHING THE SHARK**

1. Place the shark front and back right sides together, matching the cut edges. Sew around the perimeter, leaving a 4" (10cm) opening in the lower back for turning. Trim the seam allowances, clip the corners and

- curves, and turn the shark right side out. Gently poke out the corners. Press.
2. Hand-stitch the opening closed, then edgestitch the shark body, excluding the mouth area, with the fins extended.
3. Glue or sew on the googly eye. Let glue dry thoroughly before handling.
4. Using Button and Craft thread, hand-sew big stitches to outline the mouth, eye and to sew gills on the lower body.

## **ASSEMBLING THE TOTE**

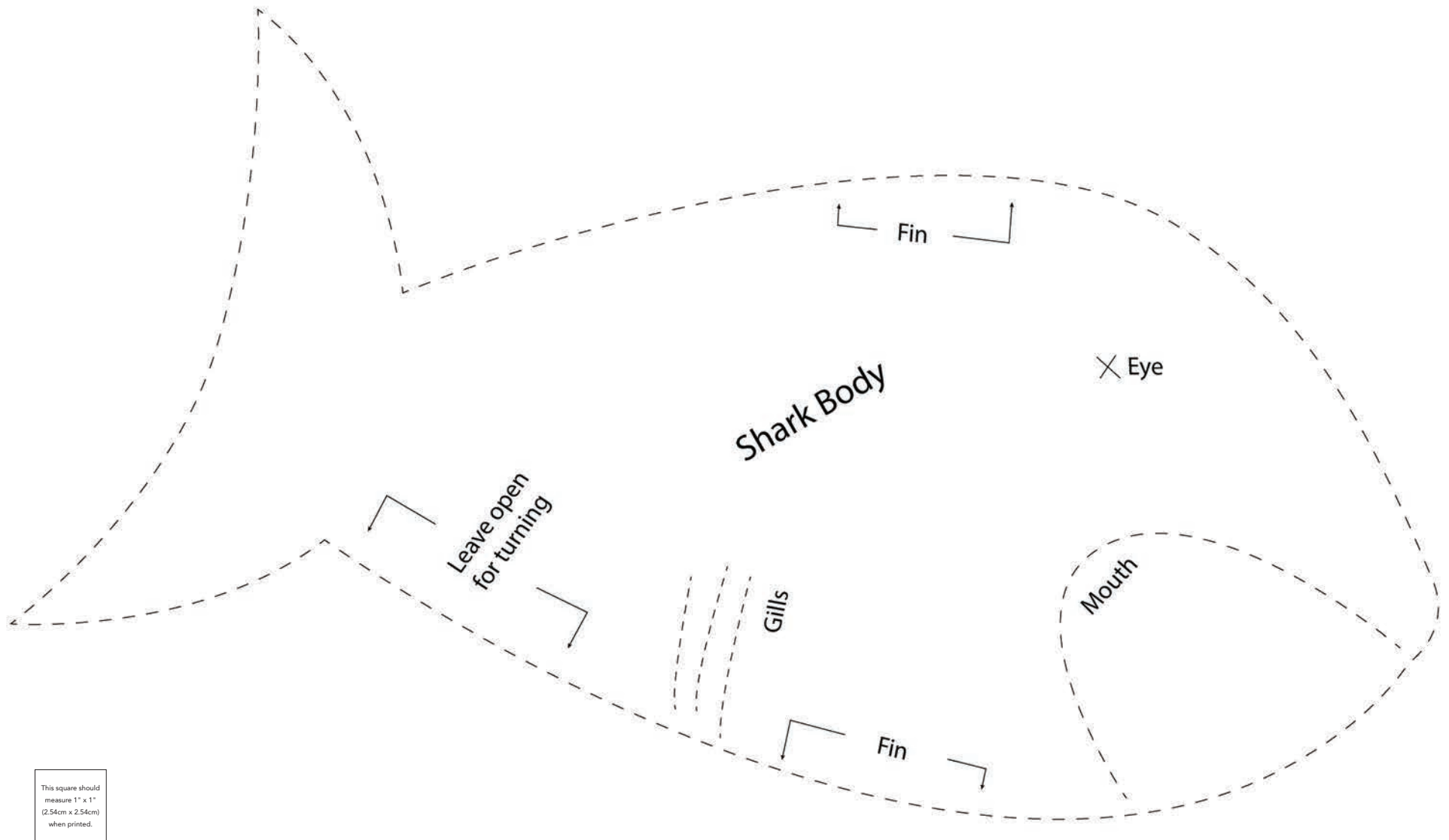
**Note: Do not** press the screen with an iron as it may melt. The tote has 1/2" (1cm) seams.

1. Place the tote front and back body pieces right sides together. Sew the bottom seam. Finger-press the seam open and topstitch on both sides of the seam.
2. Sew the side seams together. To box the corners, fold the side seam on top of the bottom seam and sew across the straight edge. Repeat for the second corner.

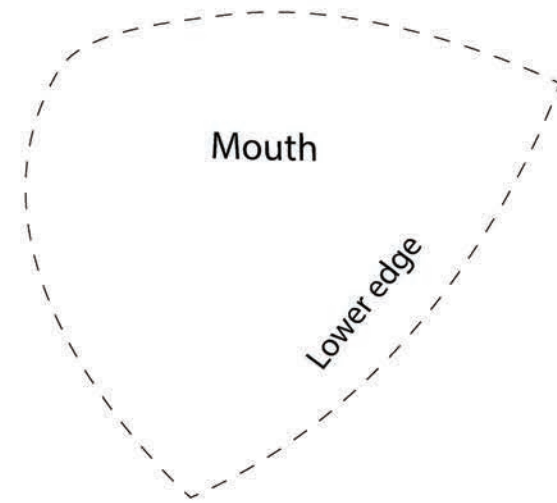
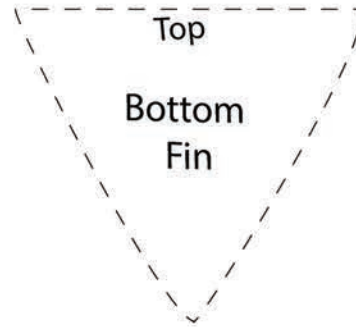
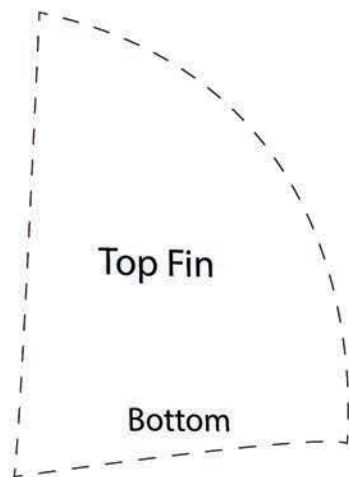
3. Turn the tote right side out and finger-press a 1 1/2" (4cm) hem at the upper edge. Sew around the top edge 1" (2.5cm) from the fold.
4. Cut the webbing in half and zigzag (or sear) the ends to prevent fraying. Mark the upper tote center on both the front and back.
5. Position the webbing 3" (8cm) from each side of the center marking and 1 1/2" (4cm) below the upper fold. Pin the opposite side in place, being careful not to twist, then repeat for the second side of the tote.
6. Stitch a box around the webbing edges within the hem area.

## **FINISHING THE TOTE**

1. Finger-press the tote corners to crease.
2. Position the wrong side of the shark as desired on the tote front and pin in place.
3. Using Coats & Clark™ Button & Craft thread and working from the tote inside, hand-stitch the shark in place, noting that you won't be stitching all the way to the edges as the fins and tail overhang the tote front shape.



**\*\*\* Measure templates before cutting to confirm printing at 200%\*\*\***



This square should  
measure 1" x 1"  
(2.54cm x 2.54cm)  
when printed.

**\*\*\* Measure templates before cutting to confirm printing at 200%\*\*\***