



MATERIALS

Coats & Clark Surelock Serging Thread in a contrasting color
Coats & Clark Button and Craft thread*

1 Fitted sweater
 3 or 4 colors of sweater fabric
 Buttons *
 Serger/Overlock Sewing Machine
 Pins
 Scissors

*Buttons may or may not be needed depending on the sweater.



SEWING | SKILL LEVEL: **INTERMEDIATE**

Featuring Coats & Clark Surelock Thread

Fashion a patchwork tunic from recycled sweaters for a cute back-to-school look. Give it a deconstructed look by overlocking the seams on the right side of the tunic.

MEASUREMENTS

Girls 5/6 (adaptations given for other sizes)

CUTTING

Prepare the sweater.

1. Measure down from the shoulder seams to bustline - approximately 6 $\frac{3}{4}$ " for a girl's size 5/6 and cut sweater around bustline. Use lower section of sweater to cut 2 bands.
2. Cut 2 bands 2 $\frac{1}{4}$ " x 12 $\frac{3}{4}$ " cross grain for waistband
3. From the other sweater fabrics, cut 12 pieces of various colors using the pattern piece

NOTE: If making a different size take a measurement at the bust on the front and back. Divide this number by 6 and make the

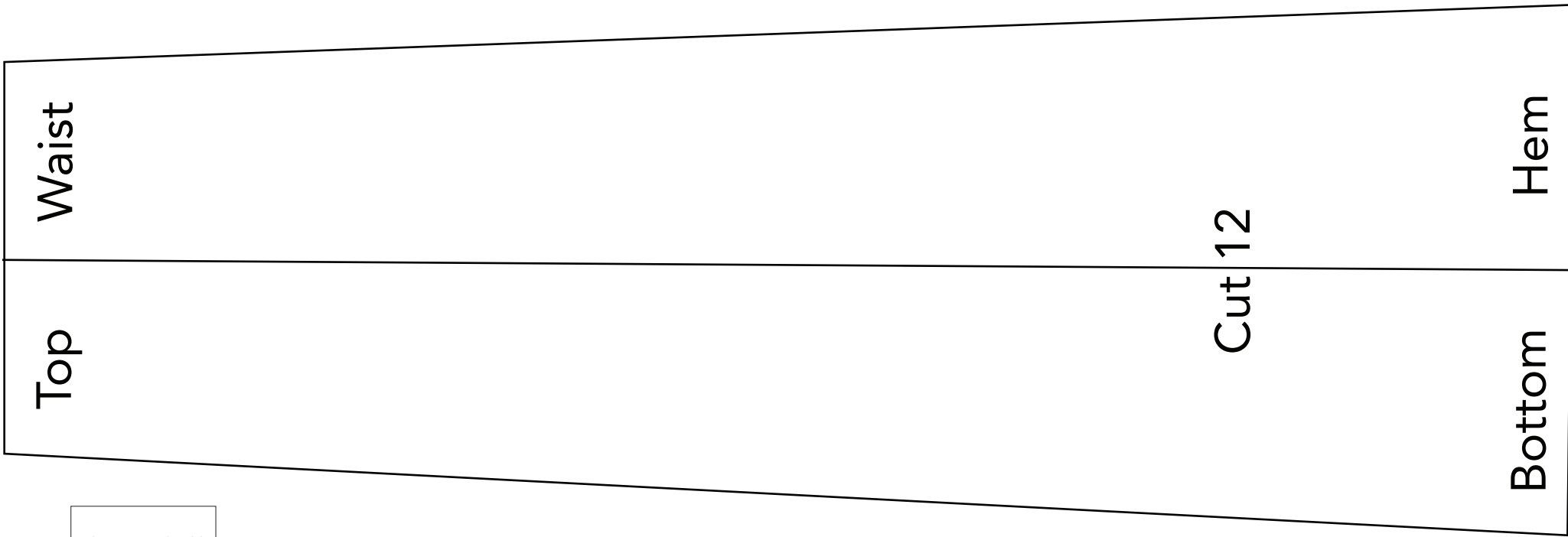
pattern piece this wide at the top + $\frac{3}{8}$ " on each side for seam allowance. For the width of the bottom of the pattern piece add 1 inch or more to the above measurement. To determine length of pattern piece have child try on sweater and measure from bustline down to desired length at hips and subtract 1 $\frac{1}{2}$ " for the band. For the band use the bustline measurement of the sweater divided by 2 x 2 $\frac{1}{4}$ ".

SEWING

4. Skirt: Pin one color sweater fabric to another at sides, wrong sides together and serge - stretching as you sew to make the ruffled lettuce edge effect. Serge all sections together like this all around, forming a tube, sewing the last section to the first.

5. Serge 2 bands together at sides, wrong sides together. Do not stretch these seams.
6. Pin band to top of tube matching side seams with seams from the lower section on each side, wrong sides together and serge around entire band stretching as you sew.
7. Pin top of band to bustline of sweater, wrong sides together and serge around sweater stretching as you sew.
8. Serge around neckline edge and sleeve edge, stretching as you sew.
9. Serge around bottom of sweater to hem stretching as you sew.
10. Thread a hand sewing needle with Button and Craft thread. Sew buttons to tunic.





This square should measure 1" x 1" (2.54cm x 2.54cm) when printed.

*** Measure templates before cutting to confirm printing at 100%***