



Jim Holtz

**ECLECTIC
ELEMENTS**

Featuring Eclectic Elements
Correspondence by Tim Holtz,
Coats® Craft Thread™

Having a place to park your pins helps keeps your sewing room neat—as a pin—as the saying goes. These cute pincushions add style to your decor, as well as practicality.

Collection:	Eclectic Elements Correspondence by Tim Holtz, Coats® Craft Thread™
Technique:	Piecing
Skill Level:	Beginner
Crafting Time:	Evening*
Finished Size:	Strips 'n Stitches (Left cushion): 5¼" (13.34cm) square
	Log Cabin (Right cushion): 5" (12.70cm) square

*Crafting time based on Beginner skill level

Project designed by Richele Christensen

Fabric Requirements - Strips 'n Stitches (Left cushion)

DESIGN	COLOR	ARTICLE CODE	YARDAGE
(A) Graph Paper	Blue	PWTH042.8BLUE	1/8 yard (11.43cm)
(B) In Transit	Red	PWTH046.8REDX	1/8 yard (11.43cm)
(C) Letter	Neutral	PWTH048.8NEUT	1/8 yard (11.43m)
(D) Postal Stripes	Red	PWTH049.8REDX	1/8 yard (11.43cm)
(E) Tiny Stars	Blue	PWTH051.8BLUE	1/8 yard (11.43cm)
(F) Royal Mail	Neutral	PWTH054.8NEUT	1/4 yard (22.86cm)



(A)



(B)



(C)



(D)



(E)

Additional Requirements

- Tim Holtz Eclectic Elements Coats® Cotton Thread
- Tim Holtz Eclectic Elements Craft Thread (6-weight)
- Polyester fiberfill or ground walnut filler
- Sewing machine Rotary cutter/mat/ruler Large-eye hand sewing needle
- Basic sewing supplies



(F)

Fabric Requirements - Log Cabin (Right cushion)

Fussy-cut one of the stamp prints for the center of this easy-to-make log cabin pincushion, then frame it with other fabrics in the collection.

DESIGN	COLOR	ARTICLE CODE	YARDAGE
(A) Royal Mail	Neutral	PWTH054.8NEUT	1/4 yard (22.86cm)
(B) Letter	Neutral	PWTH048.8NEUT	1/8 yard (11.43cm)
(C) Model Airplanes	Blue	PWTH050.8BLUE	1/8 yard (11.43cm)
(D) Graph Paper	Red	PWTH042.8REDX	1/8 yard (11.43cm)
(E) Tiny Stars	Blue	PWTH051.8BLUE	1/8 yard (11.43cm)
(F) Postal Stripes	Red	PWTH049.8REDX	1/8 yard (11.43cm)



(A)



(B)



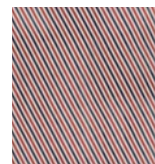
(C)



(D)



(E)



(F)

Additional Requirements

- Same as previous.

Strips 'n Stitches (Left cushion)

Cutting

Fabrics A-F, cut:

(1) 1 $\frac{3}{8}$ " x 6" (3.49cm x 15.24cm) strip

Fabric F, cut:

(1) 5 $\frac{3}{4}$ " (14.61cm) square

Sewing

Note: Seam allowance is a scant $\frac{1}{4}$ " (.64cm) and all seams are sewn right sides together.

1. Sew the long edges of the (6) 1 $\frac{3}{8}$ " x 6" (3.49cm x 15.24cm) **Fabrics A-F** strips together in a pleasing arrangement to make the pincushion front. Press the seam allowances to one side.
2. Trim the sewn piece to 5 $\frac{3}{4}$ " (14.61cm) square.
3. Add decorative hand stitching accents with Coats Craft Thread near the seam lines as desired.
4. Sew the front and the 5 $\frac{3}{4}$ " (14.61cm) **Fabric F** backing square together leaving a small opening for turning.

Finishing

5. Trim corners to reduce bulk and turn the pincushion right side out.
6. Fill with stuffing to the desired firmness and hand-stitch the opening closed.

Log Cabin (Right cushion)

Cutting

Fabric A, cut:

(1) 3" x 2 $\frac{1}{2}$ " (7.62 x 6.35cm) piece 1, centered on the stamp motifs

(1) 4 $\frac{3}{4}$ " x 1 $\frac{1}{2}$ " (12.07cm x 3.81cm) piece 6

(1) 5 $\frac{1}{2}$ " (13.97cm) square for backing

Fabric B, cut:

(1) 3" x 1 $\frac{1}{2}$ " (7.62cm x 3.81cm) piece 2

Fabric C, cut:

(1) 1 $\frac{1}{2}$ " x 3 $\frac{1}{2}$ " (3.81cm x 8.89cm) piece 3, centered on the plane number

Fabric D, cut:

(1) 4" x 1 $\frac{1}{2}$ " (10.16cm x 3.81cm) piece 4

Fabric E, cut:

(1) 1 $\frac{1}{4}$ " x 4 $\frac{1}{2}$ " (3.18cm x 11.43cm) piece 5

Fabric F, cut:

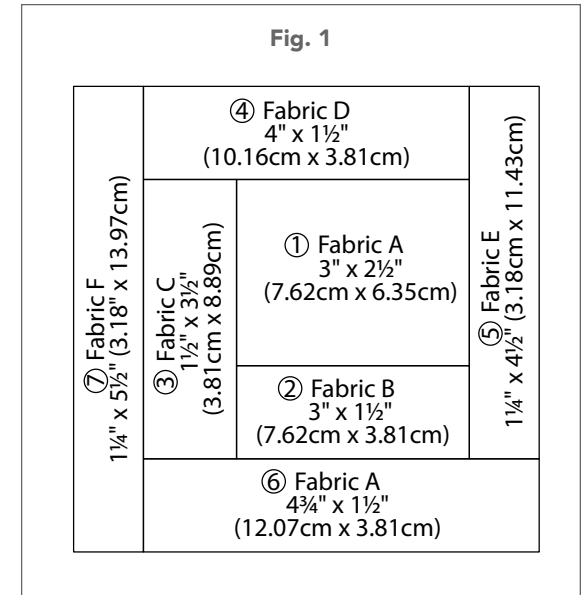
(1) 1 $\frac{1}{4}$ " x 5 $\frac{1}{2}$ " (3.18cm x 13.97cm) piece 7

Sewing

Note: Seam allowances are $\frac{1}{4}$ " (.64cm) and pieces are sewn right sides together.

1. Sew the long edges of pieces 1 to the lower edge of piece 1. Press the seam allowances to one side.
2. Add piece 3 to the left side of the step 1 unit. Press the seam allowance to one side.

3. Continue adding pieces in numerical order one strip at a time in a clockwise direction (**Fig. 1**).



4. Add decorative stitching with Coats Craft Thread to accent the seam lines as desired.
5. Sew the pincushion front to the 5 $\frac{1}{2}$ " (13.97cm) **Fabric A** backing square, leaving a small opening on one side for turning.

Finishing

6. Trim the corners to reduce bulk and turn the pincushion right side out.
7. Fill the pincushion with stuffing to the desired firmness and hand-stitch the opening closed.