



MATERIALS

Caron® One Pound™ (16 oz/454 g; 812 yds/742 m)

Contrast A Grass Green (10620) **1 ball or 276 yds/252 m**

Contrast B Lace (10585) **1 ball or 108 yds/98 m**

Contrast C Pale Green (10587) **1 ball or 125 yds/114 m**

Contrast D Kelly Green (10510) **1 ball or 143 yds/130 m**

Susan Bates® Straight Latch Rug hook tool. Susan Bates® yarn needle. 18" x 24" [45.5 x 61 cm] piece of 3.75 hpi latch canvas. 3½" [9 cm], 1½" [4 cm], 2½" [6 cm] wide pieces of cardboard. 18" [45.5 cm] length of ¼" [6 mm] diameter wooden dowel.



CRAFT | SKILL LEVEL: **EASY**

MEASUREMENTS

Approx 16" x 22½" [40.5 x 57 cm].

INSTRUCTIONS

Make latch yarn pieces: Wrap yarn around each cardboard width noted below to create different latch yarn lengths. Cut across one end to make pieces of yarn.

Cut A using 3½" [9 cm] wide piece of cardboard for 7" [18 cm] long strands.

Cut B and D using 1½" [4 cm] wide piece of cardboard for 3" [7.5 cm] long strands.

Cut C using 2½" [6 cm] wide piece of cardboard for 5" [12.5 cm] long strands.

You will need:

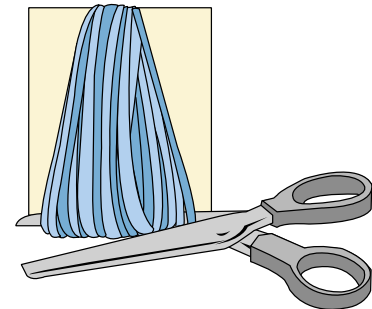
Contrast A – 1354 pieces.

Contrast B – 1237 pieces.

Contrast C – 858 pieces.

Contrast D – 1651 pieces.

With cut yarn and latch tool, work Wall Hanging following Chart on page 3 centered on the canvas, noting grid is 60 squares wide and 85 squares long.



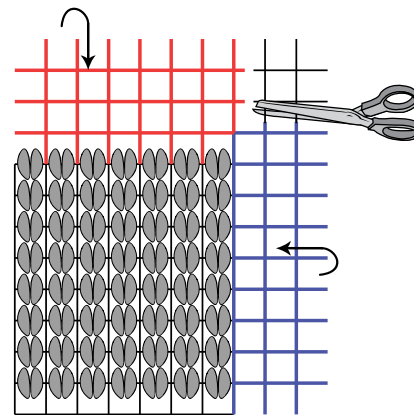
Edge Finishing:

With 2 strands of A and yarn needle, finish all 4 edges of Wall Hanging as follows:

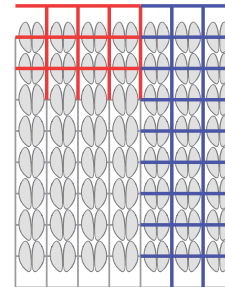
1. Trim evenly around edges of work leaving 2 squares fully intact. Trim and remove corners.
2. Fold unfinished edges to wrong side of work.

- With needle and 2 strands of yarn held together, whip stitch around unfinished squares, working down and around unfinished edge on right side of work. When whip-stitching around each 4th set of squares, also work under one strand on wrong side of canvas to secured folded edge in place.
- Tie off strands to secure and weave in ends.
- Align wooden dowel centered across top edge on WS. Using 2 strands of A held together, whip stitch around both ends and center of dowel to secure to latch canvas.
- Cut length of A X" [x cm] long, tie securely around both exposed ends of wooden dowel to create hanging string.
- Once Edges are finished, trim latch strands to be uniform, keeping continuity between different lengths. Optional: Trim strands at the edge of each color section slightly shorter to give more depth.

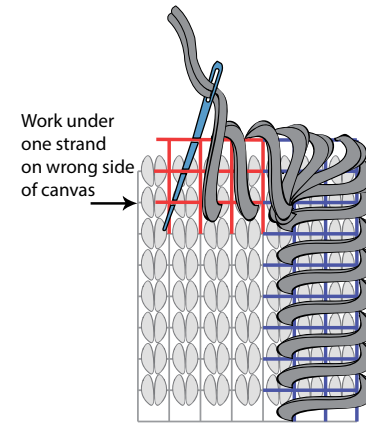
Edge Finishing



1. Trim evenly around edges of work leaving 2 squares fully intact. Trim and remove corners.



2. Fold unfinished squares to wrong side of work.



Work under one strand on wrong side of canvas

3. With needle and 2 strands of yarn held together, whip stitch around unfinished squares, working down and around unfinished edge on right side of work. When whip stitching around each 4th set of squares, also work under one strand on wrong side of canvas to secure folded edge in place.

4. Tie off strands to secure and weave in ends.





- Contrast A
- Contrast B
- Contrast C
- Contrast D