



Version 1



Version 2



Version 3

MATERIALS

Caron® One Pound™ (16 oz/453.6 g, 812 yds/742 m)

Version 1

Sunflower (10549) **1 ball**

Version 2

Soft Sage (10580) **1 ball**

Version 3

Lavender Blue (10613) **1 ball**

Size U.S. 8 (5 mm) knitting needles **or size needed to obtain gauge.**
Cable needle. 20" [51 cm] square pillow form.



KNIT | SKILL LEVEL: **INTERMEDIATE**

ABBREVIATIONS

Alt = Alternate(ing)

Approx = Approximately

Beg = Beginning

C6B = Slip next 3 stitches onto cable needle and leave at back of work. K3, then K3 from cable needle.

C6F = Slip next 3 stitches onto cable needle and leave at front of work. K3, then K3 from cable needle

Cont = Continuity

K = Knit

P = Purl

Pat = Pattern

Rep = Repeat

RS = Right side

St(s) = Stitch(es)

T5B = Slip next 2 stitches onto cable needle and leave at back of work. K3, then P2 from cable needle

T5F = Slip next 3 stitches onto cable needle and leave at front of work. P2, then K3 from cable needle

WS = Wrong side

MEASUREMENT

Approx 20" [51 cm] square.

GAUGE

16 sts and 20 rows = 4" [10 cm] in stocking st.

INSTRUCTIONS

Panel Pat (worked over 26 sts). See chart on page 2.

1st row: P5. C6F. P4. C6B. P5.

2nd and alt rows: Knit all knit sts and purl all purl sts as they appear.

3rd row: P3. (T5B. T5F) twice. P3.

5th row: P1. T5B. P4. C6B. P4. T5F. P1.

7th and 9th rows: P1. K3. P6. K6. P6. K3. P1.

11th row: P1. T5F. P4. C6B. P4. T5B. P1.

13th row: P3. (T5F. T5B) twice. P3.

14th row: As 2nd row.

These 14 rows form Panel Pat.

Cast on 112 sts. Pillow is worked in 1 piece.

1st row: (RS). P4. (Work 1st row of Panel Pat) 4 times. P4.

2nd row: K4. (Work 2nd row of Panel Pat) 4 times. K4.

3rd row: P4. (Work 3rd row of Panel Pat) 4 times. P4.

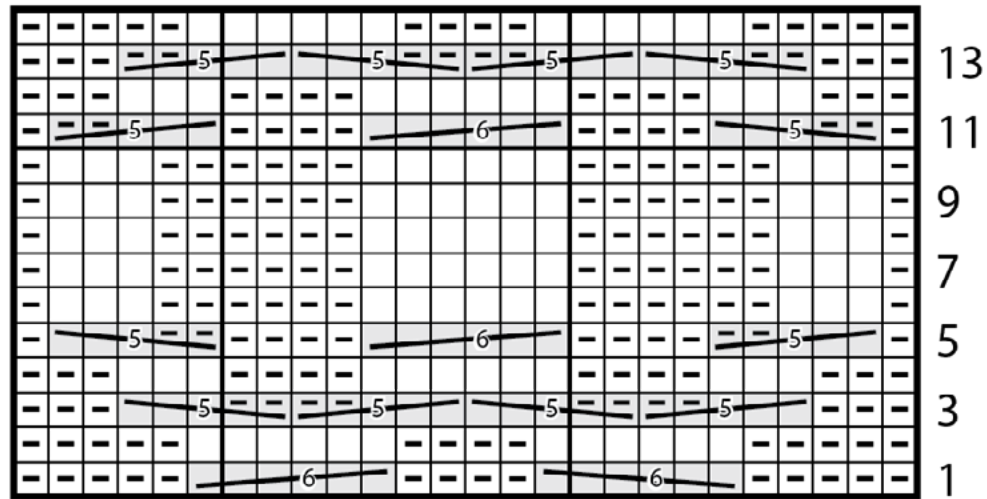
4th row: K4. (Work 4th row of Panel Pat) 4 times. K4.

Panel Pat is now in position. Cont in pat until work from beg measures approx 40" [1015 cm], ending on 14th row.

Cast off.

Fold piece in half and sew side seams. Insert pillow form. Sew opening closed.

PANEL PAT CHART



Key

□ = Knit on RS rows. Purl on WS rows

▣ = Purl on RS rows. Knit on WS rows

= T5B

= T5F

= C6B

= C6F