



KNIT | SKILL LEVEL: **EASY**

### ABBREVIATIONS

**Approx** = Approximately

**K** = Knit

**K2tog** = Knit next 2 stitches together

**M1** = Make 1 stitch by picking up horizontal loop lying before next stitch and knitting into back of loop

**P** = Purl

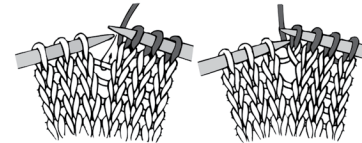
**Pat** = Pattern

**Rep** = Repeat

**RS** = Right side

**St(s)** = Stitch(es)

**WS** = Wrong side



### MEASUREMENTS

Approx 48" x 52" [122 x 132 cm].

### GAUGE

16 sts and 26 rows = 4" [10 cm] in Illusion Check Pat.

### INSTRUCTIONS

With A, cast on 190 sts. **Do not** join. Working back and forth across needle in rows, proceed as follows:

Knit 14 rows (garter st), noting 1st row is WS.

**Increase row:** (WS). K4. (M1. K7) 9 times. (M1. K8) 7 times. (M1. K7) 9 times. M1. K4. 216 sts.

Proceed in Illusion Check Pat as follows (see chart on page 3).

**1st row:** (RS). With A, knit.

**2nd row:** With A, K24. \*P24. K24. Rep from \* to end of row.

**3rd row:** With B, knit.

**4th row:** With B, P24. \*K24. P24. Rep from \* to end of row.

**5th to 32nd rows:** As 1st to 4th rows 7 times more.

**33rd row:** With A, knit.

### MATERIALS

**Caron® One Pound™** (16 oz/453.6 g; 812 yds/742 m)

**Contrast A** Hosta (10638) **2 balls**

**Contrast B** Blue Grotto (15019) **1 ball**

Size U.S. 8 [5 mm] circular knitting needle 36" [91.5 cm] long **or size needed to obtain gauge.** Yarn needle.

**34th row:** With A, P24. \*K24. P24.  
Rep from \* to end of row.

**35th row:** With B, knit.

**36th row:** With B, K24. \*P24. K24.  
Rep from \* to end of row.

**37th to 64th rows:** As 33rd to 36th  
rows 7 times more.

These 64 rows form Illusion Check  
Pat.

Rep these 64 rows 3 times more,  
then 1st to 32nd rows once more,  
for a total of 288 rows of Illusion  
Check Pat. Break B.

**Decrease row:** (RS). With A, K4.  
(K2tog. K6) 9 times. (K2tog. K7)  
7 times. (K2tog. K6) 9 times. K2tog.  
K3. 190 sts.

Knit 14 rows (garter st).

Cast off knitwise.

## Border

With A, and RS facing, pick up and  
knit 182 sts evenly along side edge  
of Blanket.

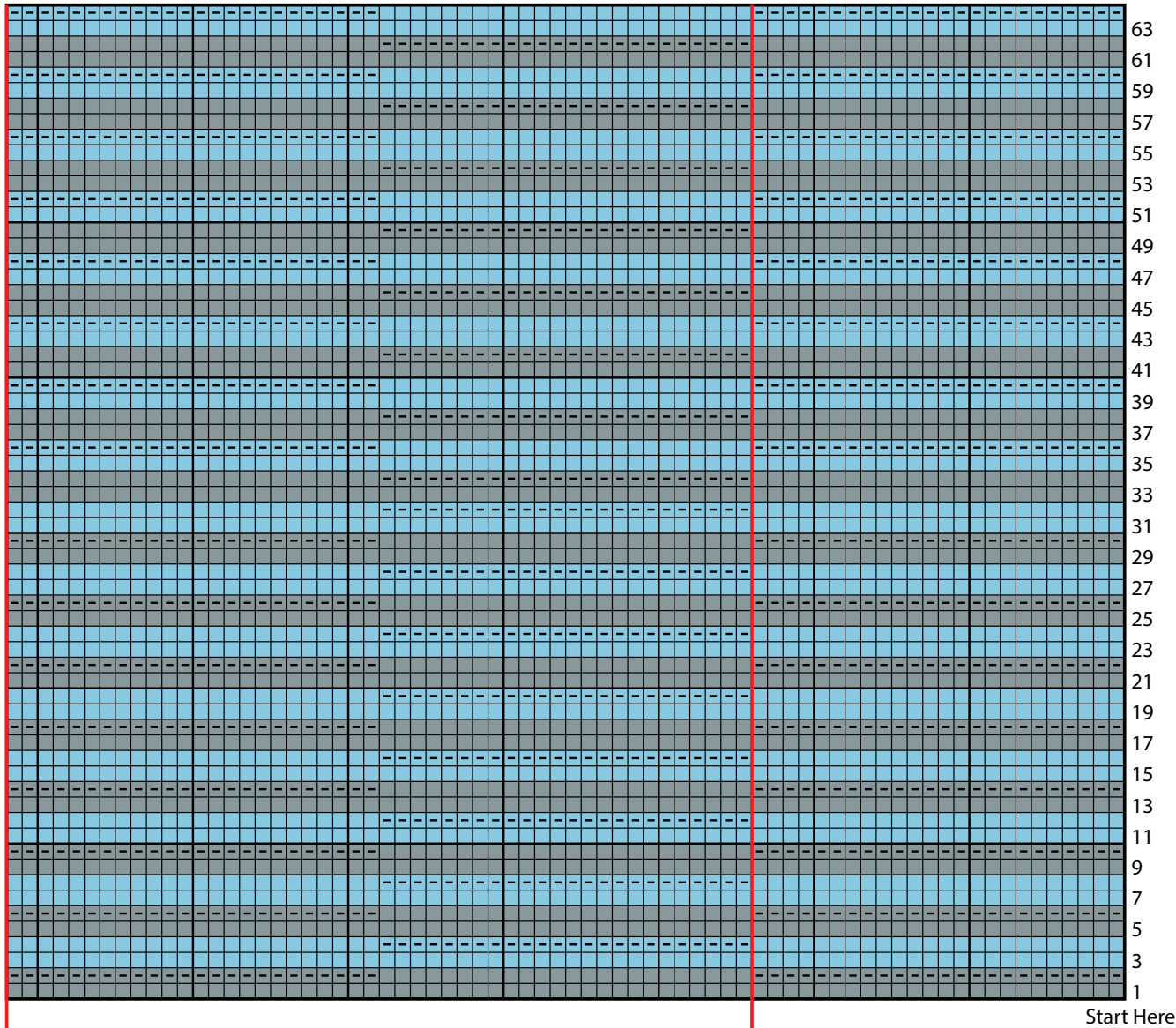
**Do not** join. Working back and  
forth across needle in rows,  
proceed as follows:

Knit 14 rows (garter st).

Cast off knitwise (WS).

Rep for opposite side edge of  
Blanket.





Key

- = With A, Knit on RS rows; Purl on WS rows
- = With B, Knit on RS rows; Purl on WS rows
- = With A, Purl on RS rows; Knit on WS rows
- = With B, Purl on RS rows; Knit on WS rows

48-st rep

Start Here