



MATERIALS
Caron® One Pound™ (16 oz/453.6 g; 812 yds/742 m)
 Light Terracotta (15010) **3 balls or 2038 yds/1870 m**
 Size U.S. 8 (5 mm) circular knitting needle 36" [91.5 cm] long **or size needed to obtain gauge.** Stitch markers. Yarn needle.



KNIT | SKILL LEVEL: **INTERMEDIATE**

ABBREVIATIONS

- | | | |
|------------------------|--------------------------|---------------------------|
| Approx = | P = Purl | RS = Right side |
| Approximately | PM = Place marker | SM = Slip marker |
| Beg = Beginning | Pat = Pattern | St(s) = Stitch(es) |
| K = Knit | Rep = Repeat | WS = Wrong side |

MEASUREMENTS

Approx 50 x 60" [127 x 152.5 cm].

GAUGE

18 sts and 24 rows = 4" [10 cm] in stocking st

INSTRUCTIONS

Cast on 228 sts. **Do not** join. Working back and forth across needle in rows, proceed as follows:

1st row: (RS). *K1. P1. Rep from * to end of row.

2nd row: *P1. K1. Rep from * to end of row.

Rep last 2 rows of Seed St Pat 9 times more (20 rows total).

Proceed in Check Texture Pat as follows (see Chart on page 2):

1st row: (RS). K1. (P1. K1) 7 times. PM. (K18. P18) 5 times. K18. PM. (P1. K1) 7 times. P1.

2nd row: P1. (K1. P1) 7 times. SM. (P18. K18) 5 times. P18. SM. (K1. P1) 7 times. K1.

3rd to 6th rows: As 1st and 2nd rows twice.

7th row: K1. (P1. K1) 7 times. SM. (K5. P8. K5. P5. K8. P5) 5 times. K5. P8. K5. SM. (P1. K1) 7 times. P1.

8th row: P1. (K1. P1) 7 times. SM. (P5. K8. P5. K5. P8. K5) 5 times. P5. K8. P5. SM. (K1. P1) 7 times. K1.

9th to 18th rows: As 7th and 8th rows 5 times.

19th to 24th rows: As 1st and 2nd rows 3 times.

25th row: K1. (P1. K1) 7 times. SM. (P18. K18) 5 times. P18. SM. (P1. K1) 7 times. P1.

26th row: P1. (K1. P1) 7 times. SM. (K18. P18) 5 times. K18. SM. (K1. P1) 7 times. K1.

27th to 30th rows: As 25th and 26th rows twice.

31st row: K1. (P1. K1) 7 times. SM. (P5. K8. P5. K5. P8. K5) 5 times. P5. K8. P5. SM. (P1. K1) 7 times. P1.

32nd row: P1. (K1. P1) 7 times. SM. (K5. P8. K5. P5. K8. P5) 5 times. K5. P8. K5. SM. (K1. P1) 7 times. K1.

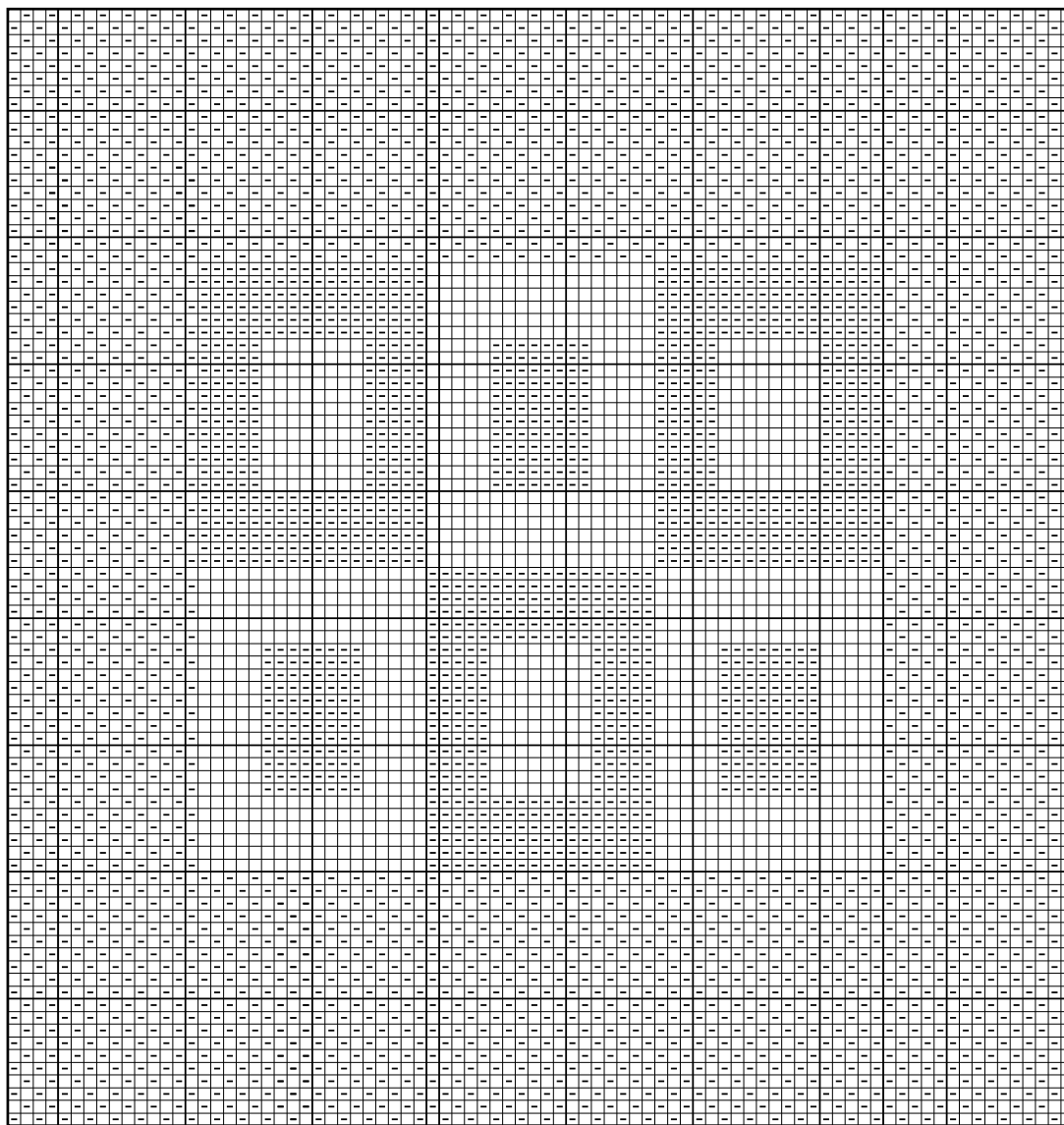
33rd to 42nd rows: As 31st and 32nd rows 5 times.

43rd to 48th rows: As 25th and 26th rows 3 times.

Rep 1st to 48th rows for Check Texture Pat, maintaining 15 sts at each side before and after markers in Seed St Pat, until work from beg measures approx 57" [145 cm], ending on 24th or 48th row of Check Texture Pat.

Work 20 rows in Seed St Pat across all sts, as given above, ending on a WS row.

Cast off in pat.



Key

- Knit on RS rows. Purl on WS rows.
- Purl on RS rows. Knit on WS rows.

47
45
43
41
39
37
35
33
31
29
27
25
23
21
19
17
15
13
11
9
7
5
3
1

Pattern
Start Here

Rep 5 times