



KNIT | SKILL LEVEL: **INTERMEDIATE**

ABBREVIATIONS

Approx = Approximately

Beg = Beginning

Cont = Continue

K = Knit

K2tog = Knit next 2 stitches together

M1 = Make 1 stitch by picking up horizontal loop lying before next stitch and knitting into back of loop

P = Purl

Pat = Pattern

Rep = Repeat

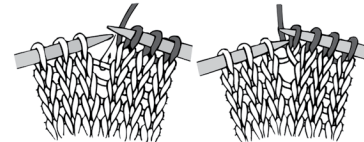
RS = Right side

Sl1Pwyib = Slip next stitch purlwise, with yarn in back of work

Sl1Pwyif = Slip next stitch purlwise, with yarn in front of work

St(s) = Stitch(es)

WS = Wrong side



MATERIALS

Caron® Anniversary Cakes™ (35.3 oz/1000 g; 1061 yds/970 m)

Contrast A Blue Hues (47004) **1 ball**

Contrast B Sticks & Stones (47005) **1 ball**

Size U.S. 11 (8 mm) circular knitting needle 36" [91.5 cm] long **or size needed to obtain gauge.** Yarn needle.

MEASUREMENTS

Approx 50" x 60" [127 x 152.5 cm].

GAUGE

13 sts and 18 rows = 4" [10 cm] in Mosaic Pat.

INSTRUCTIONS

Notes

- For higher contrast stripes (as shown), start with darkest color in Contrast A and lightest color in Contrast B. Be sure to keep any yarn you may have had to cut out to use later on.
- Carry color not in use loosely up side of work.

Stripe Pat

Work 4 rows A

Work 4 rows B.

These 8 rows form Stripe Pat.

BLANKET

With A, cast on 125 sts. **Do not** join. Working back and forth across needle in rows, proceed as follows: Knit 3 rows (garter st), noting 1st row is RS.

Increase row: (WS). K2. (M1. K3) 9 times. (M1. K4) 16 times. (M1. K3) 10 times. M1. K2. 161 sts (multiple of 4 sts + 9).

Proceed in pat as follows: See chart.

1st row: (RS). With B, K3. *K3. Sl1Pwyib. Rep from * to last 6 sts. K6.

2nd row: K3. *P3. Sl1Pwyif. Rep from * to last 6 sts. P3. K3.

3rd row: As 1st row.

4th row: K3. Purl to last 3 sts. K3. These 4 rows form Mosaic Pat.

First 8 rows of Stripe Pat are complete.

Cont in Mosaic and Stripe Pat until work from beg measures approx 59" [150 cm], ending on a 3rd row of pat in B.

Next row: (WS). K3. *P3. Sl1Pwyif.

Rep from * to last 6 sts. P3.

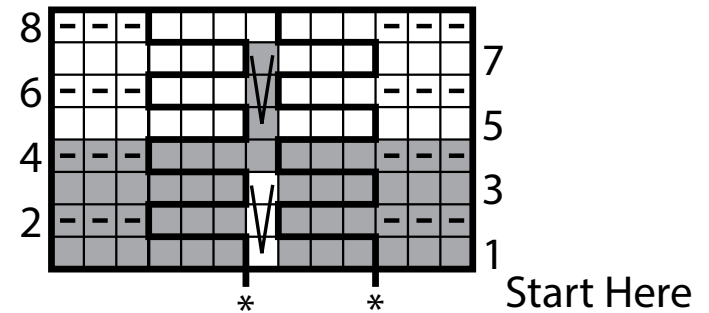
K3. Break B.

Next row: With A, knit.

Decrease row: (WS). K2. (K2tog. K2) 9 times. (K2tog. K3) 16 times. (K2tog. K2) 10 times. K2tog. K1. 125 sts.

Knit 2 rows (garter st).

Cast off knitwise (RS).



Key

□ = With A, knit on RS rows. Purl on WS rows.

◻ = With A, knit on WS rows.

■ = With B, knit on RS rows. Purl on WS rows.

◼ = With B, knit on WS rows.

⌋ = Sl1Pwyib on RS rows. Sl1Pwyif on WS rows.

⌌ = Sl1Pwyib on RS rows. Sl1Pwyif on WS rows.