

## MATERIALS

**Caron® One Pound™** (16 oz/454 g; 812 yds/742 m)

**Contrast A** Off White (10514) **1 ball**

**Caron® Jumbo Ombre™** (12 oz/340 g; 595 yds/546 m)

**Contrast B** Blush and Blue (19014) **1 ball**

Size U.S. 8 [5 mm] circular knitting needle 29" [73.5 cm] long **or size needed to obtain gauge.** Cable needle. Yarn needle.



KNIT | SKILL LEVEL: **INTERMEDIATE**

## ABBREVIATIONS

**Approx** = Approximately

**Beg** = Beginning

**Cont** = Continue(ity)

**C4B** = Slip next 2 stitches onto cable needle and leave at back of work. K2, then K2 from cable needle.

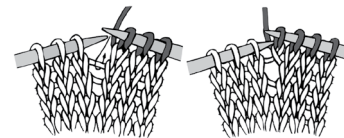
**C6B** = Slip next 3 stitches onto cable needle and leave at back of work. K3, then K3 from cable needle.

**Inc** = Increase(ing)

**K** = Knit

**K2tog** = Knit next 2 stitches together

**M1** = Make 1 stitch by picking up horizontal loop lying before next stitch and knitting into back of loop.



**P** = Purl

**Pat** = Pattern

**Rep** = Repeat

**RS** = Right side

**Sl1Pwyib** = Slip next stitch purlwise, with yarn in back of work

**Sl1Pwyif** = Slip next stitch purlwise, with yarn in front of work

**St(s)** = Stitch(es)

**T4B** = Slip next st onto a cable needle and leave at back of work. K3, then P1 from cable needle.

**T4F** = Slip next 3 sts onto a cable needle and leave at front of work. P1, then K3 from cable needle.

**WS** = Wrong side

## MEASUREMENTS

Approx 35" x 39" [89 x 99 cm].

## GAUGE

16 sts and 28 rows = 4" [10 cm] in garter st.

## INSTRUCTIONS

**Note:** Carry shade not in use loosely up side of Blanket. **Do not** break yarn.

## BLANKET

With A, cast on 140 sts. **Do not** join. Work back and forth across needle in rows as follows:

**1st and 2nd rows:** With A, knit.

**3rd and 4th rows:** With B, knit.

Rep last 4 rows 4 times more, ending on a 3rd row.

**Next row (inc row):** With B, K4. (M1. K9) 6 times. (M1. K8) 3 times. (M1. K9) 6 times. M1. K4. 156 sts.

Beg working in Cable Pat as follows (see Chart on page 3):

**1st row:** (RS). With A, K8. (C4B. K12. C6B. K12) 4 times. C4B. K8.

**2nd row:** With A, K8. P4. (K12. P6. K12. P4) 4 times. K8.

**3rd row:** With B, K8. [(S1Pwyib) 4 times. K12. (S1Pwyib) 6 times. K12] 4 times. (S1Pwyib) 4 times. K8.

**4th row:** With B, K8. (S1Pwyif) 4 times. [K12. (S1Pwyif) 6 times. K12. (S1Pwyif) 4 times] 4 times. K8.

**5th to 12th rows:** Rep to 1st to 4th rows twice.

**13th row:** With A, K8. (C4B. K11. T4B. T4F. K11) 4 times. C4B. K8.

**14th row:** With A, K8. P4. (K11. P3. K2. P3. K11. P4) 4 times. K8.

**15th row:** With B, K8. [(S1Pwyib) 4 times. K11. (S1Pwyib) 3 times. K2. (S1Pwyib) 3 times. K11] 4 times. (S1Pwyib) 4 times. K8.

**16th row:** With B, K8. (S1Pwyif) 4 times. [K11. (S1Pwyif) 3 times. K2. (S1Pwyif) 3 times. K11. (S1Pwyif) 4 times] 4 times. K8.

**17th row:** With A, K8. (C4B. K10. T4B. K2. T4F. K10) 4 times. C4B. K8.

**18th row:** With A, K8. P4. (K10. P3. K4. P3. K10. P4) 4 times. K8.

**19th row:** With B, K8. [(S1Pwyib) 4 times. K10. (S1Pwyib) 3 times. K4. (S1Pwyib) 3 times. K10] 4 times. (S1Pwyib) 4 times. K8.

**20th row:** With B, K8. (S1Pwyif) 4 times. [K10. (S1Pwyif) 3 times. K4. (S1Pwyif) 3 times. K10. (S1Pwyif) 4 times] 4 times. K8.

**21st row:** With A, K8. (C4B. K9. T4B. K4. T4F. K9) 4 times. C4B. K8.

**22nd row:** With A, K8. P4. (K9. P3. K6. P3. K9. P4) 4 times. K8.

**23rd row:** With B, K8. [(S1Pwyib) 4 times. K9. (S1Pwyib) 3 times. K6. (S1Pwyib) 3 times. K9] 4 times. (S1Pwyib) 4 times. K8.

**24th row:** With B, K8. (S1Pwyif) 4 times. [K9. (S1Pwyif) 3 times. K6. (S1Pwyif) 3 times. K9] 4 times. (S1Pwyif) 4 times. K8.

**25th row:** With A, K8. (C4B. K30) 4 times. C4B. K8.

**26th row:** With A, K8. P4. (K9. P3. K6. P3. K9. P4) 4 times. K8.

**27th and 28th rows:** As 23rd and 24th rows.

**29th to 32nd rows:** As 25th to 28th rows.

**33rd row:** With A, K8. (C4B. K9. T4F. K4. T4B. K9) 4 times. C4B. K8.

**34th row:** As 18th row.

**35th and 36th rows:** As 19th and 20th rows.

**37th row:** With A, K8. (C4B. K10. T4F. K2. T4B. K10) 4 times. C4B. K8.

**38th row:** As 14th row.

**39th and 40th rows:** As 15th and 16th rows.

**41st row:** With A, K8. (C4B. K11. T4F. T4B. K11) 4 times. C4B. K8.

**42nd row:** As 10th row.

**43rd and 44th rows:** As 3rd and 4th rows.

These 44 rows form Cable Pat.

Cont in Cable Pat until work from beg measures approx. 36" [91.5 cm], ending on a 12th row of pat.

**Next row:** (RS). With A, K4. (K2tog. K8) 6 times. (K2tog. K7) 3 times. (K2tog. K8) 6 times. K2tog. K3. 140 sts.

**Next row:** With A, knit.

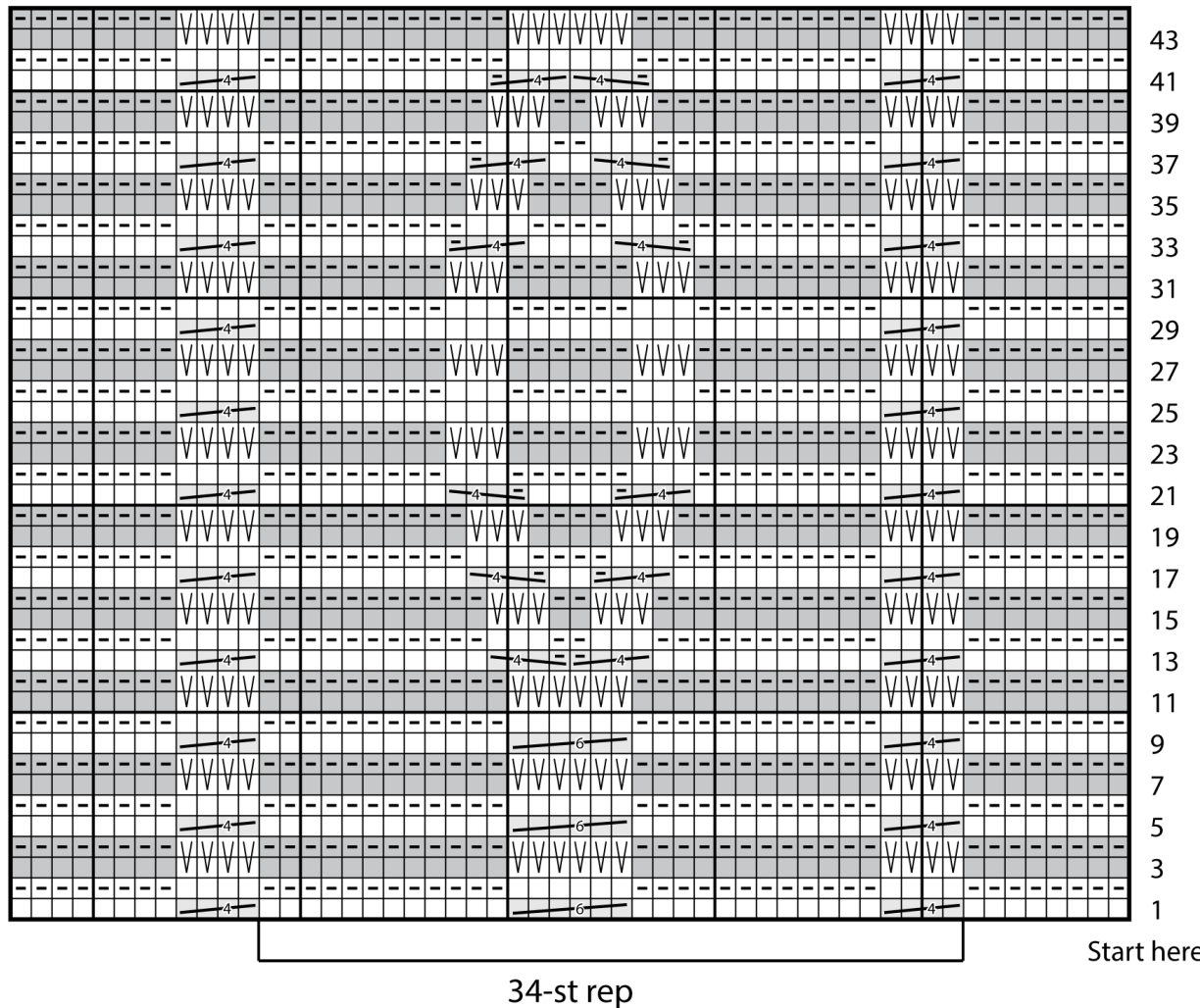
Proceed as follows:

**1st and 2nd rows:** With B, knit.

**3rd and 4th rows:** With A, knit.

Rep last 4 rows 4 times more, ending last rep after 2nd row. With B, cast off knitwise.

## Cable Pat



### Key

- ☐ = With A, knit on RS rows. Purl on WS rows.
- ◻ = With A, purl on RS rows. Knit on WS rows.
- ◼ = With B, knit on RS rows. Purl on WS rows.
- ◽ = With B, purl on RS rows. Knit on WS rows.
- ∇ = S11Pwyib on RS rows. S11Pwyif on WS rows.

- = C4B
- = C6B
- = T4B
- = T4F

