



KNIT | SKILL LEVEL: EASY

ABBREVIATIONS

Approx =

Approximately

K = Knit

P = Purl

Pat = Pattern

Rep = Repeat

RS = Right side

St(s) = Stitch(es)

Tog = Together

WS = Wrong side

MEASUREMENTS

Approx 54" [137 cm] wide x 63" [160 cm] long.

GAUGE

15 sts and 18 rows = 4" [10 cm] in stocking stitch.

INSTRUCTIONS

Notes:

- This pattern uses the 'Shadow Knitting' or 'Illusion Knitting' technique.
- This is a simple technique alternating rows of dark and light shades to produce a subtle patterning that appears and disappears depending on the angle from which it's viewed.
- RS rows are always knit.
- Use E (Off White) as Color 2 throughout.

SHADOW SQUARE PAT (worked over 33 sts - see chart on page 3).

1st row: (RS). With Color 2, knit.

2nd row: Purl.

3rd and 4th rows: With Color 1, knit.

5th row: With Color 2, knit.

6th row: Purl.

7th row: With Color 1, knit.

8th row: K13. P7. K13.

9th row: With Color 2, knit.

10th row: P13. K7. P13.

11th row: With Color 1, knit.

12th row: K10. P13. K10.

13th row: With Color 2, knit.

14th row: P10. K13. P10.

15th row: With Color 1, knit.

16th row: K7. P19. K7.

17th row: With Color 2, knit.

18th row: P7. K19. P7.

19th row: With Color 1, knit.

20th row: K5. P23. K5.

21st row: With Color 2, knit.

MATERIALS

Caron® One Pound™ (16 oz/454 g; 812 yds/742 m)

Contrast A Truffle (100652) **1 ball**

Contrast B Dijon (10654) **1 ball**

Contrast C Sunset (19012) **1 ball**

Contrast D Faded Brick (10653) **1 ball**

Contrast E Off White (10514) **1 ball**

Size U.S. 9 (5.5 mm) knitting needles **or size needed to obtain gauge.**
Yarn needle.

22nd row: P5. K23. P5.
23rd row: With Color 1, Knit.
24th row: K4. P25. K4.
25th row: With Color 2, knit.
26th row: P4. K25. P4.
27th row: With Color 1, knit.
28th row: K3. P27. K3.
29th row: With Color 2, knit.
30th row: P3. K27. P3.
31st to 38th rows: As 27th to 30th rows twice.
39th and 40th rows: With Color 1, as 23rd and 24th rows.
41st and 42nd rows: With Color 2, as 25th and 26th rows.
43rd and 44th rows: With Color 1, as 19th and 20th rows.
45th and 46th rows: With Color 2, as 21st and 22nd rows.
47th and 48th rows: With Color 1, as 15th and 16th rows.
49th and 50th rows: With Color 2, as 17th and 18th rows.
51st and 52nd rows: With Color 1, as 11th and 12th rows.
53rd and 54th rows: With Color 2, as 13th and 14th rows.
55th and 56th rows: With Color 1, as 7th and 8th rows.
57th and 58th rows: With Color 2, as 9th and 10th rows.
59th and 60th rows: With Color 1, knit.

61st and 62nd rows: With Color 2, as 2nd and 3rd rows.
63rd and 64th rows: With Color 1, knit.
Rep these 64 rows for Shadow Square Pat.

STRIPS 1 & 4

Using A as Color 1, cast on 33 sts. Knit 1 row, noting 1st row is WS. Work as given for Shadow Square Pat, using A as Color 1 and E as Color 2. Rep 64 rows of pat 6 times more, keeping E as Color 2, and changing Color 1 after each 64 row rep in following sequence: C, B, D, A, B, C. Cast off at end of last row.

STRIPS 2 & 5

Using C as Color 1, cast on 33 sts. Knit 1 row, noting 1st row is WS. Work as given for Shadow Square Pat, using C as Color 1 and E as Color 2. Rep 64 rows of pat 6 times more, keeping E as Color 2, and changing Color 1 after each 64 row rep in following sequence: D, A, C, B, A, D. Cast off at end of last row.

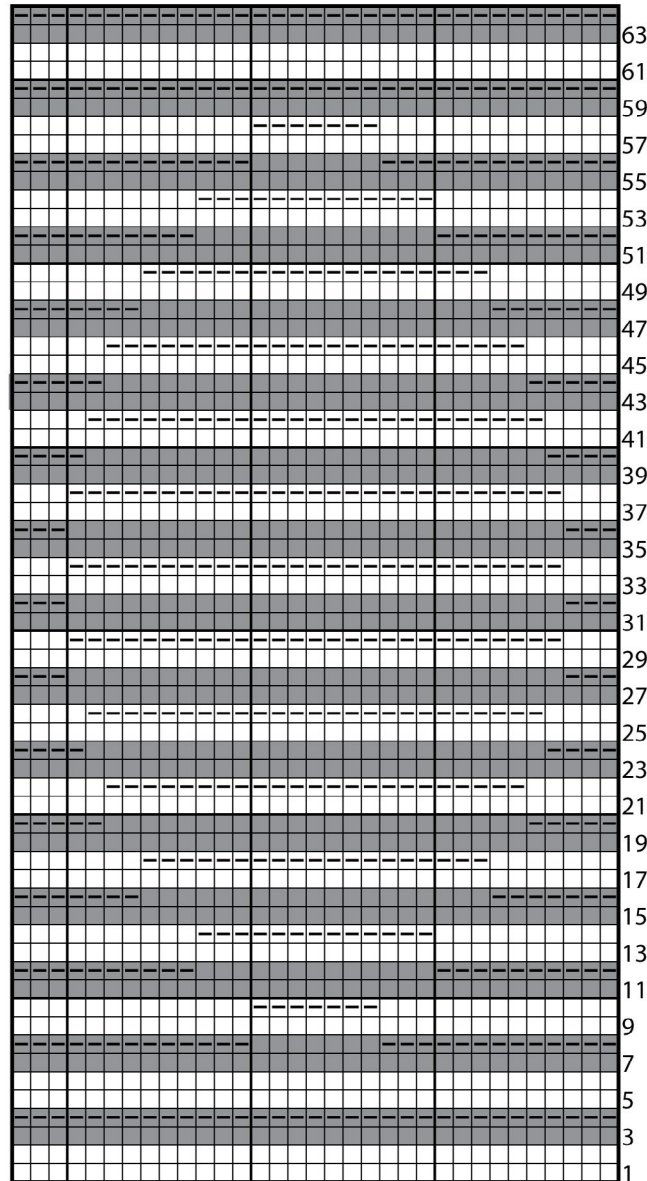
STRIPS 3 & 6

Using B as Color 1, cast on 33 sts. Knit 1 row, noting 1st row is WS. Work as given for Shadow Square, using B as Color 1 and E as Color 2. Rep 64 rows of pat 6 times more, keeping E as Color 2, and changing Color 1 after each 64 row repeat in following sequence: A, C, D, A, C, B. Cast off at end of last row.

FINISHING

Seam Strips tog in numerical order (1, 2, 3, 4, 5, 6). Pin Blanket onto flat surface, cover with damp cloths and allow cloths to dry.

CHART



KEY

- = With Color 2, knit on RS rows. Purl on WS rows.
- ◻ = With Color 2, knit on WS rows.
- = With Color 1, knit on RS rows. Purl on WS rows.
- ◼ = With Color 1, knit on WS rows.

