



KNIT | SKILL LEVEL: INTERMEDIATE

## ABBREVIATIONS

**Alt** = Alternate(ing)

**Approx** = Approximately

**Beg** = Begin(ning)

**K** = Knit

**K2tog** = Knit Next 2 Stitches Together

**M1** = Make 1 stitch by picking up horizontal loop lying before next stitch and knitting into back of loop.

**Pat** = Pattern

**Rep** = Repeat

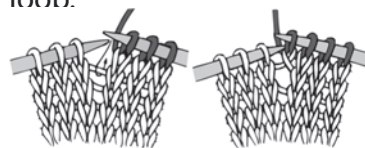
**RS** = Right side

**Sl1Pwyib** = Slip next stitch purlwise with yarn at back of work.

**Sl1Pwyif** = Slip next stitch purlwise with yarn at front of work.

**St(s)** = Stitch(es)

**WS** = Wrong side



## MEASUREMENTS

Approx 50" x 60" [127 x 152.5 cm].

## GAUGE

10 sts and 22 rows = 4" [10 cm] in garter st.

## INSTRUCTIONS

With A, cast on 125 sts.

**1st row:** (WS). Knit.

**\*\*2nd and 3rd rows:** With B, knit.

**4th and 5th rows:** With A, knit.

Rep 2nd to 5th rows once more, then 2nd to 4th rows once.\*\*

**Next row:** (WS). With A, \*K2. M1. K2. Rep from \* to last st. K1. 156 sts.

Proceed in pat as follows:

**1st row:** (RS). With A, K6. \*Sl1Pwyib. K1. Rep from \* to last 5 sts. K5.

**2nd row:** With A, K6. \*Sl1Pwyif. K1. Rep from \* to last 5 sts. K5.

**3rd and 4th rows:** With A, knit.

**5th row:** With B, K6. \*K1. Sl1Pwyib. Rep from \* to last 5 sts. K5.

**6th row:** With B, K5. \*Sl1Pwyif. K1. Rep from \* to last 6 sts. K6.

## MATERIALS

Caron® Anniversary Cakes™ (35.2 oz /1000 g; 1061 yds/970 m)

**Contrast A** Monstera (20027) **1 cake**

**Contrast B** Tropical Butterfly (20016) **1 cake**

Size U.S. 11 (8 mm) circular knitting needle 36" [91.5 cm] long **or size needed to obtain gauge.**

**7th and 8th rows:** With B, knit.  
Rep 1st to 8th rows until work from beg measures approx 58" [147.5 cm], ending on 2nd or 6th row.

**Next row:** (RS). With B, \*K2. K2tog. K1. Rep from \* to last st. K1. 125 sts.

**Next row:** With B, knit.

**Next 2 rows:** With A, knit.

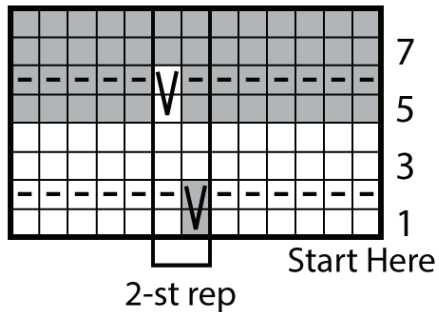
**Next 2 rows:** With B, knit.

Rep last 4 rows once more.

**Next 2 rows:** With A, knit.

**Next row:** With B, knit.

Cast off knitwise (WS).



Key

□ = A

■ = B

□ = With appropriate color, Knit on RS rows. Purl on WS rows.

▣ = With appropriate color, Purl on RS rows. Knit on WS rows.

▣ = With appropriate color, S1Pwyib on RS rows.  
S1Pwyif on WS rows.

