



KNIT | SKILL LEVEL: INTERMEDIATE

ABBREVIATIONS

Approx = Approximately

Beg = Beginning

C2B = Slip next stitch onto cable needle and leave at back of work. K1, then K1 from cable needle.

C2F = Slip next stitch onto cable needle and leave at front of work. K1, then K1 from cable needle.

Cr4B = Slip next 2 stitches onto cable needle and leave at back of work. K2, then (P1. K1) from cable needle.

Cr4F = Slip next 2 stitches onto cable needle and leave at front of work. K1. P1, then K2 from cable needle.

K = Knit

K2tog = Knit next 2 stitches together

K2togtbl = Knit next 2 stitches together through back loops

P = Purl

Pat = Pattern

Pss = Pass slipped stitch over

Rep = Repeat

RS = Right side

Sl1 = Slip next stitch knitwise

St(s) = Stitch(es)

Tog = Together

Tw4B = Slip next 2 stitches onto cable needle and leave at back of work. K2, then P2 from cable needle.

Tw4F = Slip next 2 stitches onto cable needle and leave at front of work. P2, then K2 from cable needle.

Tw2R = Knit into front of 2nd stitch on needle, then knit into front of first stitch and slip both stitches off needle together

MATERIALS

Caron® One Pound™ (16 oz/454g; 812 yds /742 m)

Medium Gray Mix (10617)

3 balls

Size U.S. 9 (5.5 mm) circular knitting needle 36" [91.5 cm] long **or size needed to obtain gauge.** Pair of size U.S. 9 (5.5 mm) double-pointed knitting needles for I-Cord edging. Cable needle. Yarn needle.

MEASUREMENTS

Approx 43" x 58" [109 x 147.5 cm].

GAUGE

15 sts and 19 rows = 4" [10 cm] in stocking st.

INSTRUCTIONS

Cast on 178 sts. **Do not** join. Working back and forth across needle in rows, proceed as follows:

1st row: (RS). *K10. P1. C2B. P1. Tw4F. Tw4B. P3. Tw2R. P3. Tw4F. Tw4B. P1. C2F. P1. Rep from * to last 10 sts. K10.

2nd row: K10. *K1. P2. K3. P4. K5. P2. K5. P4. K3. P2. K11. Rep from * to end of row.

3rd row: *K10. P1. K2. P3. Tw4B. P4. C2B. C2F. P4. Tw4F. P3. K2. P1. Rep from * to last 10 sts. K10.

4th row: K10. *K1. P2. K3. P2. K6. P4. K6. P2. K3. P2. K11. Rep from * to end of row.

5th row: *K10. P1. C2B. P1. Tw4B. P4. Cr4B. Cr4F. P4. Tw4F. P1. C2F. P1. Rep from * to last 10 sts. K10.

6th row: K10. *K1. P2. K1. P2. K6. P2. K1. P2. K1. P2. K6. P2. K1. P2. K11. Rep from * to end of row.

7th row: *K10. P1. K2. P1. K2. P4. Tw4B. P1. Tw2R. P1. Tw4F. P4. K2. P1. K2. P1. Rep from * to last 10 sts. K10.

8th row: K10. *K1. P2. K1. P2. K4. P2. K3. P2. K3. P2. K4. P2. K1. P2. K11. Rep from * to end of row.

Rep 1st to 8th rows for Cable Pat until Blanket measures approx 57" [145 cm], ending on an 8th row of pat.

Cast off.

Applied I-Cord Edging: With pair of double-pointed needles, cast on 3 sts onto right-hand needle. Beg at corner of Blanket, with RS facing and right-hand needle, *pick up 1 st from top edge of Blanket. Slide 4 sts over to opposite end of needle. Bring yarn around to back of work, K2. K2togtbl. Rep from * around all sides of Blanket.

Final row: Sl1. K2tog. psso. Fasten off. Sew beg and end of Applied I-Cord tog.



Key

☐ = Knit on RS rows. Purl on WS rows

☐ = Purl on RS rows. Knit on WS rows.

= C2B

= C2F

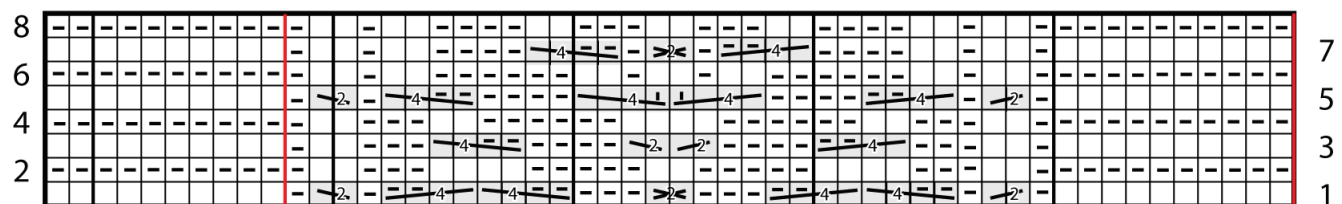
= Cr4B

= Cr4F

= Tw4B

= Tw4F

= Tw2R



42 st repeat

Start here