



KNIT | SKILL LEVEL: EASY

ABBREVIATIONS

Approx = Approximately

Cont = Continue(ity)

K = Knit

K2tog = Knit next 2 stitches together

Kfb = Increase 1 stitch by knitting into front and back of next stitch

Pat = Pattern

Rep = Repeat

Ssk = Slip next 2 stitches knitwise one at a time. Pass them back onto left-hand needle, then knit through back loops together

St(s) = Stitch(es)

WS = Wrong side

MEASUREMENTS

Approx 49" x 60" [124.5 x 152.5 cm].

GAUGE

16 sts and 20 rows = 4" [10 cm] in stocking st.

INSTRUCTIONS

Notes:

- Take care to close gap between ssk and K2tog by pulling snugly on each stitch as its made.
- Carry color not in use loosely up side of work unless otherwise stated.

Stripe Pat

With A, 55 rows. Join B.

(With B, 2 rows. With A, 2 rows) 6 times. Break A.

With B, 56 rows. Join C. (With C, 2 rows. With B, 2 rows) 6 times. Break B.

With C, 56 rows. Join D. (With D, 2 rows. With C, 2 rows) 6 times. Break C.

With D, 56 rows. Join E. (With E, 2 rows. With D, 2 rows) 6 times. Break D.

With E, 56 rows.

These 375 rows form Stripe Pat.

MATERIALS

Caron® One Pound™ (16 oz/453.6 g; 812 yds/742 m)

Contrast A Off White (10514) **1 ball or 455 yds/416 m**

Contrast B Taupe (10511) **1 ball or 530 yds/485 m**

Contrast C Azure (10523) **1 ball or 530 yds/485 m**

Contrast D Aqua (10622) **1 ball or 530 yds/485 m**

Contrast E Ocean (10611) **1 ball or 455 yds/416 m**

Size U.S. 8 (5 mm) circular knitting needle 36" [91.5 cm] long **or size needed to obtain gauge.** Yarn needle.

BLANKET

With A, cast on 215 sts (multiple of 11 sts + 6). **Do not** join. See chart shown right.

Working back and forth across needle in rows, proceed as follows:

1st to 5th rows: Knit, noting first row is WS.

6th row: K3. *K2tog. K2. (Kfb) twice. K3. ssk. Rep from * to last 3 sts. K3.

7th row: K3. Purl to last 3 sts. K3.

8th row: As 6th row.

9th row: As 7th row.

10th row: As 6th row.

Last 10 rows form Waves Pat.

First 10 rows of Stripe Pat are complete.

Cont in Waves Pat as established until 375 rows of Stripe Pat are complete (ending on 5th row of Waves Pat).

With E, cast off.

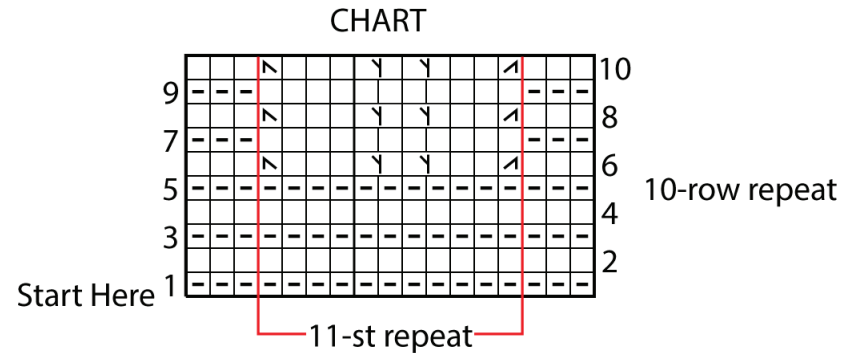







CHART KEY

-  = Knit on RS rows. Purl on WS rows.
-  = Knit on WS rows.
-  = ssk
-  = K2tog
-  = Kfb

