



MATERIALS

Caron® One Pound™ (16 oz/454 g; 812 yds/742 m)

Main Color (MC) Off White (10514) **1 ball**

Contrast A Living Coral (02003) **1 ball**

Size U.S. 8 (5 mm) knitting needles **or size needed to obtain gauge.**
18" [45.5 cm] square pillow form. Yarn needle.



KNIT | SKILL LEVEL: **INTERMEDIATE**

ABBREVIATIONS

Approx =

Approximately

Beg = Beginning

Cont = Continue(ity)

K = Knit

Pat = Pattern

Rep = Repeat

RS = Right side

Sl1Pwyib = Slip next
stitch purlwise with
yarn at back of work

Sl3Pwyib = Slip next
3 stitches purlwise
with yarn at back of
work

Sl1Pwyif = Slip next
stitch purlwise with
yarn at front of work

Sl3Pwyif = Slip next
3 stitches purlwise
with yarn at front of
work

St(s) = Stitch(es)

Tog = Together

WS = Wrong side

MEASUREMENT

Approx 18" [45.5 cm] square

GAUGE

15 sts and 29 rows = 4" [10 cm] in
garter st.

INSTRUCTIONS

Note: Each row of squares in chart represents 2 rows of knitting (which is why only odd numbers are shown at beg of each chart row). The first square in the left column indicates the color of yarn being worked in that row. For eg, in rows 1 & 2, all blank (white) squares are knit, and all black squares are slipped with

yarn at WS of work. In rows 3 & 4, all black squares are knit and all blank (white) squares are slipped with yarn at WS of work.

FRONT

With MC, cast on 69 sts. Knit 1 row. Following chart (see page 2), proceed in pat as follows:

****1st row:** (RS). With A, K1. Sl1Pwyib. *With A, K1. Sl3Pwyib. Rep from * to last 3 sts. With A, K1. Sl1Pwyib. With A. K1.

2nd row: With A, K1. Sl1Pwyif. *With A, K1. Sl3Pwyif. Rep from * to last 3 sts. With A, K1. Sl1Pwyif. With A. K1.

3rd and 4th rows: With MC, knit.
Chart is now in position. First 4 rows of chart are complete.
Cont to work chart to end of chart, ending on 131st row.
With MC, cast off knitwise (WS).

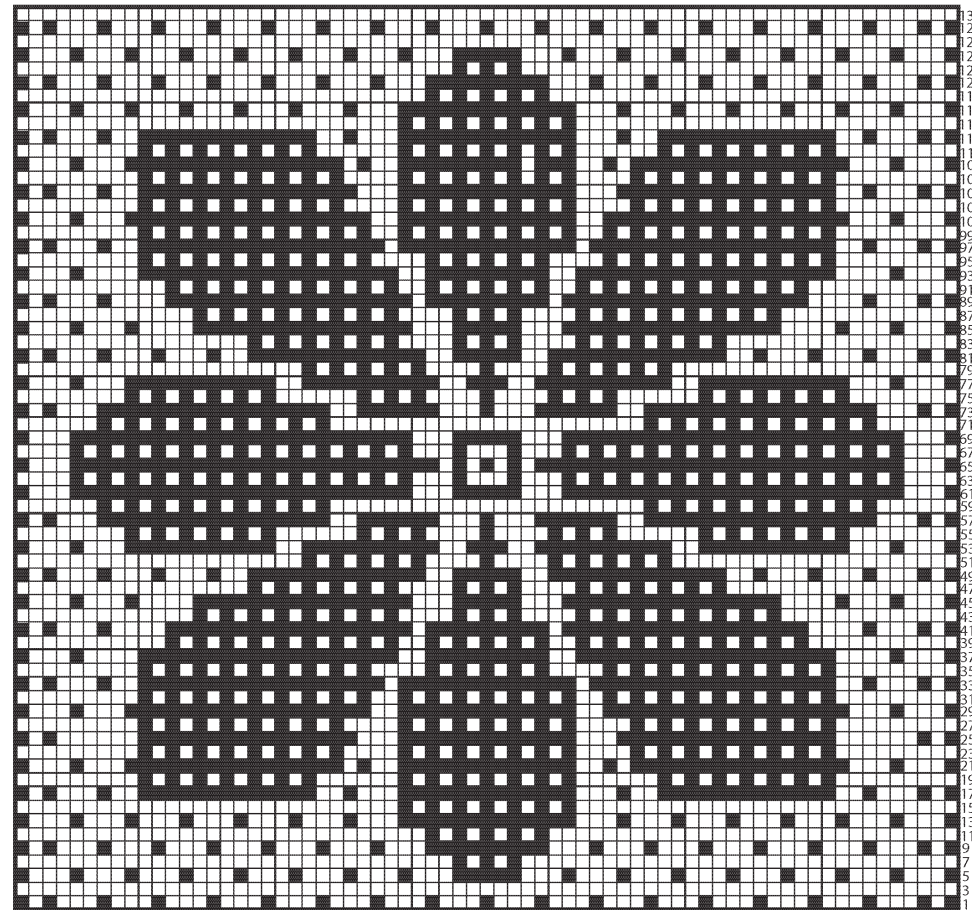
BACK

Work as given for Front, substituting A for MC and MC for A.

FINISHING

Pin all pieces to measurements.
Cover with a damp cloth leaving cloth to dry.

With WS of Front and Back tog, sew 3 sides seams. Insert pillow form.
Sew opening closed.



Pillow Front Key

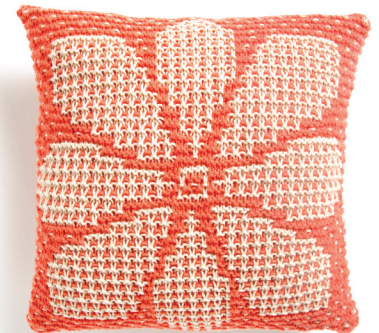
□ = MC
■ = Contrast A

Pillow Back Key

□ = Contrast A
■ = MC

Note: Each row of squares in chart represents 2 rows of knitting.
The first square (beside row number at left) indicates color of yarn being worked in that line.

Front



Back

