



## MATERIALS

Caron® Kindness™ (7 oz/198 g; 345 yds/315 m)  
Tomato (53010) **6 balls**

Size U.S. 8 (5 mm) circular knitting needle 29" [70 cm] long **or size needed to obtain gauge.** Stitch markers.



KNIT | SKILL LEVEL: **EASY**

## ABBREVIATIONS

**Approx** = Approximately

**Beg** = Begin(ning)

**Cont** = Continue(ity)

**K** = Knit

**P** = Purl

**Pat** = Pattern

**Rep** = Repeat

**RS** = Right side

**St(s)** = Stitch(es)

**WS** = Wrong side

## MEASUREMENTS

Approx 50 x 60" [127 x 162.5 cm].

## GAUGE

18 sts and 24 rows = 4" [10 cm] in stocking st.

## INSTRUCTIONS

Cast on 198 sts. **Do not** join. Working back and forth across needle in rows, proceed as follows:

**1st row:** (RS). Knit.

**2nd row:** P2. \*K2. P2. Rep from \* to end of row.

**3rd row:** Knit.

Rep last 2 rows 5 times more.

**Next row:** (WS). (P2. K2) twice. Purl to last 8 sts. (K2. P2) twice.

Proceed in pat as follows:

**1st row:** K10. P2. \*P12. K2. P2. Rep from \* to last 10 sts. K10.

**2nd row:** (P2. K2) twice. P2. \*K2. P2. K12. Rep from \* to last 12 sts. (K2. P2) 3 times.

**3rd row:** As 1st row.

**4th row:** (P2. K2) twice. Purl to last 8 sts. (K2. P2) twice.

**5th row:** K10. P2. \*K2. (P1. K1) 5 times. K2. P2. Rep from \* to last 10 sts. K10.

**6th row:** (P2. K2) twice. P2. \*K2. P2. (P1. K1) 5 times. P2. Rep from \* to last 12 sts. (K2. P2) 3 times.

**7th row:** K10. P2. \*K2. (K1. P1) 5 times. K2. P2. Rep from \* to last 10 sts. K10.

**8th row:** (P2. K2) twice. P2. \*K2. P2. (K1. P1) 5 times. P2. Rep from \* to last 12 sts. (K2. P2) 3 times.

**9th to 12th rows:** As 5th to 8th rows.

**13th row:** As 5th row.

**14th row:** As 6th row.

**15th row:** K10. P2. \*K2. P14. Rep from \* to last 10 sts. K10.

**16th row:** (P2. K2) twice. P2. \*K14. P2. Rep from \* to last 12 sts. (K2. P2) 3 times.

**17th row:** As 15th row.

**18th row:** As 4th row.

These 18 rows form pat. Cont in pat as established until work from beg measures approx 57½" ending on 18th row.

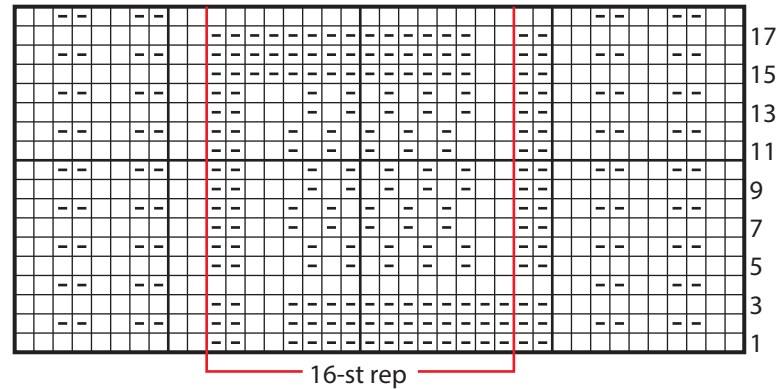
**Next row:** (RS). Knit.

**Next row:** P2. \*K2. P2. Rep from \* to end of row.

**Next row:** Knit.

Rep last 2 rows 5 times.

Cast off. (WS).



Key

- = Knit on RS rows. Purl on WS
- = Purl on RS rows. Knit on WS

