



MATERIALS

Caron® One Pound™ (16 oz/453.6 g; 812 yds/742 m)

Off White (10514)

3 balls

Size U.S. 8 (5 mm) circular knitting needle 29" [74 cm] long **or size needed to obtain gauge.** Cable needle.

ABBREVIATIONS:

Approx =

Approximately

Beg = Beginning

C4B = Slip next 2 stitches onto cable needle and leave at back of work. K2, then K2 from cable needle.

Cr3B = Slip next 2 stitches onto cable needle and leave at back of work. K1, then K2 from cable needle

Cr3F = Slip next stitch onto cable needle and

leave at front of work. K2, then K1 from cable needle

Cont = Continue(ity)

Inc = Increase(ing)

K = Knit

K2tog = Knit next 2 stitches together

Kfb = Increase 1 stitch by knitting into front and back of next stitch

P = Purl

P2tog = Purl next 2 stitches together

Pat = Pattern

Rem = Remain(ing)

Rep = Repeat

RS = Right side

Ssk = Slip next 2 stitches knitwise one at a time. Pass them back onto left-hand needle, then knit through back loops together

St(s) = Stitch(es)

Tog = Together

WS = Wrong side

Yo = Yarn over

 KNIT | SKILL LEVEL: INTERMEDIATE

MEASUREMENT

Approx 62" [157.5 cm] square.

GAUGE

16 sts and 20 rows = 4" [10 cm] in stocking st.

INSTRUCTIONS

SQUARE (make 16).

Note: First Half of Square is worked as a triangle from point to point in Lacy Cable Pat. Second Half of Square is worked as a triangle in Cable Column Pat and begins with picked up sts along straight side edge of First Half.

First Half

Cast on 3 sts. See Chart on page 3.
Work back and forth across needle in rows as follows:

1st row: (RS). K1 (selvege st). P1. Kfb. 4 sts.

2nd row: K4.

3rd row: K1. P2. Kfb. 5 sts.

4th row: K5.

5th row: K1. P3. Kfb. 6 sts.

6th row: K1. P1. K4.

7th row: K1. P3. K1. Kfb. 7 sts.

8th row: K1. P2. K4.

9th row: K1. P3. yo. ssk. Kfb. 8 sts.

10th row: K1. P3. K4.

11th row: K1. P3. yo. ssk. K1. Kfb. 9 sts.

12th row: K1. P4. K4.

13th row: K1. P3. yo. ssk. K2tog. yo. Kfb. 10 sts.

14th row: K2. P4. K4.

15th row: K1. P3. C4B. P1. Kfb. 11 sts.

16th row: K3. P4. K4.

17th row: K1. P3. yo. ssk. K2tog. yo. P2. Kfb. 12 sts.

18th row: K4. P4. K4.

19th row: K1. P3. yo. ssk. K2tog. yo. P3. Kfb. 13 sts.

20th row: K1. P1. K3. P4. K4.

21st row: K1. P3. yo. ssk. K2tog. yo. P3. K1. Kfb. 14 sts.

22nd row: K1. P2. K3. P4. K4.

23rd row: K1. P3. yo. ssk. K2tog. yo. P3. yo. ssk. Kfb. 15 sts.

24th row: K1. P3. K3. P4. K4.

25th row: K1. P3. C4B. P3. yo. ssk. K1. Kfb. 16 sts.

26th row: K1. (P4. K3) twice. K1

Keeping cont of pat, as placed in last 16 rows, inc 1 st at end of every following RS row (as before) until there are 33 sts.

Work 1 row (WS) in pat.

Next row: (RS). Pat to last 2 sts. K2tog.

Next row: Work even in pat.

Rep last 2 rows until there are 3 sts. Cast off.

Second Half

With RS of First Half facing, pick up and knit 92 sts evenly across selvege (straight) edge of First Half.

1st row: (WS). K1. *P6. K1. Rep from * to end of row.

2nd row: (RS). K1. *Cr3B. Cr3F. P1. Rep from * to end of row.

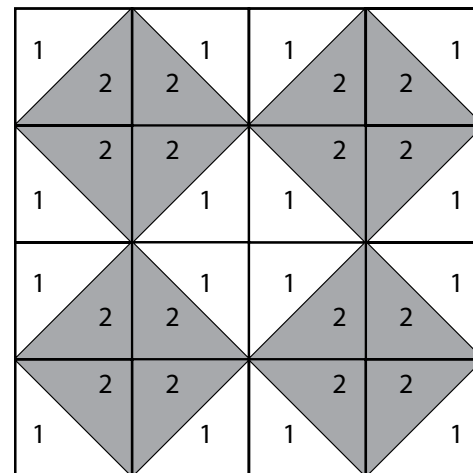
Last 2 rows form Cable Column Pat.

Next row: K2tog. Pat to last 2 sts. ssk.

Keeping cont of pat (as placed), rep last row until 2 sts rem. Cast off.

FINISHING

Pin Squares onto flat surface to measure approx 15" [38 cm] square. Cover with a damp cloth leaving cloth to dry. Following assembly diagram, sew 16 Squares tog.



Bottom edging: With RS facing, pick up and knit 240 sts evenly across bottom edge.

**Knit 2 rows.

Next row: (WS). K1. *yo. P2tog. Rep from * to last st. K1.

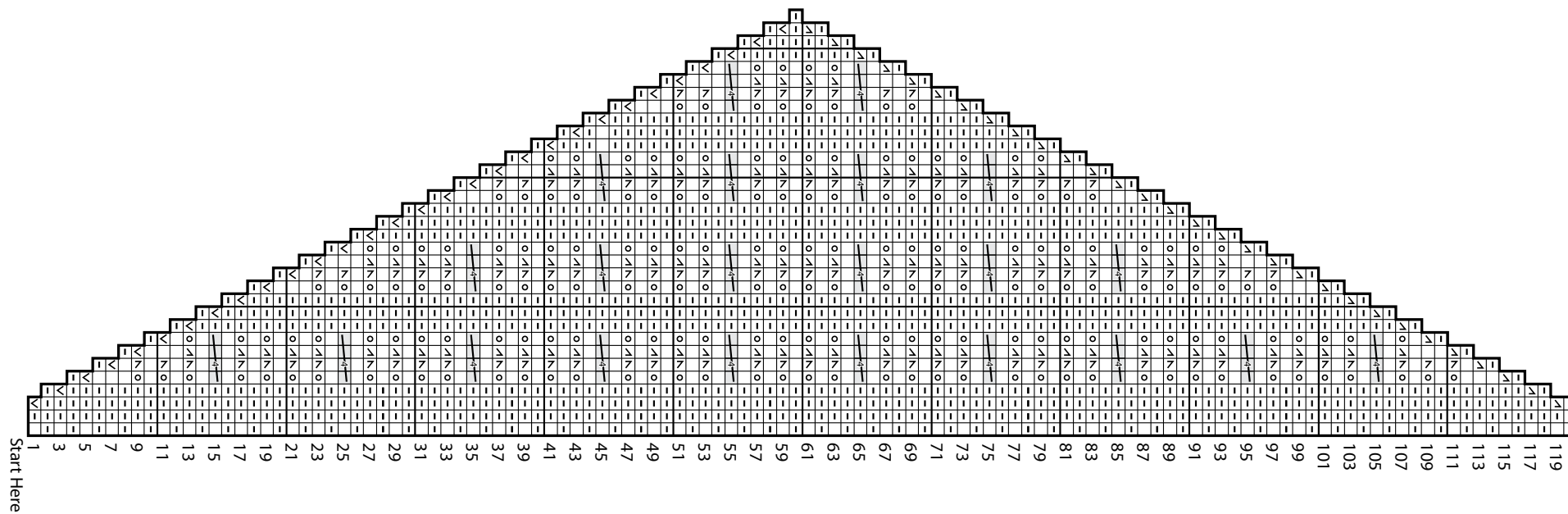
Knit 2 rows.

Cast off knitwise.**

Top edging: Work as for Bottom edging, picking up sts evenly across top edge.

Side edging: With RS facing, pick up and knit 246 sts evenly across side edge.

Rep from ** to ** as given for Bottom edging.



Key

- = Knit on RS rows. Purl on WS rows.
- ◻ = Purl on RS rows. Knit on WS rows.
- ⊙ = Yo
- ⊞ = Ssk
- ⊠ = K2tog
- ⊞⊞ = C4B