



Little Girl Pink Baby Blanket

designed by Marlane DesChamps

FREE

X  INTERMEDIATE

SIMPLY SOFT®

DESCRIPTION SIZING

A timeless, soft pink baby blanket for any little girl.

Abbreviations

k2tog = Knit next 2 stitches together.

rep = repeat

ssk = Slip next 2 stitches knitwise one at a time. Pass them back onto left-hand needle, then knit through back loops together.

st(s) = stitch(es)

yo = yarn over the needle (makes 1 extra stitch)

Details & Instructions

MEASUREMENTS

Finished Measurements:

35"/89cm x
46"/117cm

MATERIALS

Simply Soft

Shade no longer available

Change Color Here ()

4

One circular size U.S. 7 (4.5mm) needle, 29"/73.5cm long or size needed to obtain gauge. Cable needle (cn). Yarn needle.

GAUGE

In Stockinette Stitch, 18 sts and 22 rows = 4"/10cm

INSTRUCTIONS

BLANKET

CO 145 sts loosely. Work back and forth in rows using circular needle.

Border:

Rows 1–5: Knit.

Row 6: K18, (kfb, k17) 6 times, kfb, k18—152 sts.

Body patt (multiple of 19 sts):

Row 7 (RS): K4, *k5, yo, ssk, k4, p2, k4, p2; rep from * to last 15 sts, k5, yo, ssk, k8.

Rows 8, 10, 12, and 14: K4, *p11, k2, p4, k2; rep from * to last 15 sts, p11, k4.

Row 9: K4, *k3, k2tog, yo, k1, yo, ssk, k3, p2, C4B, p2; rep from * to last 15 sts, k3, k2tog, yo, k1, yo, ssk, k7.

Row 11: K4, *k2, k2tog, yo, k3, yo, ssk, k2, p2, k4, p2; rep from * to last 15 sts, k2, k2tog, yo, k3, yo, ssk, k6.

Row 13: K4, *k1, k2tog, yo, k5, yo, ssk, k1, p2, C4B, p2; rep from * to last 15 sts, k1, k2tog, yo, k5, yo, ssk, k5.

Rep Rows 7–14 for cable and lace patt until piece measures approximately 45" from beg, ending with patt Row 14.

Border:

Next row (RS): K18, (k2tog, k17) 6 times, k2tog, k18—145 sts.

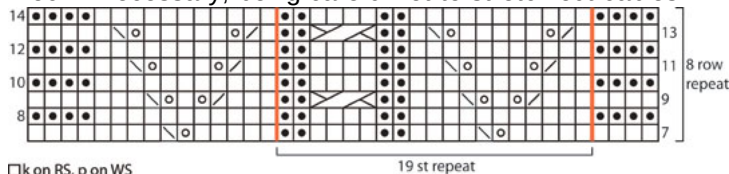
Knit 5 more rows.

BO all sts in knit.

FINISHING

Using yarn needle, weave in all loose ends.

Block if necessary, being careful not to stretch out cables.



□ k on RS, p on WS

□ p on RS, k on WS

○ yarn over

▤ k2tog

▤ ssk: sl, sl, knit

▤ C4B: Slip next 2 sts to cable needle, hold in back, k2, then k2 from cable needle