



KNIT | SKILL LEVEL: **INTERMEDIATE**

## ABBREVIATIONS

**Alt** = Alternate(ing)

**Approx** = Approximately

**Beg** = Beginning

**C4B** = Slip next 2 stitches onto cable needle and leave at back of work. K2, then K2 from cable needle

**Cont** = Continue(ity)

**K** = Knit

**K2tog** = Knit 2 stitches together

**Kfb** = Increase 1 stitch by knitting into front and back of next stitch.

**P** = Purl

**Pat** = Pattern

**Rep** = Repeat

**RS** = Right side

**Ssk** = Slip next 2 stitches knitwise one at a time. Pass them back onto left-hand needle, then knit through back loops together

**St(s)** = Stitch(es)

**WS** = Wrong side

**Yo** = Yarn over

## MEASUREMENTS

Approx 35 x 46" [89 x 117 cm].

## GAUGE

18 sts and 24 rows = 4" [10 cm] in stocking st.

## INSTRUCTIONS

Cast on 145 sts. **Do not** join. Working back and forth across needle in rows, proceed as follows:

**1st to 5th rows:** Knit.

**6th row:** (WS). K18. (Kfb. K17) 6 times. Kfb. K18. 152 sts.

Work in Cable and Lace Pat as follows:

See Chart on page 2.

**1st row:** (RS). K4. \*K5. yo. ssk. K4. P2. K4. P2. Rep from \* to last 15 sts. K5. yo. ssk. K8.

**2nd and alt rows:** K4. \*P11. K2. P4. K2. Rep from \* to last 15 sts. P11. K4.

**3rd row:** K4. \*K3. K2tog. yo. K1. yo. ssk. K3. P2. C4B. P2. Rep from \* to last 15 sts. K3. K2tog. yo. K1. yo. ssk. K7.

## MATERIALS

**Caron® Simply Soft®** (6 oz /170 g; 315 yds/288 m)

Purple (39781)

**4 balls**

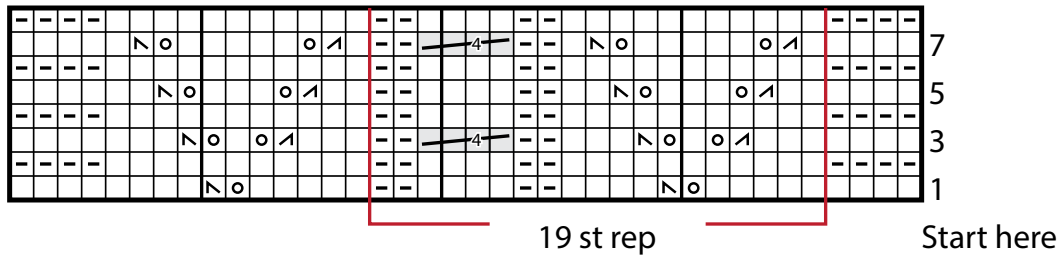
Size U.S. 8 (5 mm) Susan Bates® Silvalume® circular knitting needle 29" [73.5 cm] long **or size needed to obtain gauge.** Susan Bates® cable needle.

**5th row:** K4. \*K2. K2tog. yo. K3. yo. ssk. K2. P2. K4. P2. Rep from \* to last 15 sts. K2. K2tog. yo. K3. yo. ssk. K6.

**7th row:** K4. \*K1. K2tog. yo. K5. yo. ssk. K1. P2. C4B. P2. Rep from \* to last 15 sts. K1. K2tog. yo. K5. yo. ssk. K5.

**8th row:** As 2nd row.  
These 8 rows form Cable and Lace Pat. Cont in pat until work from beg measures approx 45" [114.5 cm], ending on 8th row.

**Next row:** (RS). K18. (K2tog. K17) 6 times. K2tog. K18. 145 sts.  
Knit 5 rows.  
Cast off.



**Key**

- ☐ = Knit on RS rows. Purl on WS rows.
- ◻ = Purl on RS rows. Knit on WS rows
- ⊠ = K2tog
- ⊞ = ssk
- ⊚ = yo
- ⊞⊞⊞⊞ = C4B

