

CARON® ST LAWRENCE KNIT YOKE SWEATER



MATERIALS

Caron® x Pantone™ (3.5 oz/100 g; 127 yds/116 m)

Sizes XS/M L/XL 2/3XL 4/5XL

Main Color (MC)

Dane Gray (01003) 8 10 11 12 braids

Contrast A

Elephant Gray (01006) 2 3 3 3 braids

Contrast B

Summer Forest (01015) 1 2 2 2 braid(s)

Sizes U.S. 9 (5.5 mm) and U.S. 10 (6 mm) circular knitting needles 29" [75 cm] long. Set of 4 sizes U.S. 9 (5.5 mm) and U.S. 10 (6 mm) double-pointed knitting needles **or size needed to obtain gauge.** Stitch markers. 4 st holders.

MC - Dane Gray

1 - 11-4001	2 - 13-4105	3 - 14-4203	4 - 18-0000	5 - 19-0000
6 - 15-5706	7 - 16-5806	8 - 13-0442	9 - 19-0516	10 - 19-0315



KNIT | SKILL LEVEL: **INTERMEDIATE**

ABBREVIATIONS

Beg = Beginning

Cont = Continue

Inc = Increase 1 stitch by knitting into front and back of next stitch

K = Knit

K2tog = Knit next 2 stitches together

P = Purl

PM = Place marker

Rep = Repeat.

Rnd(s) = Round(s)

St(s) = Stitch(es)

SIZES

To fit bust measurement

XS/M 28-38" [71-96.5 cm]

L/XL 40-46" [101.5-117 cm]

2/3XL 48-54" [122-137 cm]

4/5XL 56-62" [142-157.5 cm]

Finished bust

XS/M 40" [101.5 cm]

L/XL 48" [122 cm]

2/3XL 57" [145 cm]

4/5XL 65" [165 cm]

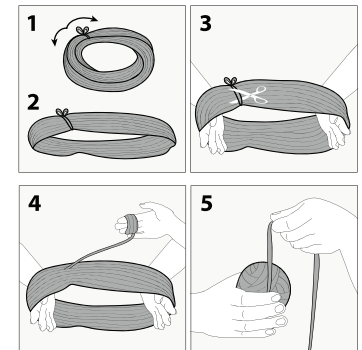
GAUGE

15 sts and 20 rows = 4" [10 cm] in stocking st with larger needles.

INSTRUCTIONS

Notes:

- Before working with Caron® x Pantone™ multi-shade yarn braid, separate each color link and wind into 5 separate balls.



CARON® ST LAWRENCE KNIT YOKE SWEATER

The instructions are written for smallest size. If changes are necessary for larger size(s) the instructions will be written thus (). Numbers for each size are shown in the same color throughout the pattern. When only one number is given in black, it applies to all sizes.

Notes:

- Body and Sleeves are worked in the round from lower edge up separately then joined into Yoke.
- When working from chart, carry yarn not in use loosely across WS of work. The colors are never twisted around one another.

BODY

With MC and smaller circular needle, cast on **148** (**180-212-244**) sts. Join in rnd. PM on first st.
1st rnd: *K2. P2. Rep from * around.
 Rep last rnd of (K2. P2) ribbing for 4" [10 cm], inc **2** (**0-2-0**) sts evenly across last rnd. **150** (**180-214-244**) sts.

Change to larger circular needle and knit in rnds until work from beg measures **16** (**16½-17-17**)" [**40.5** (**42-43-43**) cm].

Next rnd: With MC, *K**8** (**10-12-12**). Slip these **8** (**10-12-12**) sts onto a st holder. K**67** (**80-95-108**). Rep from * once more. Leave these sts on a length of yarn.

SLEEVES

With MC and set of 4 smaller double-pointed needles, cast on **40** (**44-48-48**) sts. Divide sts onto 3 needles. Join in rnd. PM on first st.
 Proceed in (K2. P2) ribbing as given for Body for 2 rnds.

Change to larger set of needles and knit in rnds, inc 1 st at beg and end of next and every following **8th** (**6th-4th-2nd**) rnd to **50** (**56-60-58**) sts, then every following **10th** (**8th-6th-4th**) rnd to **52** (**60-68-76**) sts.

Cont even until work from beg measures 17½" [44.5 cm].

Next rnd: K**4** (**5-6-7**). Slip last **8** (**10-12-14**) sts onto a safety pin for armhole. K**44** (**50-56-62**). Break yarn leaving an end 12" [30 cm] long for grafting at underarm. Leave sts on a spare needle.

YOKE

*With MC and larger circular needle, K**44** (**50-56-62**) for Sleeve. PM after last st. K**67** (**80-95-108**) for Body. PM after last st. Rep from * once more. **222** (**260-302-340**) sts. K**44** (**50-56-62**). Mark last st as end of rnd.

Next rnd: K**6** (**0-6-0**). *K**27** (**26-37-34**). M1. Rep from * to end of rnd. **230** (**270-310-350**) sts.

Work in Chart to end of chart, reading rnds from **right to left** and noting 10-st rep will be worked **23** (**27-31-35**) times. **92** (**108-124-140**) sts.
 Chart is shown on page 3.

Next rnd: With MC, K**2** (**8-4-0**). *K**7** (**8-10-12**). K2tog. Rep from * to end of rnd. **82** (**98-114-130**) sts.
 Knit **0** (**2-1-1**) rnd(s) even.

Next rnd: K**2** (**8-4-0**). *K**6** (**7-9-11**). K2tog. Rep from * to end of rnd. **72** (**88-104-120**) sts.
 Knit **0** (**2-1-1**) rnd(s) even.

Sizes L/XL, 2/3XL and 4/5XL only:
Next rnd: K(**8-4-0**). *K(**6-9-10**). K2tog. Rep from * to end of rnd. (**78-94-110**) sts.
 Knit (**0-1-2**) rnd(s) even.

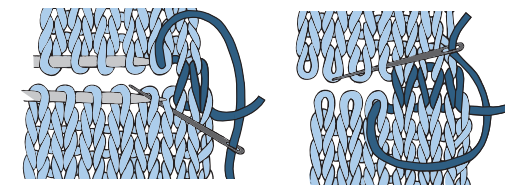
Sizes 2/3XL and 4/5XL only:
Next rnd: K(**4-0**). *K(**8-9**). K2tog. Rep from * to end of rnd. (**84-100**) sts.
 Knit (**1-2**) rnd(s) even.

Size 4/5XL only: Next rnd: *K8. K2tog. Rep from * to end of rnd. 90 sts.

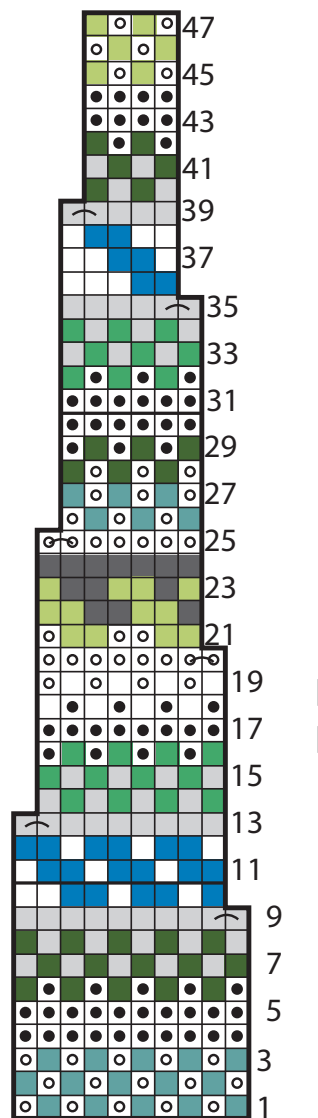
All sizes: 72 (**78-84-90**) sts.
Collar: Change to smaller set of double-pointed needles and with MC, work 5" [12.5 cm] in (K2. P2) ribbing as given for Body. Cast off in rib.

Graft underarm seams.

Grafting



CARON® ST LAWRENCE KNIT YOKE SWEATER



Start Here

Key

- Color 1
- Color 2
- Color 3
- Color 4 and MC
- Color 5
- Color 6
- Color 7
- Color 8
- Color 9
- Color 10
- +

 With Color 2, K2tog
- O

 With Color 4, K2tog

