



 KNIT | SKILL LEVEL: INTERMEDIATE

ABBREVIATIONS

Approx = Approximate(ly)

Beg = Begin(ning)

Cont = Continue(ity)

Inc = Increase(ing)

K = Knit

K1tbl = Knit next stitch through back loop

K2tog = Knit 2 stitches together

Pat = Pattern

P = Purl

P1tbl = Purl next stitch through back loop

P2tog = Purl next 2 stitches together

P2togtbl = Purl next 2 stitches together through back loops

Pat = Pattern

Rem = Remain(ing)

Rep = Repeat

RS = Right side

Ssk = Slip next 2 stitches knitwise one at a time. Pass them back on to left-hand needle, then knit through back loops together

St(s) = Stitch(es)

WS = Wrong side

MATERIALS

Caron® x Pantone™ (3.5 oz/100 g; 127 yds/116 m)

Sizes **XS/S M L XL 2/3 XL 4/5 XL**

Version 1:

Main Color (MC) Coconut Cream (01001) **3 3 4 4 5 5 braids**

Contrast 1 Frozen Berry (01022) **2 2 2 2 3 3 braids**

Contrast 2 Summer Forest (01015) **2 2 2 2 3 3 braids**

Contrast 3 Spicy Blooms (01014) **2 2 2 2 3 3 braids**

Contrast 4 Purple Pops (01017) **2 2 2 2 3 3 braids**

Version 2:

Main Color (MC): Coconut Cream (01001) **3 3 4 4 5 5 braids**

Contrast Tree Rings (01026) **8 8 8 8 9 9 braids**

Sizes U.S. 9 (5.5 mm) knitting needles and U.S. 10 (6 mm) knitting needles **or size needed to obtain gauge.** 2 stitch holders.

Version 1

MC - 11-4302	13-4103	17-5034	17-4540	18-2929
19-4044	15-5706	16-5806	13-0442	19-0516
19-0315	17-1452	17-1462	17-1723	18-1561
18-2436	13-3406	16-3307	18-3838	16-0737
19-4324				

Version 2

MC - 11-4302				
14-1210	13-0000	16-0906	17-0000	19-0000

SIZES

To fit bust measurement

XS/S	28-34" [71-86.5 cm]
M	36-38" [91.5-96.5 cm]
L	40-42" [101.5-106.5 cm]
XL	44-46" [112-117 cm]
2/3 XL	48-54" [122-137 cm]
4/5 XL	56-62" [142-157.5 cm]

Finished bust

XS/S	44" [112 cm]
M	48" [122 cm]
L	52" [132 cm]
XL	56" [142 cm]
2/3 XL	64" [162.5 cm]
4/5 XL	68" [173 cm]

GAUGE

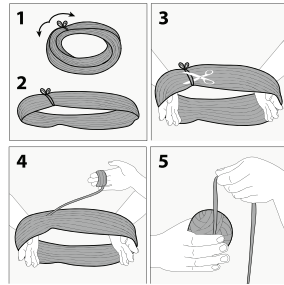
15 sts and 20 rows = 4" [10 cm] with larger needles in stocking stitch.

INSTRUCTIONS

The instructions are written for smallest size. If changes are necessary for larger size(s) the instructions will be written thus (.). When only one number is given, it applies to all sizes.

Notes:

- Before working with Caron® x Pantone™ multi-shade yarn braid, separate each color link and wind into 5 separate balls for each braid.



- See charts for designation of each shade from multi-color braids.
- Due to finite amount of yarn in each shade, pattern gauge must be matched to ensure successful results

Intarsia Note: When working from charts, use separate ball of yarn for each separate area of color in the design. To change colors, wind the 2 colors around each where they meet, on WS, to avoid a hole.

BACK

With MC and smaller needles, cast on **82 (90-98-104-120-128) sts.

1st row: (RS). *K1tbl. P1. Rep from * to end of row.

2nd row: *K1. P1tbl. Rep from * to end of row.

Rep last 2 rows ribbing for 2" [5 cm], ending on a WS row and inc 1 st in center of last row. **83** (91-99-105-121-129) sts.

Change to larger needles and work Back Chart of choice in stocking st until row **64** (64-64-64-72-72) of Chart is complete, reading **knit** rows from **right** to left and **purl** rows from **left** to right.

Version 1: Charts I and II shown on pages 5 and 6.

Version 2: Charts VII and VIII shown on pages 11 and 12.

Shape armholes: Keeping cont of Chart, cast off **4** (4-6-6-8-8) sts at beg of next 2 rows. **75** (83-87-93-105-113) sts.**

Cont Chart until row **104** (104-114-114-124-124) is complete.

Shape shoulders: Keeping cont of Chart, cast off **10** (12-12-9-11-13) sts at beg of next **2** (2-2-4-4-4) rows, then **11** (13-13-10-12-12) sts at beg of following 2 rows. Slip rem **33** (33-37-37-37-37) sts onto st holder.

FRONT

Work from ** to ** as given for Back, working Front Chart of choice.

Version 1: Charts III and IV shown on pages 7 and 8.

Version 2: Charts VII and VIII shown on pages 11 and 12.

Cont Chart until row **100** (100-110-112-122-122) of chart is complete.

Shape neck: Next row: (RS). **K25** (29-29-32-38-42). **Turn.** Leave rem sts on st holder.

Sizes XS/S, M, and L only: Left Neck shaping: Next row: (WS). P2. P2tog. Purl to end of row.

Next row: Knit to last 4 sts. K2tog. K2.

Next row: P2. P2tog. Purl to end of row.

Next row: Cast off **10** (12-12) sts. Knit to last 4 sts. K2tog. K2.

Next row: Purl.
Cast off rem **11** (13-13) sts.

Sizes XL, 2/3XL, and 4/5XL only:
Left Neck shaping: Next row: (WS). P2. P2tog. Purl to end of row.

Next row: Cast off **9** (11-13) sts. Knit to last 4 sts. K2tog. K2.

Next row: P2. P2tog. Purl to end of row.

Next row: Cast off **9** (11-13) sts. Knit to last 4 sts. K2tog. K2.

Next row: Purl.
Cast off rem **10** (12-12) sts.

Sizes XS/S, M, and L only: Right Neck shaping: With RS facing, slip next **25** (25-29) sts onto st holder. Rejoin yarn to rem sts and knit to end of row (keeping cont of Chart).

Next row: (WS). Purl to last 4 sts. P2togtbl. P2.

Next row: K2. ssk. Knit to end of row.

Next row: Purl to last 4 sts. P2togtbl. P2.

Next row: K2. ssk. Knit to end of row.

Next row: Cast off **10** (12-12) sts. Purl to end of row.

Next row: Knit.
Cast off rem **11** (13-13) sts.

Sizes XL, 2/3XL, and 4/5XL only:
Right Neck shaping: With RS facing, slip next 29 sts onto st holder. Rejoin yarn to rem sts and knit to end of row (keeping cont of Chart).

Next row: (WS). Purl to last 4 sts. P2togtbl. P2.

Next row: K2. ssk. Knit to end of row.

Next row: Cast off **9** (11-13) sts. Purl to last 4 sts. P2togtbl. P2.

Next row: K2. ssk. Knit to end of row.

Next row: Cast off **9** (11-13) sts. Purl to end of row.

Next row: Knit.
Cast off rem **10** (12-12) sts.

LEFT SLEEVE
With MC and smaller needles, cast on **42** (48-52-56-56-56) sts.

1st row: (RS). *K1tbl. P1. Rep from * to end of row.

2nd row: *K1. P1tbl. Rep from * to end of row.

Rep last 2 rows ribbing for 1½" [4 cm], ending on a WS row.

Change to larger needles and work Left Sleeve Chart of choice in stocking st, inc 1 st at each end of every **8th** (12th-6th-8th-6th-6th) row **9** (6-6-9-11-11) times. **60** (60-64-74-78-78) sts.

Version 1: Chart V shown on page 9.

Version 2: Left and Right Sleeves are both worked from Chart IX shown on page 13.

Cont working Chart until row **88** (88-82-82-78-78) of chart is complete.

Cast off.

RIGHT SLEEVE

Work as for Left Sleeve, working Right Sleeve Chart of choice.

Version 1: Chart VI shown on page 10.

Version 2: Left and Right Sleeves are both worked from Chart IX shown on page 13.

FINISHING

Collar: Sew right shoulder seam. With RS facing and smaller needles, pick up and knit 8 sts down left front neck edge. **K25** (25-29-29-29-29) from Front st holder. Pick up and knit 8 sts

up right front neck edge. **K33** (33-37-37-37-37) from Back st holder. **74** (74-82-82-82-82) sts.

Next row: (WS) *K1. P1tbl. Rep from * to end of row.

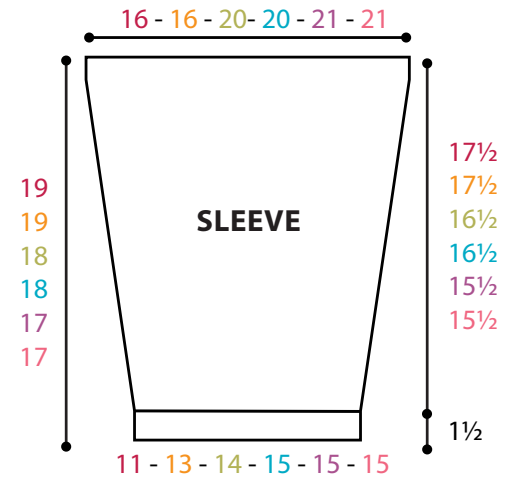
2nd row: *K1. P1tbl. Rep from * to end of row.

Rep last 2 rows ribbing until Collar measures 3" [7.5 cm] ending on a RS row.

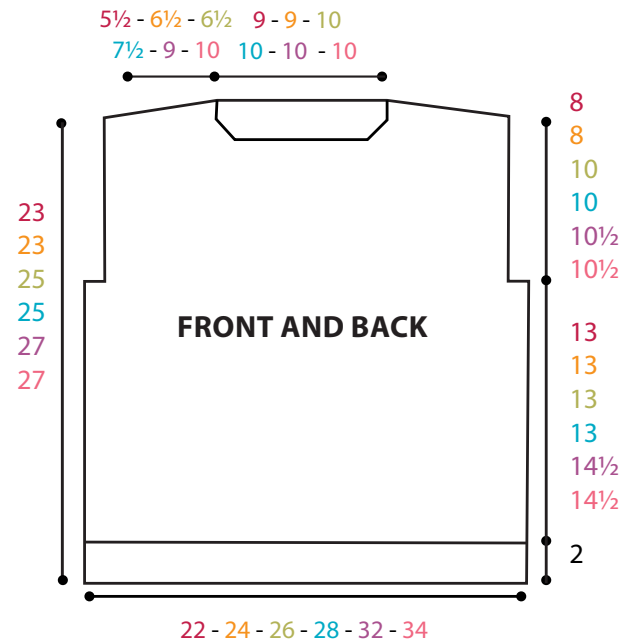
Cast off loosely in ribbing.

Sew left shoulder and Collar seam.

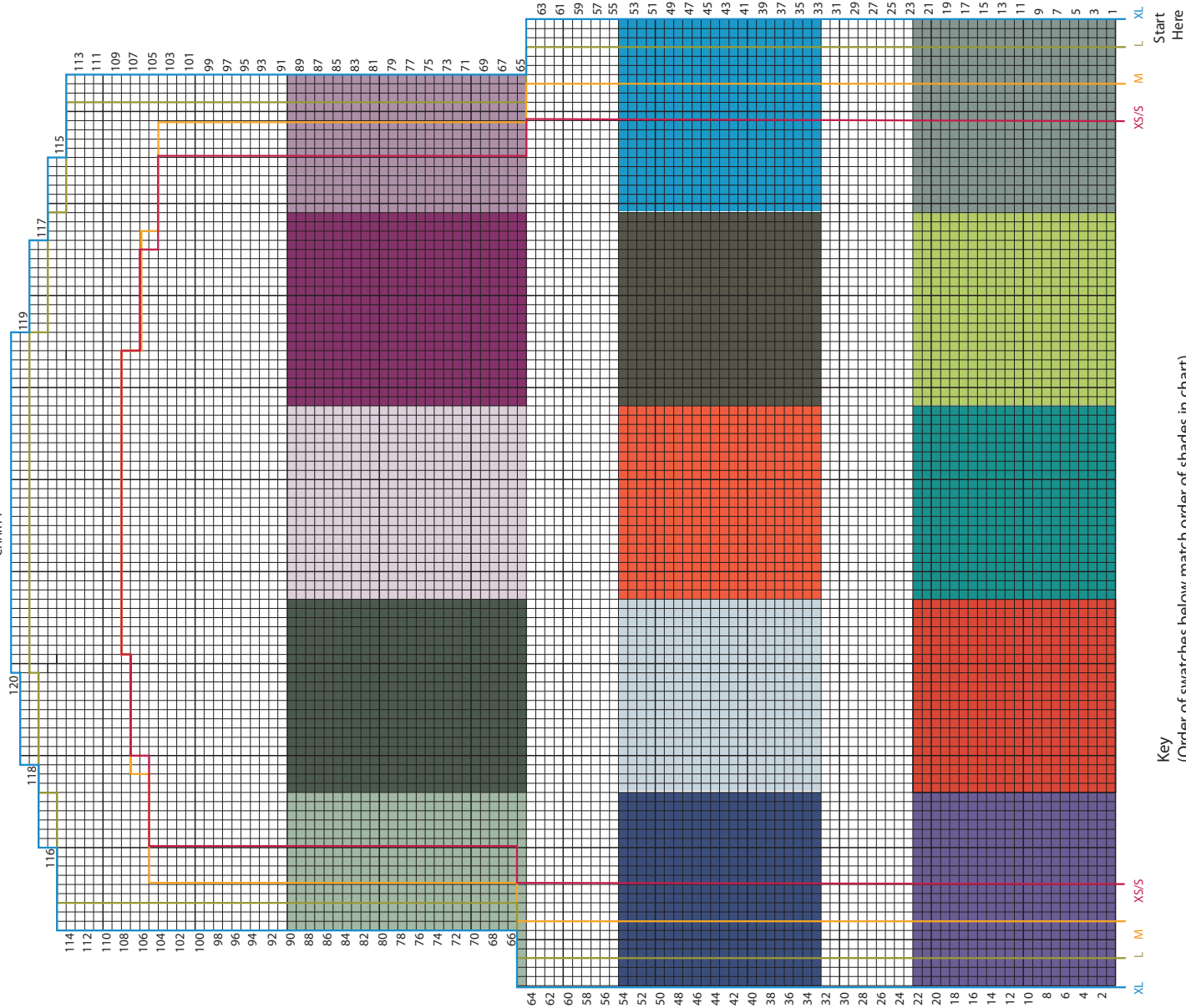
VERSION 1



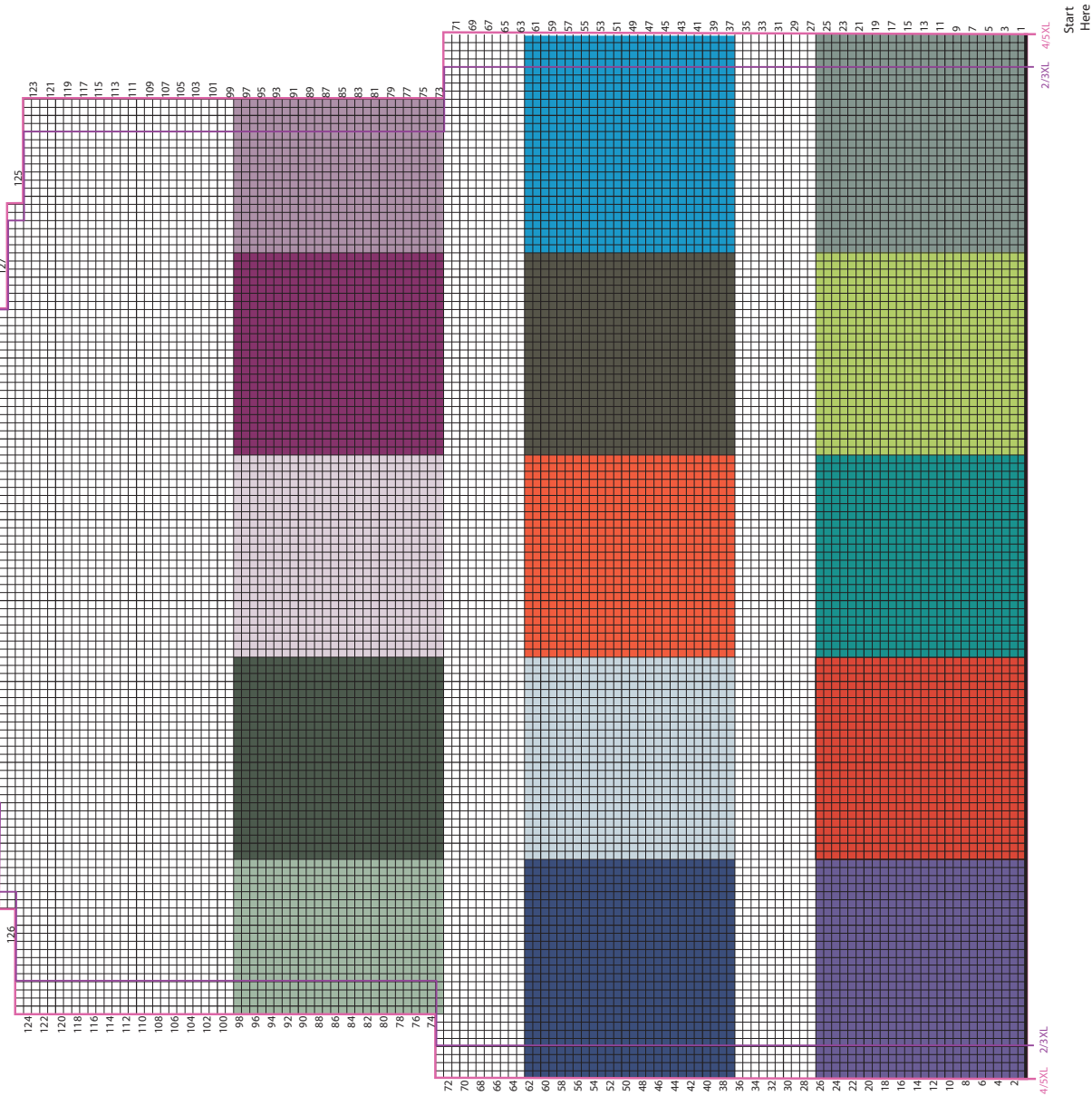
VERSION 2

















VERSION 1
BACK
XS/S-M-L-XL
CHART 1

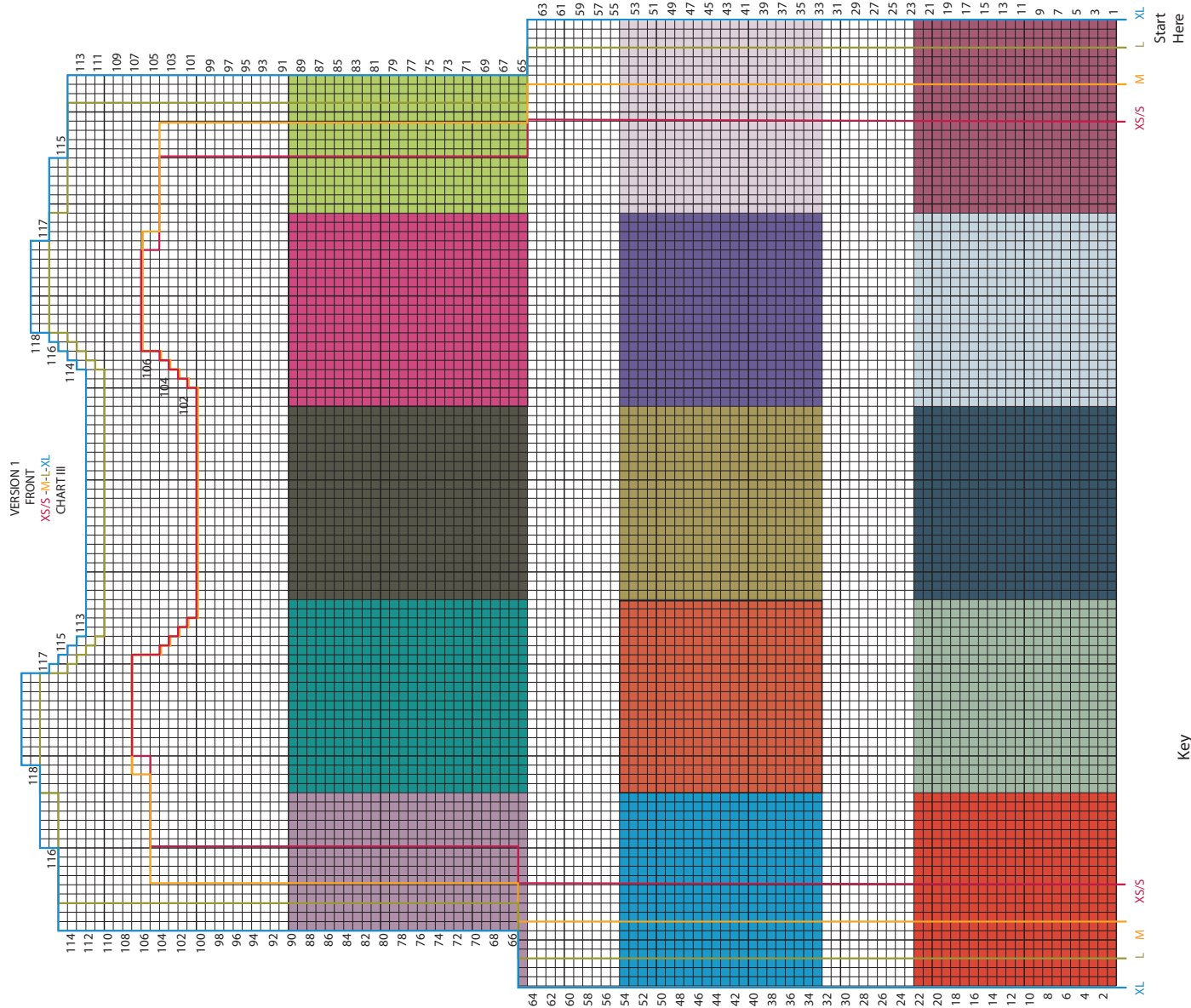


VERSION 1
BACK 2/3 - 4/5XL
CHART II



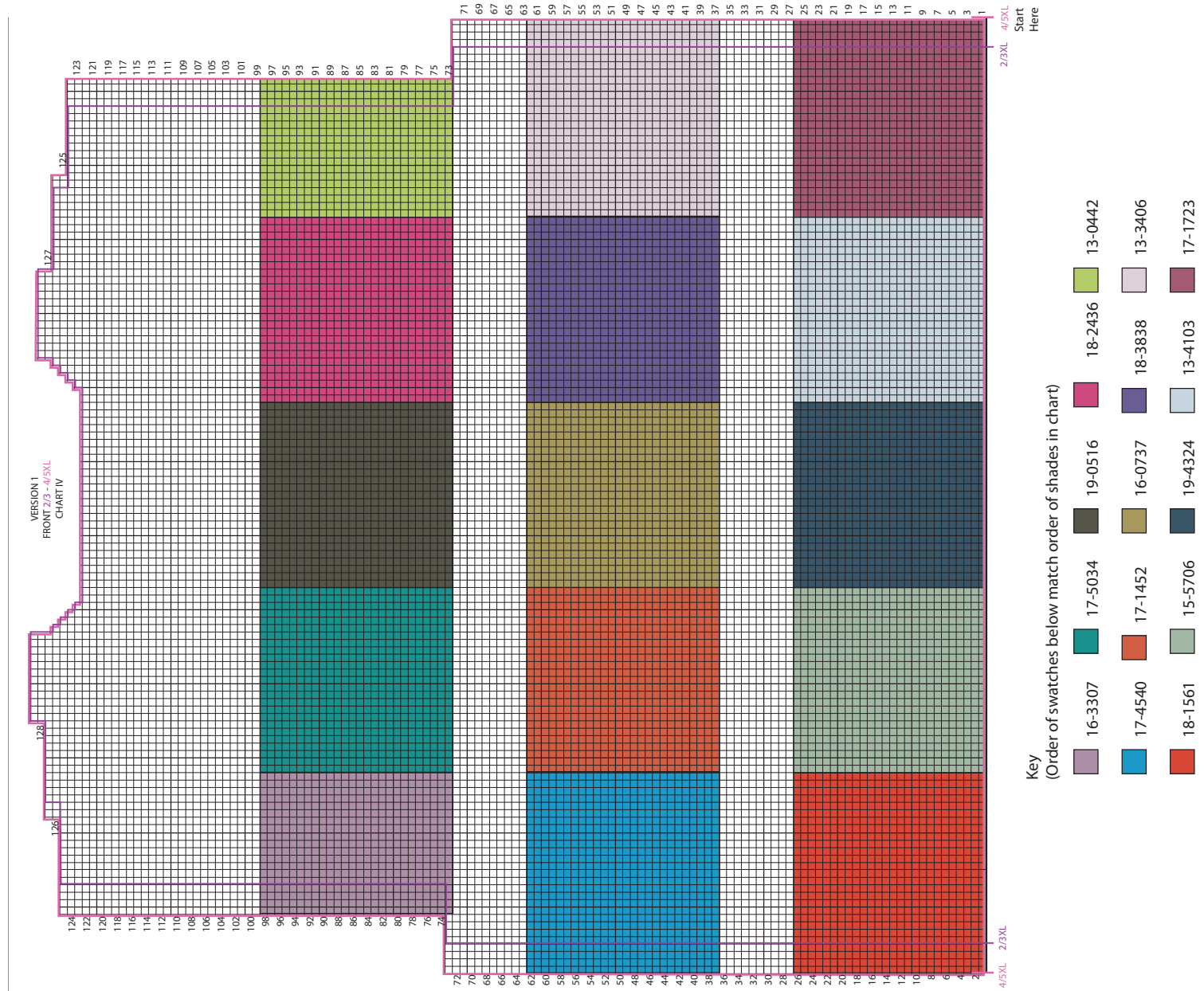
Key
(Order of swatches below match order of shades in chart)

-  15-5706
-  19-0315
-  13-3406
-  18-2929
-  16-3307
-  19-4044
-  13-4103
-  17-1452
-  19-0516
-  17-4540
-  18-3838
-  18-1561
-  17-5034
-  13-0442
-  16-5806

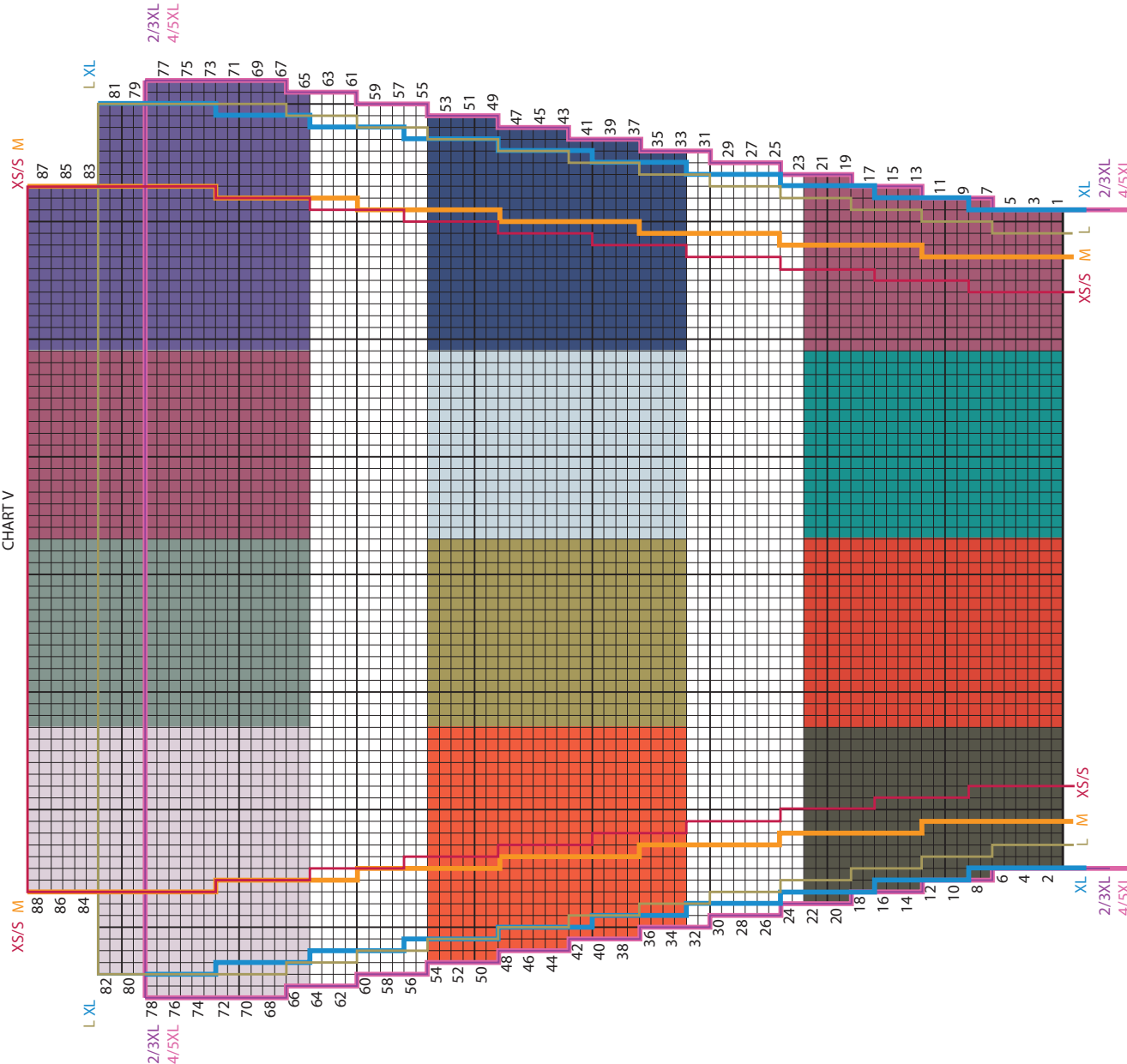


Key
(Order of swatches below match order of shades in chart)

- | | | | | | | | |
|--|---------|--|---------|--|---------|--|---------|
| | 16-3307 | | 17-5034 | | 19-0516 | | 13-0442 |
| | 17-4540 | | 17-1452 | | 16-0737 | | 18-3838 |
| | 18-1561 | | 15-5706 | | 19-4324 | | 13-4103 |
| | 18-2436 | | 17-1723 | | | | |



VERSION 1
LEFT SLEEVE
CHART V
XS/S - M - L - XL 2/3 - 4/5XL

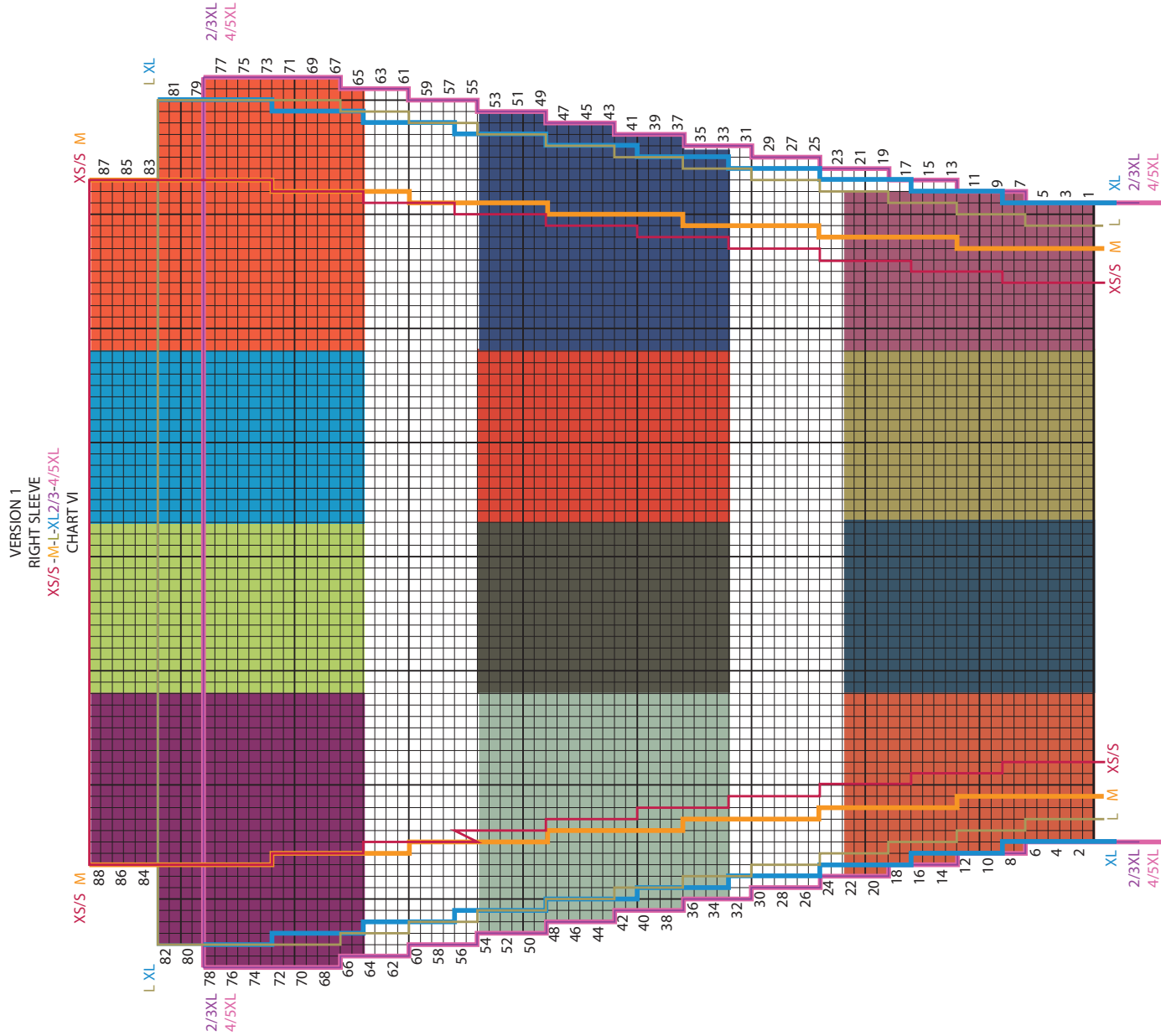


Start Here

Key

(Swatches below match order of shades in chart)

- 13-3406
- 14-1452
- 19-0516
- 16-5806
- 16-0737
- 18-1561
- 18-5806
- 17-1723
- 16-0737
- 17-5034
- 18-3838
- 19-4044
- 17-1723

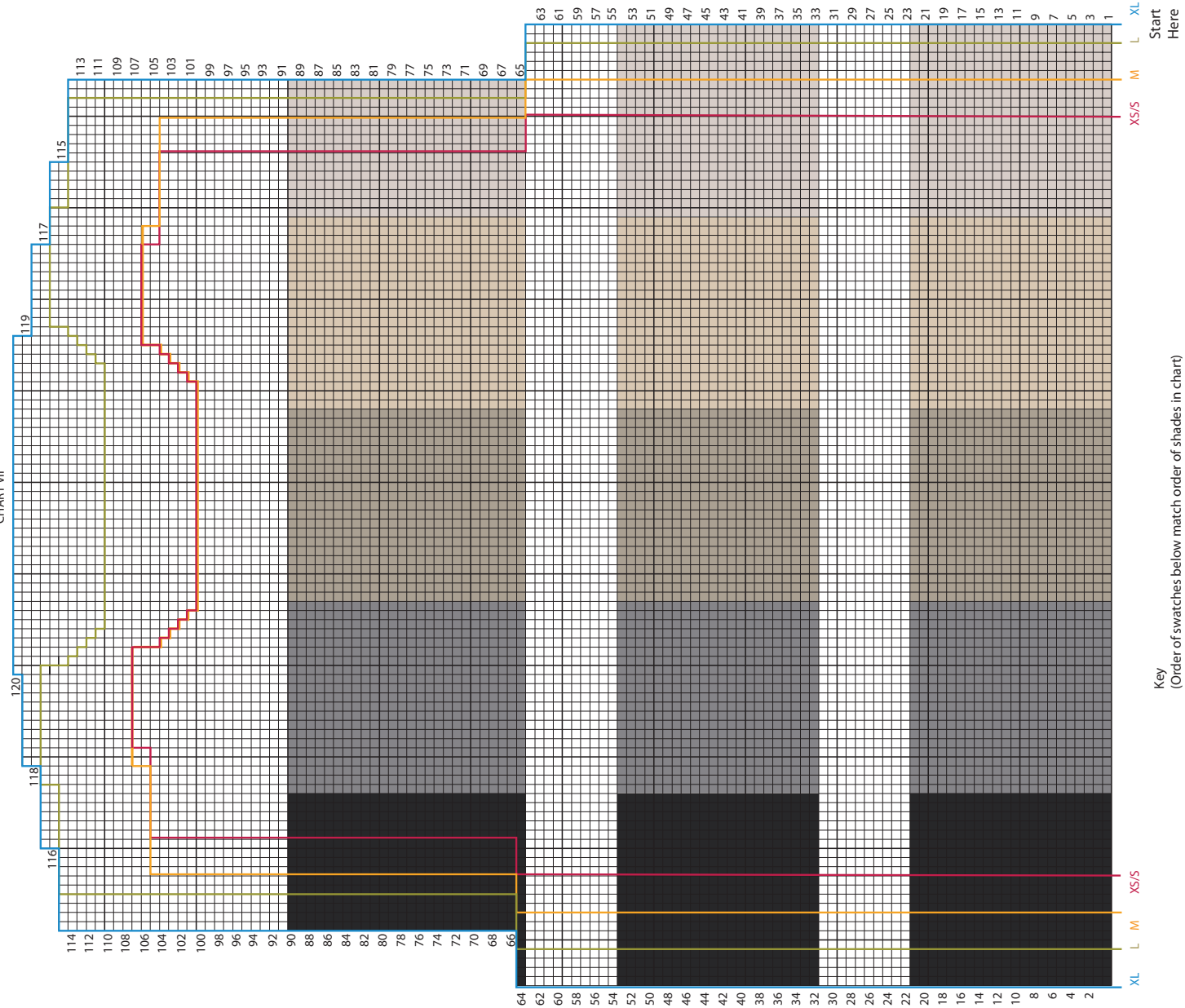


Start Here

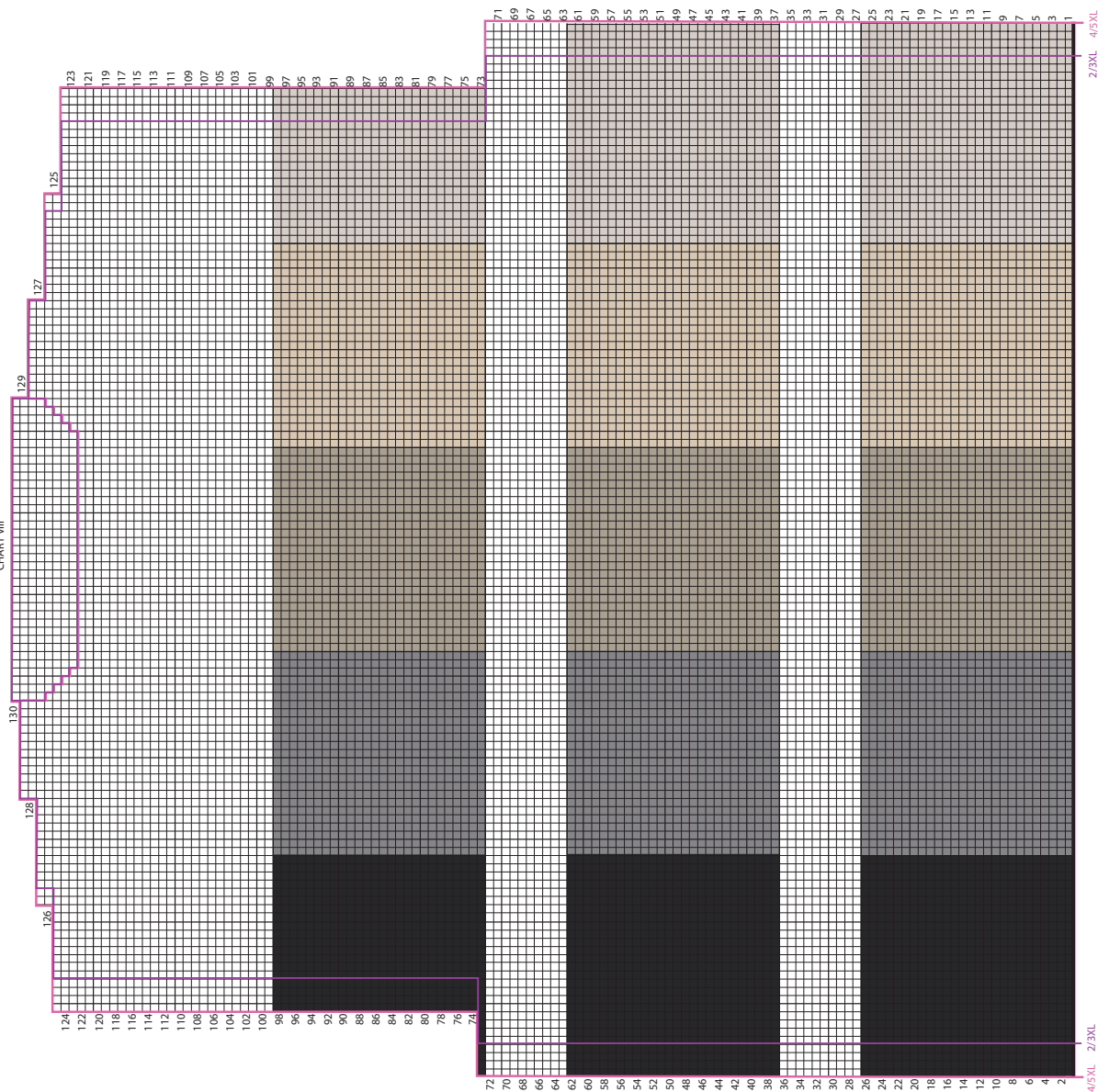
Key
(Order of swatches below match order of shades in chart)

- 18-2929
- 13-0442
- 17-4540
- 17-1462
- 15-5706
- 19-4324
- 18-1561
- 16-0737
- 17-1452
- 19-4044
- 17-1723

VERSION 2
BACK AND FRONT
XS/S - M - L - XL
CHART VII



VERSION 2
BACK AND FRONT
2/3 - 4/5XL
CHART VIII



Key

(Order of swatches below match order of shades in chart)

- 19-0000
- 17-0000
- 16-0906
- 14-1210
- 13-0000

