



KNIT | SKILL LEVEL: EASY

ABBREVIATIONS

Alt = Alternate(ing)

Approx = Approximately

Beg = Begin(ning)

K = Knit

K2tog = Knit next 2 stitches together

P = Purl

P2sso = Pass 2 slipped stitches over

PM = Place marker

Rep = Repeat

RS = Right side

Sl1Pwyib = Slip next stitch purlwise with yarn in back of work

Sl2K = Slip next 2 stitches as if to knit.

Ssk = Slip next 2 stitches one at a time. Pass them back onto left-hand needle, then knit through back loops together

St(s) = Stitch(es)

Tog = Together

WS = Wrong side

Yo = Yarn over

MEASUREMENTS

Approx 44" [112 cm] wide x 31¼" [79.5 cm] long.

GAUGE

11 sts and 14 rows = 4" [10 cm] in stocking st.

INSTRUCTIONS

LEFT PANEL

Left Back Section

See Diagram on page 4.

**Cast on 55 sts.

Knit 2 rows, noting 1st row is RS.

1st row: (RS). Sl1Pwyib. (K8. K2tog. yo. K1. yo. ssk. K3) 3 times. K6.

2nd and alt rows: (WS). Sl1Pwyib. Knit to end of row.

3rd row: Sl1Pwyib. (K7. K2tog. yo. K3. yo. ssk. K2) 3 times. K6.

5th row: Sl1Pwyib. (K6. K2tog. yo. K5. yo. ssk. K1) 3 times. K6.

MATERIALS

Caron® Anniversary Cakes™ (35.3 oz/1000 g; 1061 yds/970 m)

Birch (47026)

1 ball or 1061 yds/970 m

Size U.S. 11 (8 mm) Susan Bates® knitting needles **or size needed to obtain gauge.** Susan Bates® yarn needle. Susan Bates® stitch markers.

7th row: Sl1Pwyib. (K5. K2tog. yo. K7. yo. ssk) 3 times. K6.

9th row: Sl1Pwyib. K1. (K3. K2tog. yo. K9 . yo. ssk.) 3 times. K5.

11th row: Sl1Pwyib. K3. (K2tog. yo. K11 . yo. ssk. K1) 3 times. K3.

13th row: Sl1Pwyib. K2. K2tog. yo. (K13. yo. Sl2K. P1. P2sso. yo) twice. K13. yo. ssk. K3.

15th row: Sl1Pwyib. K3. (yo. ssk. K11. K2tog. yo. K1) 3 times. K3.

17th row: Sl1Pwyib. K4. (yo. ssk. K9. K2tog. yo. K3) 3 times. K2.

19th row: Sl1Pwyib. K5. (yo. ssk. K7. K2tog. yo. K5) 3 times. K1.

21th row: Sl1Pwyib. K6. (yo. ssk. K5. K2tog. yo. K7) 3 times.

23th row: Sl1Pwyib. K7. (yo. ssk. K3. K2tog. yo. K9) twice. yo. ssk. K3. K2tog. yo. K8.

25th row: Sl1Pwyib. K8. (yo. ssk. K1. K2tog. yo. K11) twice. yo. ssk. K1. K2tog. yo. K9.

27th row: Sl1Pwyib. K9. (yo. Sl2K. K1. P2sso. yo. K13) twice. yo. Sl2K. K1. P2sso. yo. K10.

28th row: As 2nd row.

Rep these 28 rows for pat until work from beg measures approx 31" [78.5 cm], ending on a 28th row.**

Left Neck Shaping

1st row: (RS). Cast off first 4 sts (st on needle counts as first st). K7. (yo. ssk. K11. K2tog. yo. K1) twice. yo. ssk. K9. 51 sts.

2nd and alt rows: (WS). Sl1Pwyib. Knit to end of row.

3rd row: Sl1Pwyib. K1. ssk. K5. (yo. ssk. K9. K2tog. yo. K3) twice. yo. ssk. K8. 50 sts.

5th row: Sl1Pwyib. K1. ssk. K5. (yo. ssk. K7. K2tog. yo. K5) twice. yo. ssk. K7. 49 sts.

7th row: Sl1Pwyib. K1. ssk. K5. (yo. ssk. K5. K2tog. yo. K7) twice. yo. ssk. K6. 48 sts.

9th row: Sl1Pwyib. K1. ssk. K5. (yo. ssk. K3. K2tog. yo. K9) twice. yo. ssk. K5. 47 sts.

10th row: As 2nd row. PM on st at end of row.

Proceed to Left Front Section:

1st row: (RS). Sl1Pwyib. K8. (yo. ssk. K1. K2tog. yo. K11) twice. yo. ssk. K4.

2nd and alt rows: (WS). Sl1Pwyib. Knit to end of row.

3rd row: Sl1Pwyib. K9. (yo. Sl2K. K1. P2sso. yo. K13) twice. yo. ssk. K3.

5th row: Sl1Pwyib. K8. (K2tog. yo. K1. yo. ssk. K11) twice. K2tog. yo. K4.

7th row: Sl1Pwyib. K7. (K2tog. yo. K3. yo. ssk. K9) twice. K2tog. yo. K5.

9th row: Sl1Pwyib. K6. (K2tog. yo. K5. yo. ssk. K7) twice. K2tog. yo. K6.

11th row: Sl1Pwyib. K5. (K2tog. yo. K7. yo. ssk. K5) twice. K2tog. yo. K7.

13th row: Sl1Pwyib. K4. (K2tog. yo. K9. yo. ssk. K3) twice. K2tog. yo. K8.

15th row: Sl1Pwyib. K3. (K2tog. yo. K11. yo. ssk. K1) twice. K2tog. yo. K9.

17th row: Sl1Pwyib. K2. K2tog. yo. (K13. yo. Sl2K. K1. P2sso. yo) twice. K10.

19th row: Sl1Pwyib. K3. (yo. ssk. K11. K2tog. yo. K1) twice. yo. ssk. K9.

21st row: Sl1Pwyib. K4. (yo. ssk. K9. K2tog. yo. K3) twice. yo. ssk. K8.

23rd row: Sl1Pwyib. K5. (yo. ssk. K7. K2tog. yo. K5) twice. yo. ssk. K7.

25th row: Sl1Pwyib. K6. (yo. ssk. K5. K2tog. yo. K7) twice. yo. ssk. K6.

27th row: Sl1Pwyib. K7. (yo. ssk. K3. K2tog. yo. K9) twice. yo. ssk. K5.

29th row: As 1st row.

30th row: As 2nd row.

Rep 3rd to 30th rows for pat until work from marked row measures approx 31" [78.5 cm], ending on a 29th row.

Knit 2 rows. Cast off knitwise.

RIGHT PANEL

See Diagram on page 5.

Right Back Section

Work from ** to ** as given for Left Back Section.

Right Neck Shaping

1st row: (RS). Sl1Pwyib. K8. (K2tog. yo. K1. yo. ssk. K11) twice. K2tog. yo. K12.

2nd row: (WS). Cast off first 4 sts (st on needle counts as first st). Knit to end of row. Turn. 51 sts.

3rd row: Sl1Pwyib. K7. (K2tog. yo. K3. yo. ssk. K9) twice. K2tog. yo. K5. K2tog. K2. 50 sts.

4th and alt rows: Sl1Pwyib. Knit to end of row.

5th row: Sl1Pwyib. K6. (K2tog. yo. K5. yo. ssk. K7) twice. K2tog. yo. K5. K2tog. K2. 49 sts.

7th row: Sl1Pwyib. K5. (K2tog. yo. K7. yo. ssk. K5) twice. K2tog. yo. K5. K2tog. K2. 48 sts.

9th row: Sl1Pwyib. K4. (K2tog. yo. K9. yo. ssk. K3) twice. K2tog. yo. K5. K2tog. K2. 47 sts.

10th row: As 2nd row. PM on st at end of row.

Right Front Section

1st row: (RS). Sl1Pwyib. K3. K2tog. yo. (K11. yo. ssk. K1. K2tog. yo) twice. K9.

2nd and alt rows: Sl1Pwyib. Knit to end of row.

3rd row: Sl1Pwyib. K2. K2tog. yo. (K13. yo. Sl2K. K1. P2sso. yo) twice. K10.

5th row: Sl1Pwyib. K3. yo. ssk. (K11. K2tog. yo. K1. yo. ssk) twice. K9.

7th row: Sl1Pwyib. K4. yo. ssk. (K9. K2tog. yo. K3. yo. ssk) twice. K8.

9th row: Sl1Pwyib. K5. yo. ssk. (K7. K2tog. yo. K5. yo. ssk) twice. K7.

11th row: Sl1Pwyib. K6. yo. ssk. (K5. K2tog. yo. K7. yo. ssk) twice. K6.

13th row: Sl1Pwyib. K7. yo. ssk. (K3. K2tog. yo. K9. yo. ssk) twice. K5.

15th row: Sl1Pwyib. K8. yo. ssk. (K1. K2tog. yo. K11. yo. ssk) twice. K4.

17th row: Sl1Pwyib. K9. yo. Sl2K. K1. P2sso. yo. K13. yo. Sl2K. K1. P2sso. yo. K12. ssk. yo. K4.

19th row: Sl1Pwyib. K8. (K2tog. yo. K1. yo. ssk. K11) twice. K2tog. yo. K4.

21st row: Sl1Pwyib. K7. (K2tog. yo. K3. yo. ssk. K9) twice. K2tog. yo. K5.

23rd row: Sl1Pwyib. K6. (K2tog. yo. K5. yo. ssk. K7) twice. K2tog. yo. K6.

25th row: Sl1Pwyib. K5. (K2tog. yo. K7. yo. ssk. K5) twice. K2tog. yo. K7.

27th row: Sl1Pwyib. K4. (K2tog. yo. K9. yo. ssk. K3) twice. K2tog. yo. K8.

29th row: As 1st row.

30th row: As 2nd row.

Rep 3rd to 30th rows until work from marked row measures approx 30" [76 cm], ending on a 29th row.

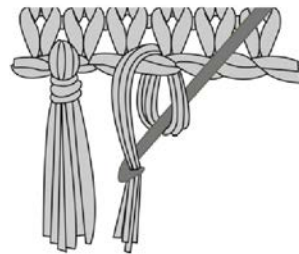
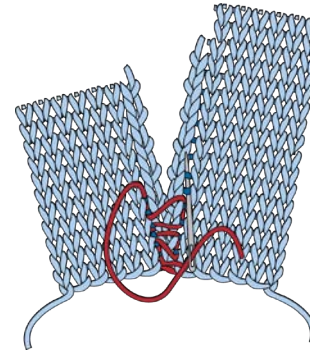
Knit 2 rows. Cast off knitwise.

FINISHING

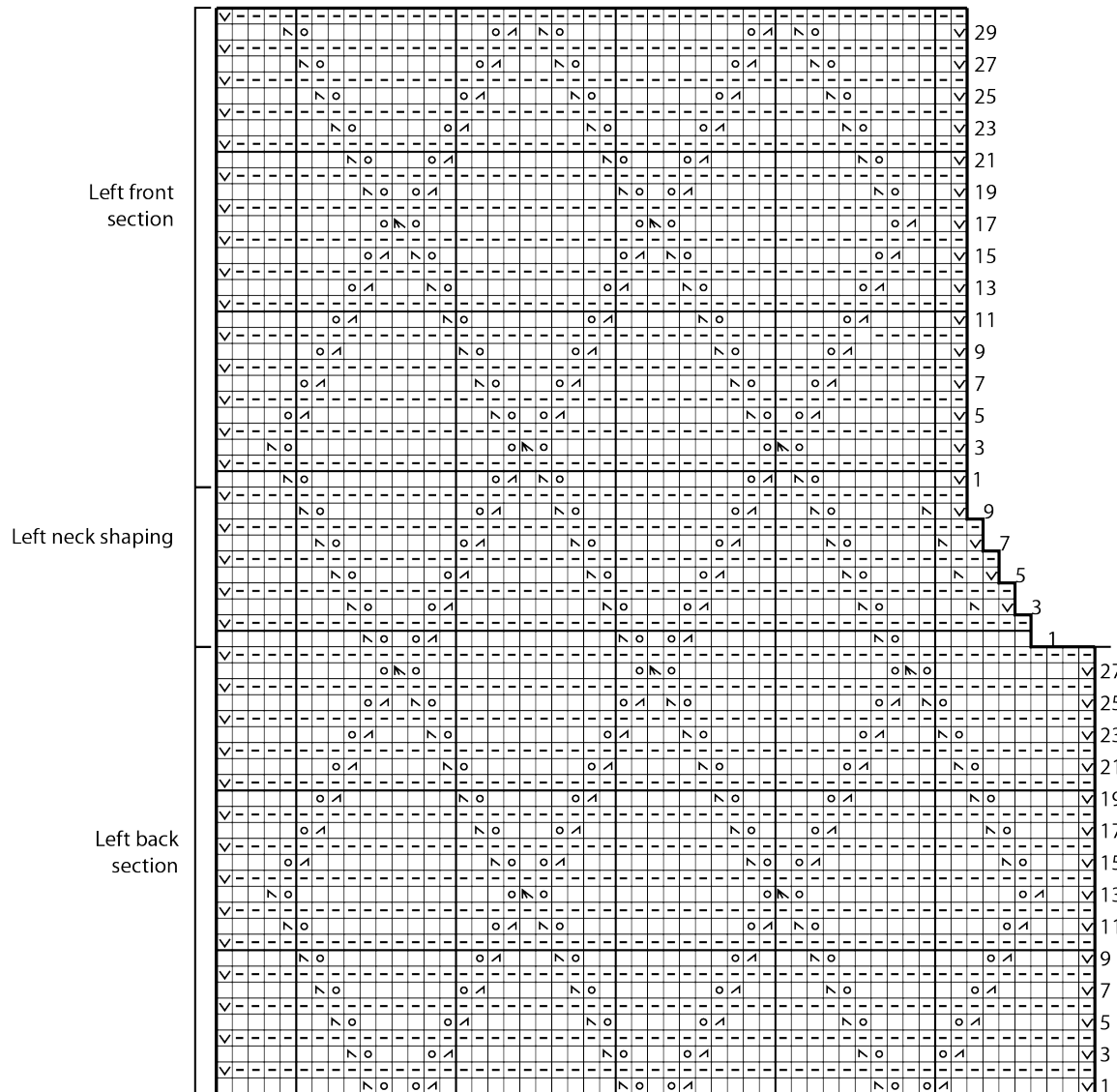
Using Mattress stitch, seam Ruana tog at center back from bottom of Panels to cast-off row from Neck shaping section.

Cut lengths of yarn 12" [30.5 cm] long. Taking 3 strands tog, knot into fringe evenly across lower edge of Ruana as shown in photo.

MATTRESS STITCH



Left Panel

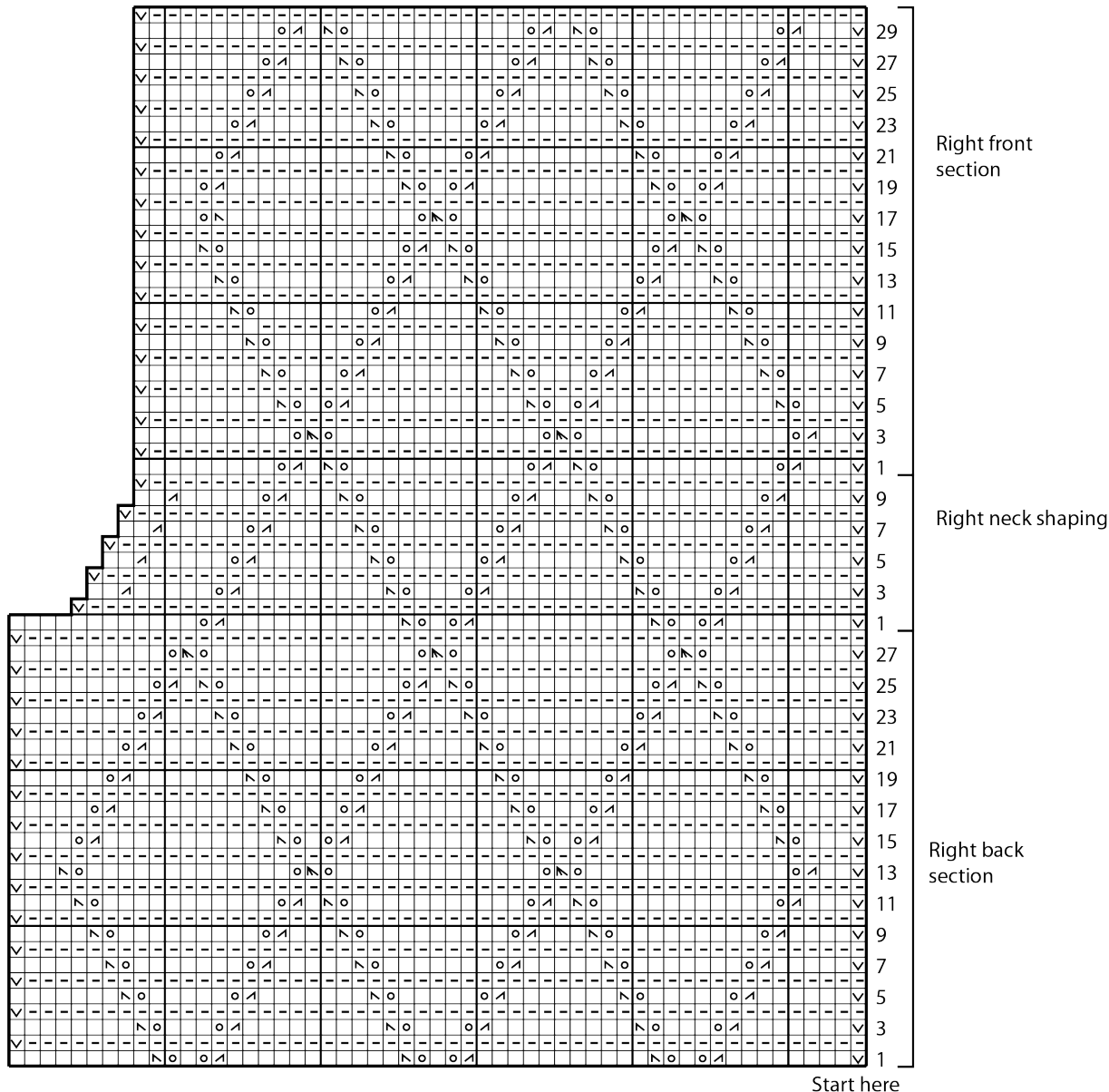


Key

- ☐ = Knit on RS
- ◻ = Knit on WS
- ⊙ = yo
- ⊞ = ssk
- ⊠ = K2tog
- ⊞ = S12K. P2sso.
- ⊞ = S11Pwyib

Start here

Right Panel



Start here