



MATERIALS

Caron® Cakes™ (7.1 oz/200 g; 383 yds /350 m)

Contrast A Pistachio (17020) **2 balls**

Contrast B Strawberry Trifle (17026) **2 balls**

Size U.S 8 (5 mm) knitting needles **or size needed to obtain gauge.**
Yarn needle.

ABBREVIATIONS

Alt = Alternat(e)(ing)

Approx =

Approximately

Beg = Begin(ning)

K = Knit

Rep = Repeat

Sl1Pwyib = Slip next
stitch purlwise with
yarn at back of work

Sl1Pwyif = Slip next
stitch purlwise with
yarn at front of work

St(s) = Stitch(es)

Yb = Bring yarn to
back of work

Yf = Bring yarn to
front of work



KNIT | SKILL LEVEL: **EASY**

SIZE

Approx 31" x 75" [78.5 cm x 190.5 cm].

GAUGE

15 sts and 26 rows = 4" [10 cm] in
garter st.

INSTRUCTIONS

With A, cast on 117 sts.

1st and 2nd rows: With A, knit.

3rd row: With B, K1. Sl1Pwyib. *K2.
Sl1Pwyib. Rep from * to last st. K1.

4th and alt rows: With same color
as previous row, knit all knit sts
and slip all slipped sts as follows:
yf. Sl1Pwyif. yb.

5th row: With A, knit.

7th row: With B, K1. Sl1Pwyib. *K1.
Sl1Pwyib. Rep from * to last st. K1.

9th row: With A, knit.

11th row: With B, knit.

13th row: With A, K1. Sl1Pwyib.
*K2. Sl1Pwyib. Rep from * to last
st. K1.

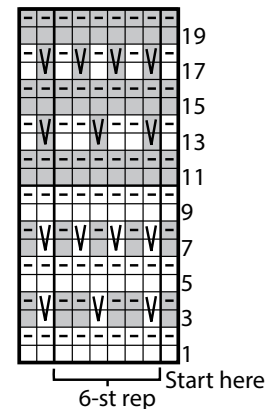
15th row: With B, knit.

17th row: With A, K1. Sl1Pwyib.
*K1. Sl1Pwyib. Rep from * to last
st. K1.

19th and 20th rows: With B, knit.

Rep 1st to 20th rows until work
from beg measures approx 75"
[190.5 cm], ending on a 10th or
20th row.

Cast off.



Key

□ = With A, knit on RS rows.

■ = With B, knit on RS rows.

□ = With A, purl on RS rows.

■ = With B, purl on RS rows.

□ = With A, Sl1Pwyib on RS rows.
yf. Sl1Pwyif. yb. on WS rows.

■ = With B, Sl1Pwyib on RS rows.
Sl1Pwyif on WS rows.