



Version 1



Version 2

MATERIALS

Caron® x Pantone™ Bamboo™ (3.5 oz /100 g; 180 yds/165 m)
Green Meadow (03042) **4 braids**

Size U.S. 7 (4.5 mm) circular knitting needle 29" [75 cm] long **or size needed to obtain gauge.** Stitch markers.

A - 14-4504 B - 15-4306 C - 15-6317 D - 15-5819 E - 17-5335

 **KNIT | SKILL LEVEL: INTERMEDIATE**

ABBREVIATIONS

Approx = Approximately

Cont = Continue(ity)

K = Knit

K2tog = Knit next 2 stitches together

PM = Place marker

Rem = Remaining

Rep = Repeat

RS = Right side

SM = Slip marker

Ssk = Slip next 2 stitches knitwise one at a time. Pass them back onto left-hand needle, then knit through back loops together

St(s) = Stitch(es)

WS = Wrong side

Yo = Yarn over

MEASUREMENTS

Approx 20" [51 cm] deep x 70" [178 cm] wide.

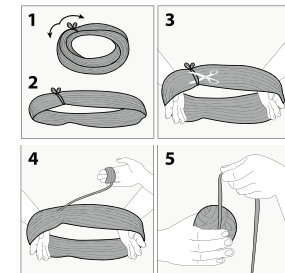
GAUGE

20 sts and 26 rows = 4" [10 cm] in stocking stitch.

INSTRUCTIONS

Notes:

- Before working with Caron® x Pantone™ Bamboo™ multi-shade yarn braid, separate each color link and wind into 5 separate balls.



- Each color link will be referenced by its Pantone # (see ball band)

- Designate each yarn ball Contrast, A, B, C, D and E as noted in Materials section (or as desired).
- Due to finite amount of yarn in each shade, pattern gauge must be matched to ensure successful results
- Move markers along work.

With A for Version 1 or with E for Version 2, cast on 53 sts.

Proceed in Stripe Pat as follows:

1st row: (RS). (K1. yo) twice. PM. K1. (yo. ssk) 24 times. PM. (yo. K1) twice.

2nd and alt rows: K1. Purl to last st. K1.

3rd row: (K1. yo) twice. K2tog. yo. SM. (K2tog. yo) 24 times K1. SM. yo. K1. yo. K2tog. yo. K1.

5th row: (K1. yo) twice. *ssk. yo.* Rep from * to * to first marker. SM. K1. (yo. ssk) 24 times. SM. yo. K1. yo. Rep from * to * to last st. K1.

7th row: (K1. yo) twice. *K2tog. yo.* Rep from * to * to first marker. SM. (K2tog. yo) 24 times. K1. SM. yo. K1. yo. Rep from * to * to last st. K1.

8th row: As 2nd row.

Rep 5th to 8th rows to form Eyelet Pat and 4 sets of increase rows. See Charts on page 3.

VERSION 1

With A, rep 5th to 8th rows for Eyelet Pat until 3 full links of A are used, ending on 8th row of pat.

Next 2 rows: With B, knit.

With B, rep 5th to 8th rows for Eyelet Pat until 4 full links of B are used, ending on 8th row of pat.

Next 2 rows: With C, knit.

With C, rep 5th to 8th rows for Eyelet Pat until 4 full links of C are used, ending on 8th row of pat.

Next 2 rows: With D, knit.

With D, rep 5th to 8th rows for Eyelet Pat until 4 full links of D are used, ending on 8th row of pat.

Next 2 rows: With E, knit.

With E, rep 5th to 8th rows for Eyelet Pat until 4 full links of E are used, ending on 8th row of pat.

With rem link of A proceed as follows:

1st row: (RS). K1. yo. Knit to first marker. yo. SM. Knit to next marker. SM. yo. Knit to last st. yo. K1.

2nd row: Knit.

Rep last 2 rows once more, ending on 1st row. Cast off knitwise (WS).

VERSION 2

With E, rep 5th to 8th rows for Eyelet Pat until 2 full links of E are used, ending on 8th row of pat.

Next 2 rows: With A, knit.

With D, rep 5th to 8th rows for Eyelet Pat until 2 full links of D are used, ending on 8th row of pat.

Next 2 rows: With A, knit.

With C, rep 5th to 8th rows for Eyelet Pat until 2 full links of C are used, ending on 8th row of pat.

Next 2 rows: With A, knit.

With B, rep 5th to 8th rows for Eyelet Pat until 2 full links of B are used, ending on 8th row of pat.

Next 2 rows: With A, knit.

With E, rep 5th to 8th rows for Eyelet Pat until rem 2 full links of E are used, ending on 8th row of pat.

Next 2 rows: With A, knit.

With D, rep 5th to 8th rows for Eyelet Pat until rem 2 full links of D are used, ending on 8th row of pat.

Next 2 rows: With A, knit.

With C, rep 5th to 8th rows for Eyelet Pat until rem 2 full links of C are used, ending on 8th row of pat.

Next 2 rows: With A, knit.

With B, rep 5th to 8th rows for Eyelet Pat until rem 2 full links of B are used, ending on 8th row of pat.

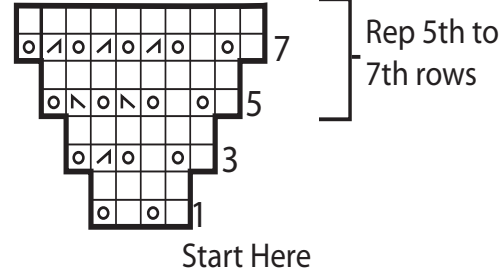
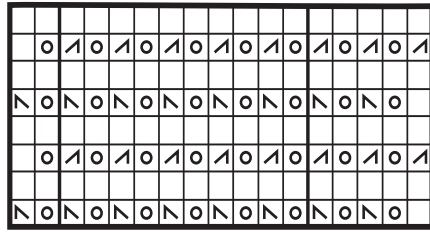
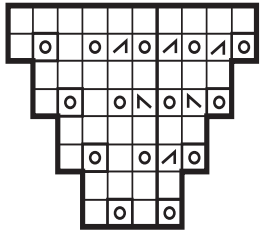
With A proceed as follows:

1st row: (RS). K1. yo. Knit to first marker. yo. SM. Knit to next marker. SM. yo. Knit to last st. yo. K1.

2nd row: Knit.

Rep last 2 rows once more, ending on 1st row.

Cast off knitwise (WS).



- Key
- Knit on RS rows. Purl on WS rows
 - ▤ K2tog
 - ▥ ssk
 - ⊠ yo

↑
PM

↑
PM

