



Version 2

Version 1

## MATERIALS

**Caron® x Pantone™ Bamboo™** (3.5 oz/100 g; 180 yds/165 m)  
Nautical (03041) **4 braids**

Size U.S. 7 (4.5 mm) circular knitting needle 29" [73.5 cm] long **or size needed to obtain gauge.** Stitch marker.

A - 11-0603

B - 16-4703

C - 18-1950

D - 19-1524

E - 19-4028



KNIT | SKILL LEVEL: **INTERMEDIATE**

## ABBREVIATIONS

**Alt** = Alternat(e)(ing)

**Approx** = Approximately

**Cont** = Continue(ity)

**Inc** = Increase(ing)

**K** = Knit

**K2tog** = Knit next 2 stitches together

**P** = Purl

**Pat** = Pattern

**PM** = Place marker

**Rep** = Repeat

**RS** = Right side

**SM** = Slip marker

**St(s)** = Stitch(es)

**WS** = Wrong side

**Yo** = Yarn over

## MEASUREMENTS

Approx 24" [61 cm] deep x 48" [122 cm] wide.

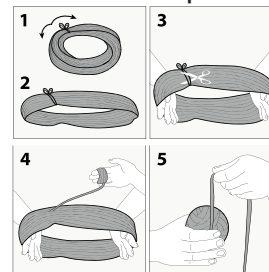
## GAUGE

20 sts and 26 rows = 4" [10 cm] in stocking st.

## INSTRUCTIONS

### Notes:

- Before working with Caron® x Pantone™ Bamboo™ multi-shade yarn braid, separate each color link and wind into 5 separate balls.



- Due to finite amount of yarn in each shade, pattern gauge must be matched to ensure successful results.

### Version 1

#### Stripe Pat

\*\*With A, work 4 rows.

With B, work 4 rows.\*\*

Work from \*\* to \*\* 7 times more

\*\*\*With D, work 10 rows.

With E, work 8 rows.

With C, work 10 rows.

With E, work 8 rows.\*\*\*

Work from \*\*\* to \*\*\* twice more.

These 158 rows form Stripe Pat.

## Version 2

### Stripe Pat

With A, work 56 rows.

\*\*With C, work 10 rows.

With B, work 8 rows.

With D, work 10 rows.

With E, work 8 rows.\*\*

Work from \*\* to \*\* twice more.

These 164 rows form Stripe Pat.

## Both Versions

With A, cast on 7 sts. See Chart on page 3.

**1st row:** (RS). K3. yo. K1. yo. K3. 9 sts.

**2nd row:** K3. Purl to last 3 sts. K3.

**3rd row:** K3. yo. K1. yo. PM. K1. yo. K1. yo. K3. 13 sts.

**4th row:** As 2nd row.

**5th row:** K3. yo. Knit to marker. yo. SM. K1. yo. Knit to last 3 sts. yo. K3. 17 sts.

**6th row:** As 2nd row.

First 6 rows of Stripe Pat are now complete. Keeping cont of Stripe Pat, rep 5th and 6th rows, inc 4 sts on next and every following alt row to 117 sts, ending on a WS row.

Proceed as follows: See Chart on page 3.

**1st row:** (RS). K3. yo. \*(K2tog) 3 times. (K1. yo) 6 times. (K2tog) 3 times. Rep from \* to 1 st before marker. K1. yo. SM. K1. yo. K1. \*\*(K2tog) 3 times. (yo. K1) 6 times. (K2tog) 3 times. Rep from \*\* to last 3 sts. yo. K3. 121 sts.

**2nd and alt rows:** K3. Purl to last 3 sts. K3.

**3rd row:** K3. yo. Knit to 1 st before marker. yo. SM. K1. yo. Knit to last 3 sts. yo. K3. 125 sts.

**5th row:** K3. yo. K2. \*(K2tog) 3 times. (K1. yo) 6 times. (K2tog) 3 times. Rep from \* to 3 sts before marker. K3. yo. SM. K1. yo. K3. \*\*(K2tog) 3 times. (yo. K1) 6 times. (K2tog) 3 times. Rep from \*\* to last 5 sts. K2. yo. K3. 129 sts.

**7th row:** As 3rd row. 133 sts.

**9th row:** K3. yo. K4. \*(K2tog) 3 times. (K1. yo) 6 times. (K2tog) 3 times. Rep from \* to 5 sts before marker. K5. yo. SM. K1. yo. K5. \*\*(K2tog) 3 times. (yo. K1) 6 times. (K2tog) 3 times. Rep from \*\* to last 7 sts. K4. yo. K3. 137 sts.

**11th row:** As 3rd row. 141 sts.

**12th row:** Knit.

**13th to 16th rows:** Rep 11th and 12th rows twice more. 149 sts.

**17th row:** As 11th row. 153 sts.

**18th and alt rows:** As 2nd row. 19th row: K3. yo. (K1. yo) 3 times. (K2tog) 6 times. \*(K1. yo) 6 times. (K2tog) 6 times. Rep from \* to 4 sts before marker. (K1. yo) 4 times. SM. K1. (yo. K1) 4 times. (K2tog) 6 times. \*\*(yo. K1) 6 times. (K2tog) 6 times. Rep from \* to last 6 sts. (yo. K1) 4 times. K2. 157 sts.

**21th row:** As 3rd row. 161 sts.

**23th row:** K3. yo. K3. (yo. K1) twice. yo. (K2tog) 6 times. \*(K1. yo) 6 times. (K2tog) 6 times. Rep from \* to 6 sts before marker. (K1. yo) 3 times. K3. yo. SM. K1. yo. K3. (yo. K1) 3 times. (K2tog) 6 times. \*\*(yo. K1) 6 times. (K2tog) 6 times. Rep from \*\* to last 8 sts. (yo. K1) 3 times. K2. yo. K3. 165 sts.

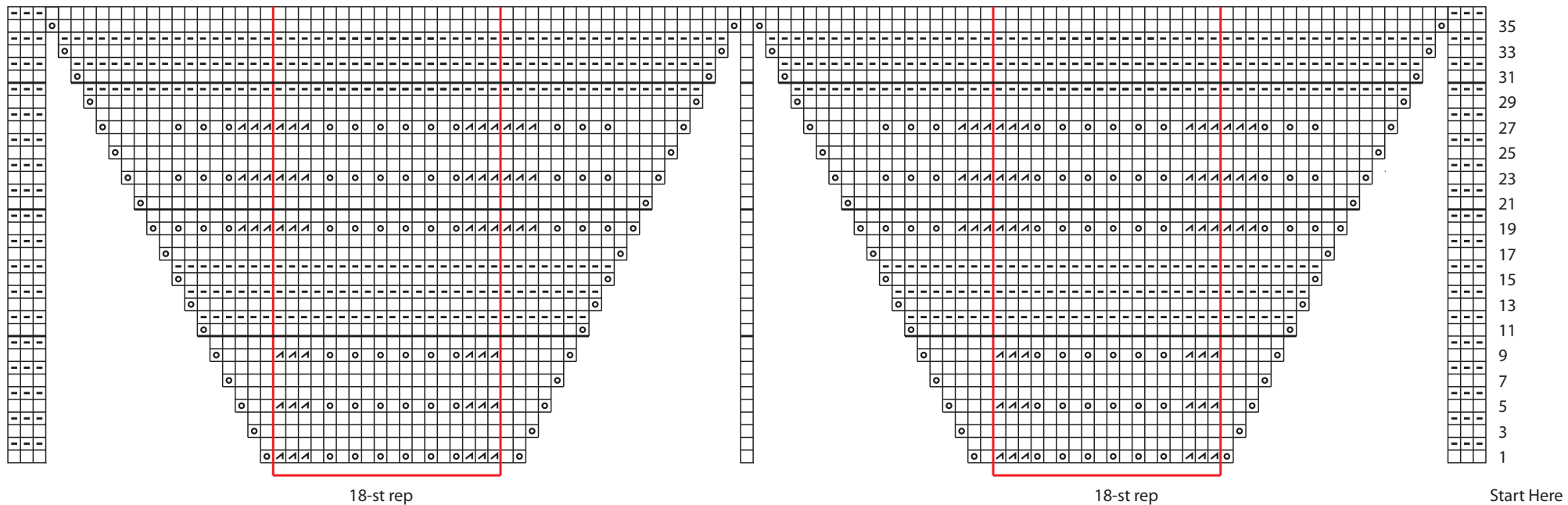
**25th row:** As 3rd row. 169 sts.

**27th row:** K3. yo. K5. (yo. K1) twice. yo. (K2tog) 6 times. \*(K1. yo) 6 times. (K2tog) 6 times. Rep from \* to 8 sts before marker. (K1. yo) 3 times. K5. yo. SM. K1. yo. K5. (yo. K1) 3 times. (K2tog) 6 times. \*\*(yo. K1) 6 times. (K2tog) 6 times. Rep from \*\* to last 10 sts. (yo. K1) 3 times. K4. yo. K3. 173 sts.

**29th to 36th rows:** Work as given for 11th to 18th rows. 189 sts.

These 36 rows form Old Shale Pat. Rep Old Shale Pat twice more, AT SAME TIME keeping cont of Stripe Pat. 333 sts.

Cast off knitwise.



## Key

- = Knit on RS; Purl on WS
- ▣ = Knit on WS; Purl on RS
- ⊙ = yo
- ⊠ = K2tog



Version 1



Version 2