



BUY·CARON·COM

Subscribe to Caron Connections, our free e-newsletter.

Enter your e-mail address

Subscribe

yarn free projects where to buy links learning contact us caron connections latch hook

Caron Yarns  
Simply Soft®  
Simply Soft® Eco

Simply Soft® Heathers  
Simply Soft® Light  
Simply Soft® Paints  
Simply Soft® Party

Natura®  
One Pound



Check out our newest yarns!

Caron Latch Hook Kits  
Shaggy  
Caron® Classics  
Natura®

## Celtic Cables Wrap

with

# SIMPLY SOFT



TECHNIQUE USED: Knit



INTERMEDIATE

### FINISHED MEASUREMENTS

Approx 14" x 60" [35.5 x 152.5 cm].

### MATERIALS

[Buy Now](#)

Caron International's Simply Soft Heather(100% Acrylic; 5oz):

WonderArt®  
Krafty Kids™



Woodland Heather (9503) 4 skeins

[Buy Now](#)

Size U.S. H/8 (5 mm) knitting needles **or**  
**size to obtain gauge.**

Cable needle  
Yarn needle

#### GAUGE

18 sts and 24 rows = 4" [10 cm] in  
stocking st.



[click image to enlarge](#)

 **Printer Friendly PDF**



#### ABBREVIATIONS

**Alt** = Alternate(ing)

**Approx** = Approximate(ly)

**Beg** = Begin(ing)

**C6B** = Slip next 3 stitches onto a cable needle and hold at back of work.

K3, then K3 from cable needle.

**C6F** = Slip next 3 stitches onto a cable needle and hold at front of work.

K3, then K3 from cable needle.

**Cont** = Continue(ity)

**Dec** = Decrease(ing)

**Inc** = Increase(ing)

**K** = Knit

**P** = Purl

**Pat** = Pattern

**Rep** = Repeat

**RS** = Right side

**St(s)** = Stitch(es)

**T7B** = Slip next 4 stitches onto a cable needle and hold at back of work.  
K3, then (P1, K3) from cable needle.

**T7F** = Slip next 3 stitches onto a cable needle and hold at front of work.  
(K3, P1), then K3 from cable needle.

**WS** = Wrong side

### **Stitches Used**

**Cable Panel A** (worked over 23 sts. See Chart A graphic below)

**1st row:** (RS). (K3, P1) 5 times. K3.

**2nd and alt rows:** (P3, K1) 5 times. P3.

**3rd row:** As 1st row.

**5th row:** (K3, P1) twice. T7F. (P1, K3) twice.

**7th row:** As 1st row.

**9th row:** K3. (P1, T7B) twice. P1. K3.

**11th row:** As 1st row.

**13th row:** (T7F, P1) twice. T7F.

**15th row:** As 1st row.

**17th row:** As 9th row.

**19th row:** As 1st row.

**21st row:** As 5th row.

**22nd row:** As 2nd row.

These 22 rows form Cable Panel Pat A.

**Cable Panel B** (worked over 12 sts. See Chart B graphic below).

**1st and 3rd rows:** (RS). P3. K6. P3.

**2nd and alt rows:** K3. P6. K3.

**5th row:** P3. C6F. P3.

**6th row:** As 2nd row.

These 6 rows form Cable Panel B.

**Cable Panel C** (worked over 12 sts. See Chart C graphic below).

**1st and 3rd rows:** (RS). P3. K6. P3.

**2nd and alt rows:** K3. P6. K3.

**5th row:** P3. C6B. P3.

**6th row:** As 2nd row.

These 6 rows form Cable Panel C.

## **INSTRUCTIONS**

Cast on 67 sts.

**\*\*1st row:** (RS). \*K3. P1. Rep from \* to last 3 sts. K3.

**2nd row:** \*P3. K1. Rep from \* to last 3 sts. P3.

Rep last 2 rows (P3. K1) ribbing until work from beg measures 8" [20 cm], ending on a 2nd row\*\* and inc 5 sts evenly across last row. 72 sts.

### **Proceed as follows:**

**1st row:** K3. Work 1st row of Cable Panel B. Work 1st row of Cable Panel A. Work 1st row of Cable Panel C. (K1. P1) 9 times. K4.

**2nd row:** K3. (K1. P1) 9times. K1. Work 2nd row of Cable Panel C. Work 2nd row of Cable Panel A. Work 2nd row of Cable Panel B. K3.

**3rd row:** K3. Work 3rd row of Cable Panel B. Work 1st row of Cable Panel A. Work 3rd row of Cable Panel C. (K1. P1) 9 times. K4.

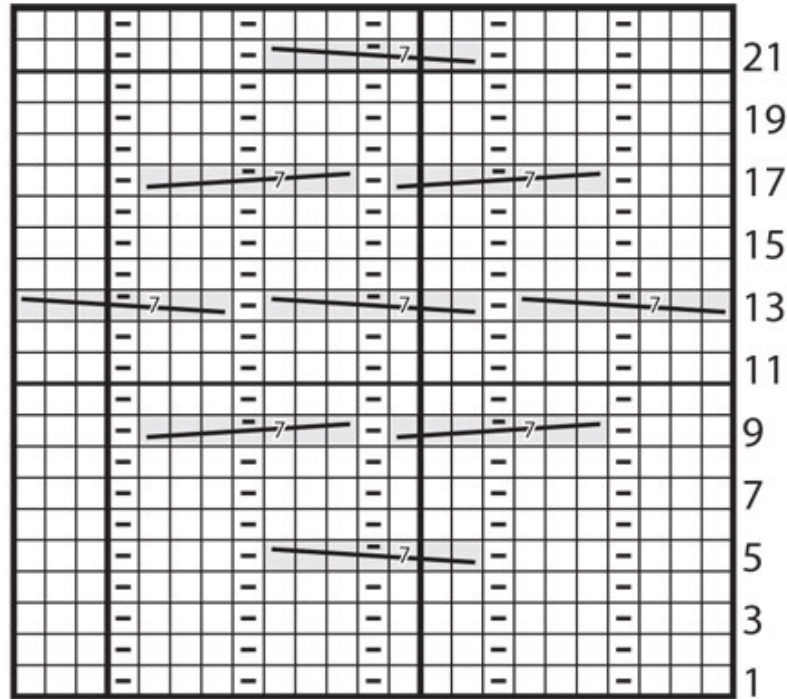
Cable Panels A, B, and C are now in position.

Cont in pat, having 3 sts garter st at each end until work from beg measures approx 52" [132 cm], ending on 2nd or 4th row of Cable Panel A, and dec 5 sts evenly across last row. 67 sts.

Work from \*\* to \*\* as given above.

Cast off in pat.

Chart A



Start Here

□ = Knit on RS rows. Purl on WS rows

▣ = Purl on RS rows. Knit on WS rows

 = T7B

 = T7F

CHART B

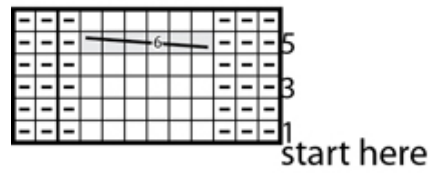
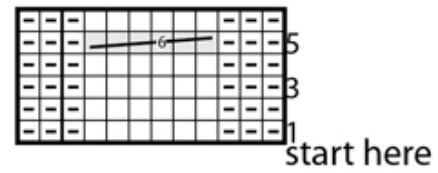


CHART C



☐ = Knit on RS rows, purl on WS rows.

◻ = Purl on RS rows, knit on WS rows.

 = C6B

 = C6F

|| Yarns || Free Projects || Where to Buy || Links || Learning || Contact Us || Caron Connections ||  
Latch Hook ||

Visit Bond America online

©2013 Caron International