



KNIT | SKILL LEVEL: INTERMEDIATE

ABBREVIATIONS

Alt = Alternate(ing)

Approx = Approximately

Beg = Beginning

C4B = Slip next 2 stitches onto cable needle and leave at back of work. K2, then K2 from cable needle

C4F = Slip next 2 stitches onto cable needle and leave at front of work. K2, then K2 from cable needle

Cont = Continue(ity)

Dec = Decreasing

Inc = Increasing

K = Knit

P = Purl

Pat = Pattern

Rep = Repeat

RS = Right side

St(s) = Stitch(es)

Tog = Together

MEASUREMENTS

Approx 16" [40.5 cm] wide x 90" [228.5 cm] long, excluding fringe.

GAUGE

15 sts and 20 rows = 4" [10 cm] in stocking st.

INSTRUCTIONS

Note: Shawl worked from first contrast section to opposite contrast section.

Cable Panel (worked over 16 sts)

(See Diagram on page 2)

1st row: (RS). K4. C4B. K8.

2nd and alt rows: Purl.

3rd row: K2. (C4B) twice. K6.

5th row: (C4B) twice. K8.

7th row: K2. C4B. K10.

9th row: Knit.

11th row: K8. C4F. K4.

13th row: K6. (C4F) twice. K2.

15th row: K8. (C4F) twice.

17th row: K10. C4F. K2.

19th row: Knit.

20th row: Purl.

These 20 rows form Cable Panel.

MATERIALS

Caron® Colorama Halo™ Perfect Phasing™ (8 oz/227 g; 481 yds/440 m)

Blue Raspberry (76020)

2 cakes or 935 yds/850 m

Size U.S. 10½ (6.5 mm) Susan Bates® Silvalume® knitting needles **or size needed to obtain gauge.** Susan Bates® split-lock stitch count markers.

Cast on 71 sts.

1st row: (RS). *K1. P1. Rep from * to last st. K1.

2nd row: *P1. K1. Rep from * to last st. P1.

Rep last 2 rows of (K1. P1) ribbing once more, inc 2 sts evenly across of last row. 73 sts.

Proceed in pat as follows:

1st row: (RS). K1. P1. *P1. Work 1st row of Cable Panel. Rep from * 3 times more. P2. K1.

2nd row: K1. P1. *K1. Work 2nd row of Cable Panel. Rep from * 3 times more. K1. P1. K1.

3rd row: K1. P1. *P1. Work 3rd row of Cable Panel. Rep from * 3 times more. P2. K1.

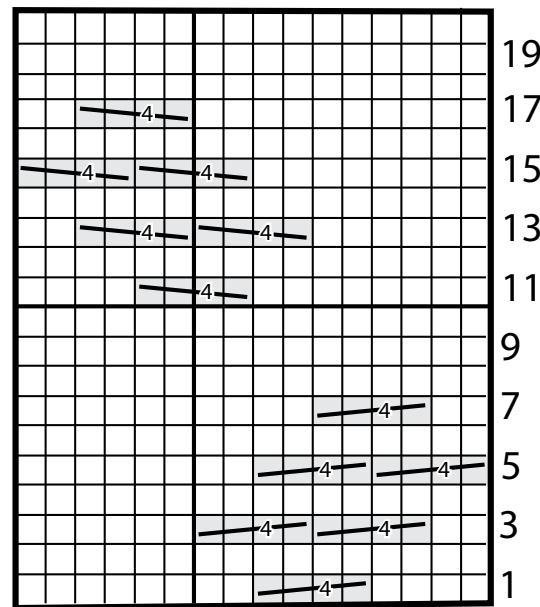
4th row: K1. P1. *K1. Work 4th row of Cable Panel. Rep from * 3 times more. K1. P1. K1.

Cable Panel is now in position.

Last 2 rows form Seed St Pat at each side of Scarf over 2 sts.

Cont in pat, keeping cont of Cable Panel until work from beg measures approx 89" [226 cm], ending on 8th or 18th row and dec 2 sts evenly across last row. 71 sts. Work 4 rows in (K1. P1) ribbing, as given above. Cast off in rib.

Fringe: Cut strands of yarn 15" [38 cm] long. Taking 2 strands together (tog), fold in half and knot into fringe across both ends of Scarf. Trim fringe evenly.



Key

□ = Knit on RS rows
 □ = Purl on WS rows

= C4B

= C4F

