



 KNIT | SKILL LEVEL: **INTERMEDIATE**

### ABBREVIATIONS

**Approx** = Approximately

**Cont** = Continue

**K** = Knit

**P** = Purl

**Pat** = Pattern

**Rep** = Repeat

**RS** = Right side

**St(s)** = Stitch(es)

**Tog** = Together

**WS** = Wrong side

### MEASUREMENTS

Approx 10½" x 60½" [26.5 x 153.5 cm],  
without fringe.

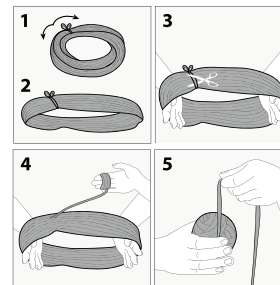
### GAUGE

15 sts and 20 rows = 4" [10 cm].

### INSTRUCTIONS

#### Notes:

- Before working with Caron x Pantone multi-shade yarn braid, separate each color link and wind into 5 separate balls.
- Each color link will be referenced by its Pantone color number (see label).
- Designate each different shade of the 5 separate yarn balls as Contrast A, B, C, D and E as noted in Materials section (or as desired).
- Due to finite amount of yarn in each shade, pattern gauge must be matched to ensure successful results
- When working from chart, use separate balls of yarn for each separate area of color in the design. To change colors, wind the 2 colors around each where they meet, on WS, to avoid a hole



### MATERIALS

**Caron® x Pantone™** (3.5 oz/100 g; 127 yds/116 m)

**Main Color (MC)** Purple Mist (01024)      **3 braids**

**Contrast Color** Tree Rings (01026)      **1 braid**

Size U.S. 10 (6 mm) knitting needles **or size needed to obtain gauge.**

MC

17-5034

Contrast Color

A - 14-1210

B - 13-0000

C - 16-0906

D - 17-0000

E - 19-0000

With MC, cast on 39 sts.

**1st row:** (RS). K1. \*P1. K1. Rep from \* to end of row.

Rep last row for Seed St 5 times more.

Proceed in pat as follows:

**1st row:** (RS). K1. (P1. K1) twice. With A as Color 1, knit 1st row of Chart, *reading row from right to left*. K1. (P1. K1) twice.

**2nd row:** K1. (P1. K1) twice. Purl 2nd row of Chart, *reading row from left to right*. K1. (P1. K1) twice.

Chart is now in position. Cont in pat as established until Chart is complete. Break A.

With B as Color 1, work rows 1 through 58 of Chart. Break B.

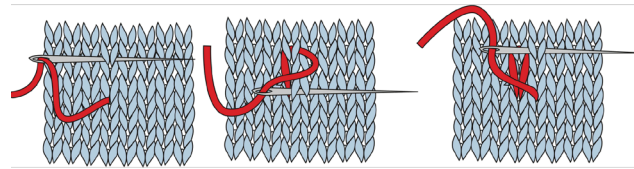
With C as Color 1, work rows 1 through 58 of Chart. Break C.

With D as Color 1, work rows 1 through 58 of Chart. Break D.

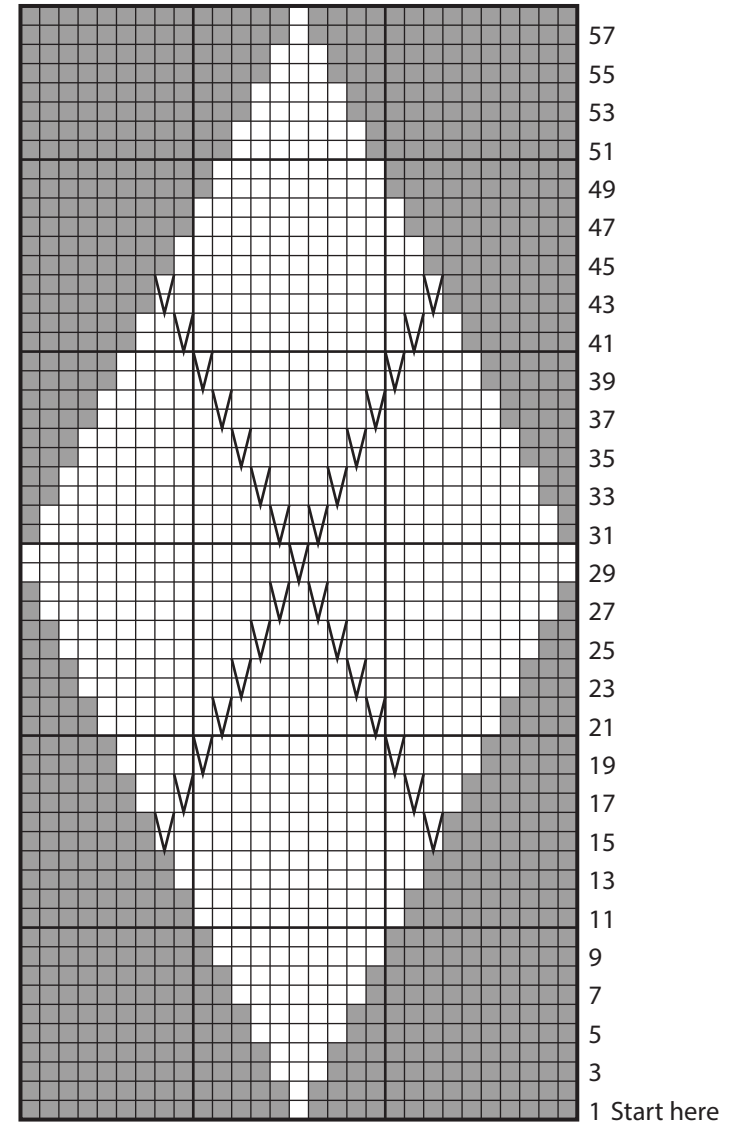
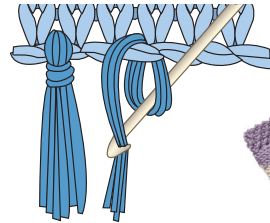
With E as Color 1, work rows 1 through 58 of Chart. Break E.

With MC, work 6 rows Seed St. Cast off.

**Duplicate Stitch:** With MC, work diagonal lines in duplicate st as seen in Chart, noting each duplicate stitch is worked over 2 rows.



**Fringe:** Cut strands of MC 16" [40.5 cm] long. Taking 3 strands tog, fold in half and knot into fringe across ends of Scarf. Trim fringe evenly.



Key

■ = Main Color (MC)

□ = Color 1

∇ = Duplicate st