



KNIT | SKILL LEVEL: INTERMEDIATE

ABBREVIATIONS

Alt = Alternate(ing)

Beg = Beginning

BrDecR = (Worked over 3 stitches)

Slip next stitch knit-wise with yarn at back of work. Knit next stitch.

Pass slipped stitch over just knit stitch and move stitch to left-hand needle. Pass second stitch on left-hand needle over first stitch.

Move stitch to right hand needle. 2 stitches decreased. (See photos on page 4)

BrK1 = Brioche knit stitch. Knit the next stitch together with accompanying yarn over. (See photos on page 3).

BrP1 = Brioche purl stitch. Purl the next stitch together with accompanying yarn over. (See photos on page 3).

Cont = Continue(ity)

K = Knit

K1tbl = Knit next stitch through back loop

K2tog = Knit next 2 stitches together

Pat = Pattern

Rem = Remain(ing)

Rnd(s) = Round(s)

Sl1K = Slip next st knitwise

Sl1yo = Slip next stitch purl-wise with yarn in front of work, bringing yarn over needle (and over slipped st) to back of work. Yarn is in place to work a knit stitch. If Sl1yo precedes a purl stitch, bring yarn under needle to front of work to maintain yo before working purl stitch. (See photos on page 3).

P1tbl = Purl next stitch through back loop

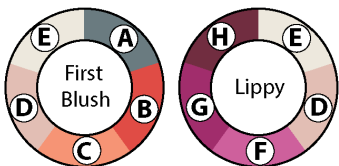
St(s) = Stitch(es)

MATERIALS

Caron® Colorama™ O'Go™ (6.4 oz/180 g; 228 yds/208 m)

First Blush (68009) **1 O'Go**

Lippy (68004) **1 O'Go**



Sizes U.S. 8 [5 mm] and U.S. 10 [6 mm] circular knitting needles 16" [40.5 cm] long. Set of 4 size U.S. 8 (5 mm) double-pointed knitting needles **or size needed to obtain gauge.** Stitch marker. Yarn needle.

SIZE

One size to fit average Adult.

GAUGES

12 sts and 32 rows = 4" [10 cm] in brioche pat on smaller needles.

13 sts and 20 rows = 4" [10 cm] in twisted rib pat on larger needles.

INSTRUCTIONS

Notes:

- To begin working with the O'Go format, carefully cut plastic tie where the ends of the O'Go meet.
- Pull tie to remove.
- For this pattern, colors can be easily separated by gently pulling apart and cutting at the color transition. Each color is ready to use.
- Designate each color A, B, C, D, E, F, G, H as indicated in Materials. Note that D and E are in both First Blush and Lippy O'Gos.
- The wrap (yarn over) created by Sl1yo **does not** count as a separate stitch and should be treated as one stitch along with slipped stitch it accompanies.

HAT

With A and larger circular needle, cast on 64 sts. Join in rnd, placing marker on first st.

1st to 8th rnds: *K1tbl. P1tbl. Rep from * around.

Stripe Pat

Note: Stripe Pat refers to odd-numbered rnds only.

All even-numbered rnds are worked in E.

With B, work 5 rnds.

With F, work 5 rnds.

With C, work 5 rnds.

With G, work 5 rnds.

With D, work 5 rnds.

With H, work 5 rnds.

These 30 rnds form Stripe Pat for odd-numbered rnds.

Change to smaller circular needle and proceed as follows in Stripe Pat:

Set up Brioche Pat: 1st rnd: With B, *K1. Sl1yo. Rep from * around.

2nd rnd: With E, *Sl1yo. BrP1. Rep from * around.

First rnd of Stripe Pat is now in position.

Keeping cont of Stripe Pat, proceed in Brioche Cable Pat as follows: (see Chart I on page 5)

1st rnd: *BrK1. Sl1yo. BrDecR. Sl1yo. (BrK1. Sl1yo) 5 times. Rep from * around. 56 sts.

2nd rnd: *Sl1yo. BrP1. Rep from * around.

3rd rnd: *BrK1. Sl1yo. Rep from * around.

4th rnd: As 2nd rnd.

5th rnd: *BrDecR. Sl1yo. (BrK1. yo. BrK1) all in next st. Sl1yo. (BrK1. Sl1yo) 4 times. Rep from * around.

6th rnd: *Sl1yo. BrP1. Sl1yo. P1. (Sl1yo. BrP1) 5 times. Rep from * around.

7th rnd: As 3rd rnd.

8th rnd: As 2nd rnd.

9th rnd: *BrK1. Sl1yo. (BrK1. yo. BrK1) all in next st. Sl1yo. (BrK1. Sl1yo) 5 times. Rep from * around. 64 sts.

10th rnd: *Sl1yo. BrP1. Sl1yo. P1. (Sl1yo. BrP1) 6 times. Rep from * around.

11th rnd: As 3rd rnd.

12th rnd: As 2nd rnd.

13th rnd: *(BrK1. Sl1yo) 5 times. BrDecR. Sl1yo. BrK1. Sl1yo. Rep from * around. 56 sts.

14th rnd: As 2nd rnd.

15th rnd: As 3rd rnd.

16th rnd: As 2nd rnd.

17th rnd: *(BrK1. Sl1yo) 4 times. Sl1yo. BrDecR. Sl1yo. (BrK1. yo. BrK1) all in next st. Sl1yo. BrK1. Sl1yo. Rep from * around.

18th rnd: *(Sl1yo. BrP1) 5 times. Sl1yo. P1. Sl1yo. BrP1. Rep from * around.

19th rnd: As 3rd rnd.

20th rnd: As 2nd rnd.

21st rnd: *(BrK1. Sl1yo) 5 times. (BrK1. yo. BrK1) all in next st. Sl1yo. BrK1. Sl1yo. Rep from * around. 64 sts.

22nd rnd: *(Sl1yo. BrP1) 5 times. Sl1yo. P1. (Sl1yo. BrP1) twice. Rep from * around.

23rd rnd: As 3rd rnd.

24th rnd: As 2nd rnd.

These 24 rnds form Brioche Cable Pat.

Rep 1st to 22nd rnds of Brioche Cable Pat once more.

Note: Change to set of 4 smaller needles during crown shaping as necessary.

Shape Crown: (see Chart II on page 5)

1st rnd: *BrK1. Sl1yo. Rep from * around.

2nd and alt rnds: With E, *Sl1yo. BrP1. Rep from * around.

3rd rnd: *BrK1. Sl1yo. BrDecR. Sl1yo. (BrK1. Sl1yo) 5 times. Rep from * around. 56 sts.

5th rnd: *BrDecR. Sl1yo. (BrK1. Sl1yo) 5 times. Rep from * around. 48 sts.

7th rnd: *BrDecR. Sl1yo. (BrK1. Sl1yo) 4 times. Rep from * around. 40 sts.

9th rnd: *(BrK1. Sl1yo) twice. BrDecR. Sl1yo. BrK1. Sl1yo. Rep from * around. 32 sts.

11th rnd: *BrK1. Sl1yo. BrDecR. Sl1yo. BrK1. Sl1yo. Rep from * around. 24 sts.

12th rnd: As 2nd rnd. Break yarn, leaving a long end. Draw end tightly through rem 24 sts and fasten securely.

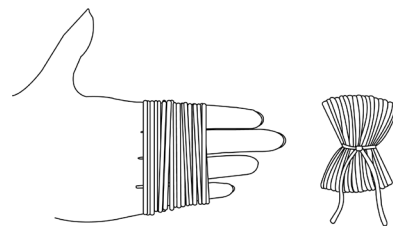
Pompom: Wind A around 4 fingers approx 100 times. Remove from fingers and tie tightly in center. Cut through each side of loops. Trim to a smooth round shape. Sew pompom to top of Hat.

Sl1yo = Slip next stitch purl-wise with yarn in front of work, bringing yarn over needle (and over slipped stitch) to back of work. Yarn is in place to work a BrK1 stitch. If Sl1yo precedes a BrP1 stitch, bring yarn under needle to front of work to maintain yo before working BrP1 stitch.



BrK1 = Knit next stitch together with accompanying yarn over.

BrP1 = Purl next stitch together with accompanying yarn over.



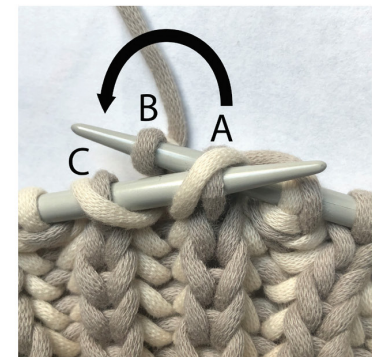
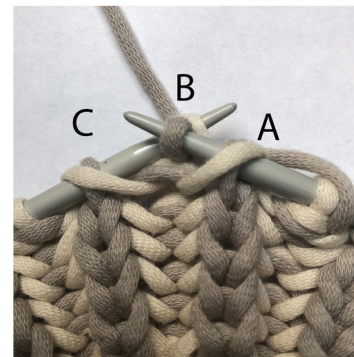
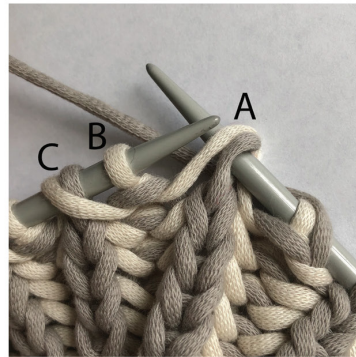
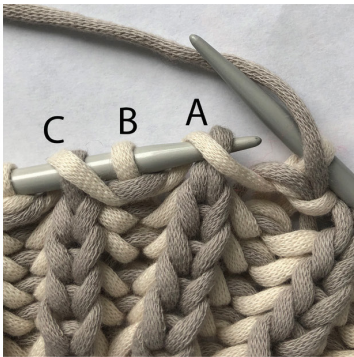
BRIOCHE RIGHT DECREASE

BrDecR = Worked over 3 stitches (A, B, C).

1) Slip next stitch (A) knit-wise with yarn at back of work (SI1yo).

3) Knit next stitch (B).

4a) Pass slipped stitch (A) over stitch just knit (B)...



4b) ...

5) ... and move stitch to left-hand needle.

6) Pass second stitch on left-hand needle (C) over first stitch (B).

7) Move stitch to right-hand needle. 2 stitches decreased.

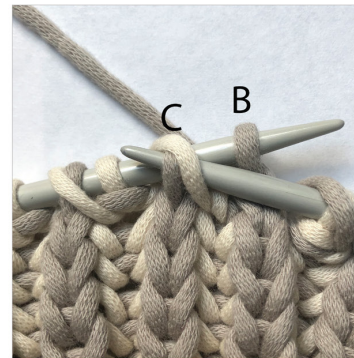
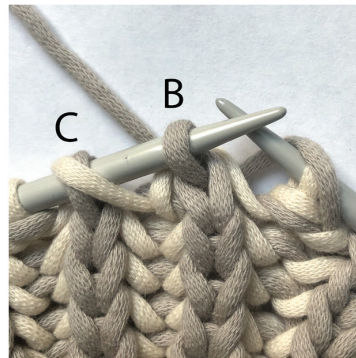
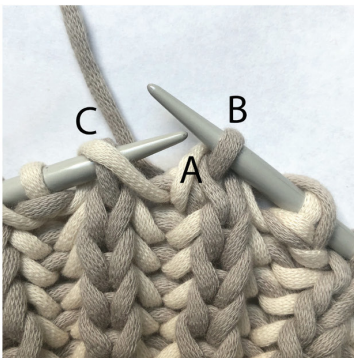


Chart I: Brioche Cable

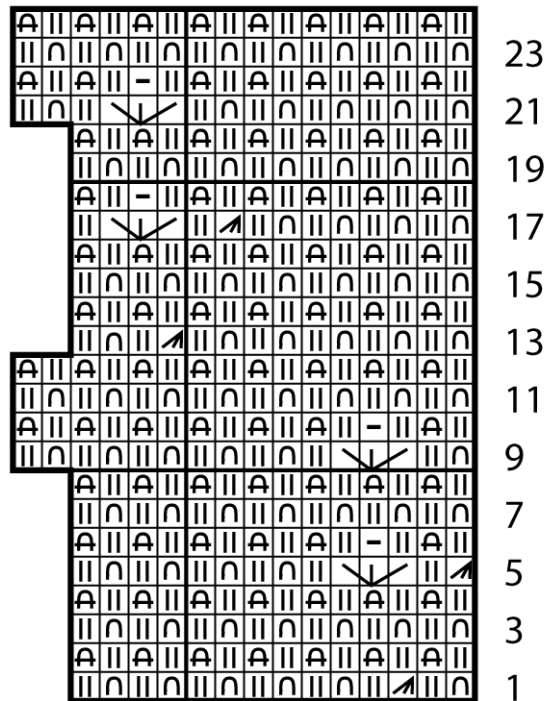
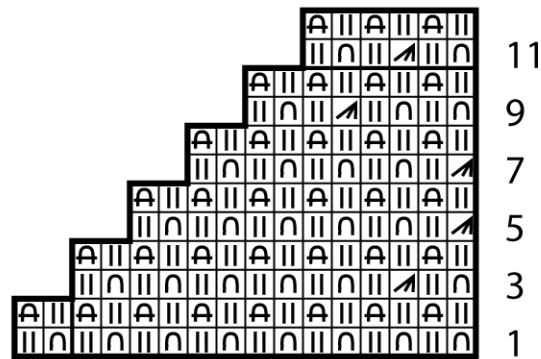


Chart II: Crown Shaping



Key

-  = BrDecR
-  = BrK1
-  = BrK1.yo.BrK1.
-  = BrP1
-  = Knit
-  = Purl
-  = Sl1yo

