



KNIT | SKILL LEVEL: INTERMEDIATE

ABBREVIATIONS

Beg = Beginning
Cont = Continue(ity)
K = Knit
K2tog = Knit next
 2 stitches together

P = Purl
Pat = Pattern
PM = Place marker
Rem = Remaining
Rep = Repeat

Rnd(s) = Round(s)
RS = Right side
St(s) = Stitch(es)
Tog = Together

SIZE

One size to fit Adult palm 7½" [19 cm].

GAUGE

20 sts and 25 rows = 4" [10 cm] in Fair Isle Pat.

INSTRUCTIONS

Note: When working from chart, carry yarn not in use loosely across WS of work but never over more than 5 sts. When it must pass over more than 5 sts, weave it over and under color in use. The colors are never twisted around one another.

MITTENS

RIGHT MITTEN

**With set of 4 smaller needles and A, cast on 40 sts. Divide onto 3 needles (13, 13, 14) sts. PM on first st for beg of rnd.

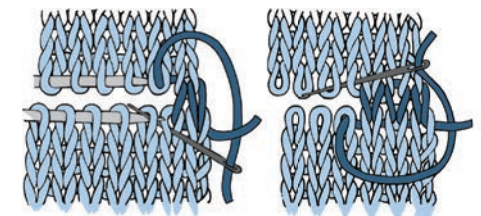
1st rnd: *K2. P2. Rep from * around. Rep last rnd of (K2. P2) ribbing for 3" [7.5 cm].**

Knit 1st to 16th rnds of Chart I (see page 2), *reading rnds from right to left.*

Thumb opening: 1st rnd: Pat 28 sts. Slip last 8 sts onto a stitch holder. Pat to end of rnd.

2nd rnd: Pat 20 sts. **Turn.** Cast on 8 sts. **Turn.** Pat to end of rnd. 40 sts.

***Cont in chart, noting 4-st decs on every rnd after 35th rnd. With E, graft 2 sets of 2 sts tog.



MATERIALS

Caron® Simply Soft® (6 oz/170 g; 315 yds/288 m)

Contrast A Dark Country Blue (9711) **1 ball**

Contrast B Country Blue (9710) **1 ball**

Contrast C Light Country Blue (9709) **1 ball**

Contrast D Light Country Peach (9737) **1 ball**

Contrast E Off White (9702) **1 ball**

Caron® Simply Soft® Heathers™ (5 oz/141.7 g; 250 yds/228 m)

Contrast F Gray Heather (9509) **1 ball**

Contrast G Woodland Heather (9503) **1 ball**

Set of 4 sizes U.S. 6 (4 mm) and U.S. 7 (4.5 mm) double-pointed knitting needles **or size needed to obtain gauge.** Stitch marker. Stitch holder. Yarn needle.

Make thumb: With A and larger needles, K8 from st holder. Pick up and knit 8 sts at base of thumb. Divide these 16 sts onto 3 needles (5, 5, 6). Join in rnd. PM on first st. Knit 12 rnds even.

Next rnd: (K2, K2tog) 4 times. 12 sts.

Next rnd: (K2tog) 6 times. Break yarn. Thread end through rem 6 sts and fasten securely.***

LEFT MITTEN

Work from ** to ** as given for Right Mitten.

Knit 1st to 16th rnds of Chart II, reading rnds from **right** to left.

Thumb opening: 1st rnd: Pat across 20 sts. Slip last 8 sts onto a stitch holder. Pat to end of rnd.

2nd rnd: Pat 12 sts. Turn. Cast on 8 sts. Turn. Pat to end of rnd. 40 sts.

Work from *** to *** as given for Right Mitten.

Chart I

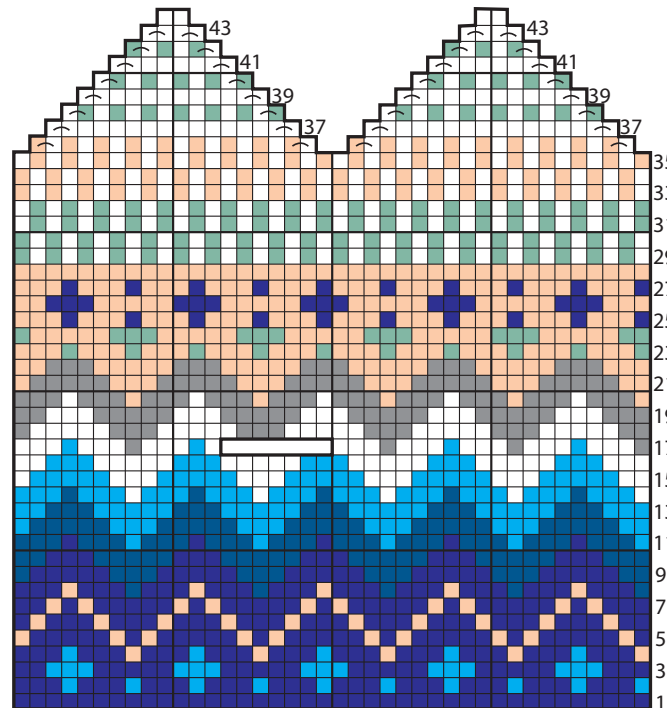
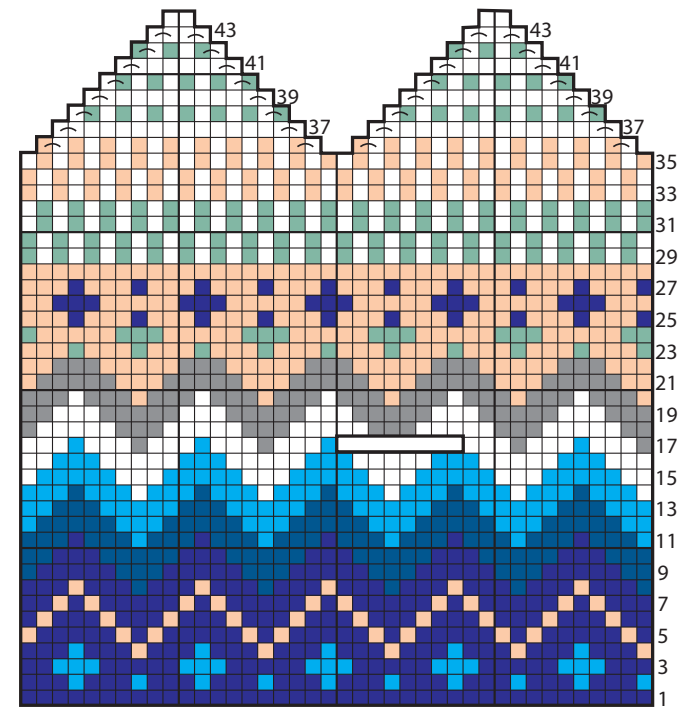


Chart II



Key

- | | |
|----------------|------------------|
| ■ = Contrast A | □ = Contrast E |
| ■ = Contrast B | ■ = Contrast F |
| ■ = Contrast C | ■ = Contrast G |
| ■ = Contrast D | ⊞ = K2tog or ssk |