



KNIT | SKILL LEVEL: INTERMEDIATE

ABBREVIATIONS

Alt = Alternate(ing)

K = Knit

K2tog = Knit next 2 stitches together

M1 = Make 1 stitch by picking up horizontal loop lying before next stitch and knitting into back of loop

P = Purl

Pat = Pattern

PM = Place marker

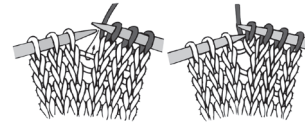
Rem = Remaining

Rep = Repeat

Rnd(s) = Round(s)

St(s) = Stitch(es)

WS = Wrong side



MATERIALS

Caron® Simply Soft® (6 oz/170 g; 315 yds/288 m)

Contrast A Dark Country Blue (9711) **1 ball**

Contrast B Country Blue (9710) **1 ball**

Contrast C Light Country Blue (9709) **1 ball**

Contrast D Light Country Peach (9737) **1 ball**

Contrast E Off White (9702) **1 ball**

Caron® Simply Soft® Heathers™ (5 oz/141.7 g; 250 yds/228 m)

Contrast F Gray Heather (9509) **1 ball**

Contrast G Woodland Heather (9503) **1 ball**

Size U.S. 7 (4.5 mm) circular knitting needle 16" [40 cm] long. Set of 4 size U.S. 7 (4.5 mm) double-pointed knitting needles **or size needed to obtain gauge.** Stitch marker. Yarn needle.

SIZE

One size to fit Adult.

GAUGE

19 sts and 23 rows = 4" [10 cm] in Fair Isle Pat.

INSTRUCTIONS

Notes: When working from chart, carry yarn not in use loosely across WS of work but never over more than 5 sts. When it must pass over more than 5 sts, weave it over and under color in use. The colors are never twisted around one another. Change to double-pointed needles for top shaping.

With A and circular needle, cast on 88 sts. Join in rnd. PM for beg of rnd.

1st rnd: *K2. P2. Rep from * around. Rep last rnd of (K2. P2) ribbing 6 times more.

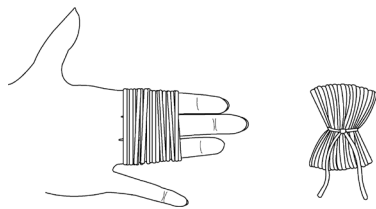
Next rnd: *K11. M1. Rep from * around. 96 sts.

Knit in Chart to end of chart, *reading rnds from right to left* and noting 8-st rep will be worked 12 times.

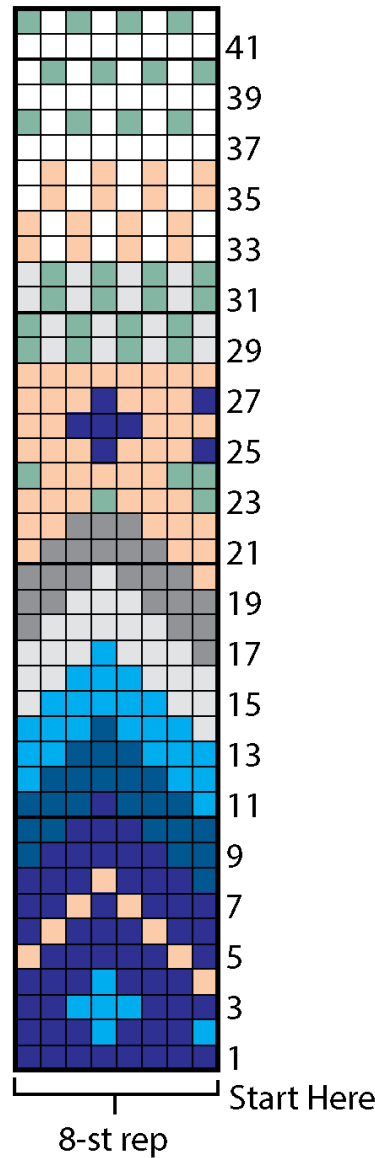
Chart is shown on page 2.

Shape crown: 1st rnd: With A, *K6. K2tog. Rep from * around. 84 sts.
2nd and alt rnds: Knit.
3rd rnd: *K5. K2tog. Rep from * around. 72 sts.
5th rnd: *K4. K2tog. Rep from * around. 60 sts.
7th rnd: *K3. K2tog. Rep from * around. 48 sts.
9th rnd: *K2. K2tog. Rep from * around. 36 sts.
 Break yarn, leaving a long end. Thread end through rem sts. Pull tightly. Fasten securely.

Pompom: Wind 2 strands of A, 1 strand each D and G around 3 fingers 40 times. Tie tightly in the middle and leave a long end for attaching to Hat. Cut loops at both ends and trim to smooth round shape. Sew securely to top of Hat.



Chart



Key

- = Contrast A
- = Contrast B
- = Contrast C
- = Contrast D
- = Contrast E
- = Contrast F
- = Contrast G