



KNIT | SKILL LEVEL: **INTERMEDIATE**

ABBREVIATIONS

K = Knit
K2tog = Knit next 2 stitches together
P = Purl
P2sso = Pass 2 slipped stitches over
Pat = Pattern
Rem = Remaining
Rep = Repeat
RS = Right side

Ssk = Slip next 2 stitches knitwise one at a time. Pass them back onto left-hand needle, then knit through back loops together
Sl2 = Slip next 2 stitches knitwise at once as if to K2tog
St(s) = Stitch(es)
Yo = Yarn over

SIZE

One size to fit Adult.

GAUGE

20 sts and 26 rows = 4" [10 cm] with larger needles in stocking st.

INSTRUCTIONS

With smaller needles, cast on 114 sts (multiple of 16 sts + 2). See Chart on page 2.

1st row: (RS). K2. *P2. K2. Rep from * to end of row.

2nd row: P2. *K2. P2. Rep from * to end of row.

Rep last 2 rows of (K2. P2) ribbing 4 times more.

Change to larger needles and proceed as follows:

1st row: (RS). K2. *P2. K3. K2tog. yo. K1. yo. ssk. K2. P2. K2. Rep from * to end of row.

2nd row: *P2. K2. P3. K3. P4. K2. Rep from * to last 2 sts. P2.

3rd row: K2. *P2. K2. K2tog. yo. K3. yo. ssk. K1. P2. K2. Rep from * to end of row.

4th row: *P2. K2. P2. K5. P3. K2. Rep from * to last 2 sts. P2.

5th row: K2. *P2. K1. K2tog. yo. K5. yo. ssk. P2. K2. Rep from * to end of row.

6th row: *P2. K2. P1. K7. P2. K2. Rep from * to last 2 sts. P2.

MATERIALS

Caron® Simply Soft® Speckle™ (5 oz/141 g; 235 yds/215 m) Clorophyll (61012) **1 ball**

Sizes U.S. 5 (3.75 mm) and U.S. 6 (4 mm) knitting needles **or size needed to obtain gauge.**

7th row: K2. *P2. K2tog. yo. K7. yo. ssk. P1. K2. Rep from * to end of row.

8th row: *P2. K1. P2. K7. P2. K2. Rep from * to last 2 sts. P2.

9th and 10th rows: As 7th and 8th rows.

11th row: As 7th row.

12th row: *P2. K1. P11. K2. Rep from * to last 2 sts. P2.

Proceed in pat as follows:

13th row: (RS). K2. *yo. K3. ssk. K5. K2tog. K3. yo. K1. Rep from * to end of row.

14th row: *K2. P13. K1. Rep from * to last 2 sts. K1. P1.

15th row: K2. *K1. yo. K3. ssk. K3. K2tog. K3. yo. K2. Rep from * to end of row.

16th row: *K3. P11. K2. Rep from * to last 2 sts. K1. P1.

17th row: K2. *K2. yo. K3. ssk. K1. K2tog. K3. yo. K3. Rep from * to end of row.

18th row: *K4. P9. K3. Rep from * to last 2 sts. K1. P1.

19th row: K2. *K3. yo. K3. Sl2. K1. p2sso. K3. yo. K4. Rep from * to end of row.

20th to 23rd rows: As 18th and 19th rows twice.

24th row: Purl.

25th row: K2. *K2. K2tog. K3. yo. K1. yo. K3. ssk. K3. Rep from * to end of row.

26th row: *P7. K3. P6. Rep from * to last 2 sts. P2.

27th row: K2. *K1. K2tog. (K3. yo) twice. K3. ssk. K2. Rep from * to end of row.

28th row: *P6. K5. P5. Rep from * to last 2 sts. P2.

29th row: K2. *K2tog. K3. yo. K5. yo. K3. ssk. K1. Rep from * to end of row.

30th row: *P5. K7. P4. Rep from * to last 2 sts. P2.

31st row: K1. ssk. *K3. yo. K7. yo. K3. Sl2. K1. p2sso. Rep from * to last 15 sts. K3. yo. K7. yo. K3. K2tog.

32nd to 35th rows: As 30th and 31st rows twice.

36th rows: Purl. Rep 13th to 24th rows once more.

Shape top: 1st row: (RS). K2. *K2. K2tog. K7. ssk. K3. Rep from * to end of row. 100 sts.

2nd row: *P7. K1. P6. Rep from * to last 2 sts. P2.

3rd row: K2. *K1. K2tog. K7. ssk. K2. Rep from * to end of row. 86 sts.

4th row: *P5. K3. P4. Rep from * to last 2 sts. P2.

5th row: K2. *K2tog. K7. ssk. K1. Rep from * to end of row. 72 sts.

6th row: *P3. K5. P2. Rep from * to last 2 sts. P2.

7th row: K1. ssk. *K7. Sl2. K1. p2sso. Rep from * to last 9 sts. K7. K2tog. 58 sts.

8th row: *P3. P2tog. P3. Rep from * to last 2 sts. P2. 51 sts.

Key

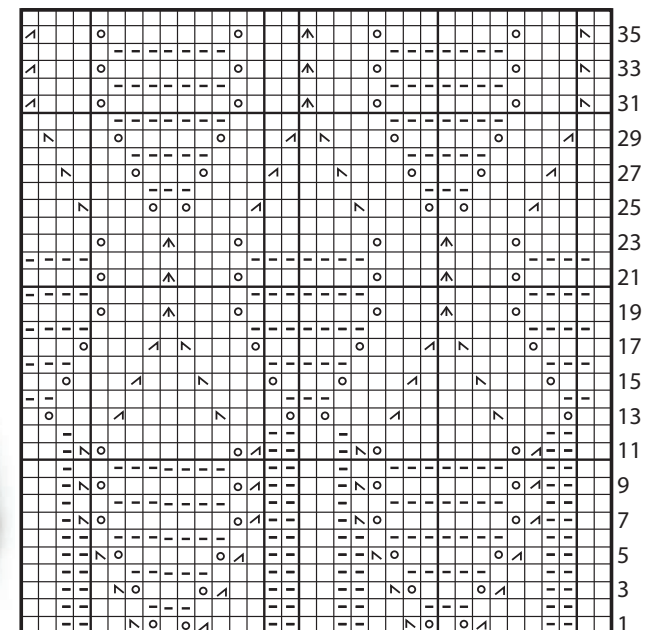
- ☐ = Knit on RS rows. Purl on WS rows.
- ☐ = Purl on RS rows. Knit on WS rows.
- ☒ = K2tog
- ☒ = Sl2. K1. p2sso.
- ☒ = ssk
- = yo

9th row: K1. ssk. *K4. Sl2. K1. p2sso. Rep from * to last 6 sts. K4. K2tog. 37 sts.

10th row: *P1. P2tog. P2. Rep from * to last 2 sts. P2. 30 sts.

11th row: K1. ssk. *K1. Sl2. K1. p2sso. Rep from * to last 3 sts. K1. K2tog. 16 sts. Break yarn, leaving a long end. Thread end through rem sts. Pull tightly. Fasten securely. Sew back seam.

Chart



Start here

16-st rep

