

Version 1



Version 2



 KNIT | SKILL LEVEL: INTERMEDIATE

ABBREVIATIONS

Alt = Alternate
Center Dec (worked over 3 sts) = Slip next 2 stitches as if to K2tog. K1, then pass slipped sts over knit stitch – center of 3 stitches should be on top of decrease, 2 stitches have been decreased
K = Knit

K2tog = Knit next 2 stitches together
P = Purl
Rem = Remain(ing)
Rnd(s) = Round(s)
Rep = Repeat
St(s) = Stitch(es)
WS = Wrong side

SIZE

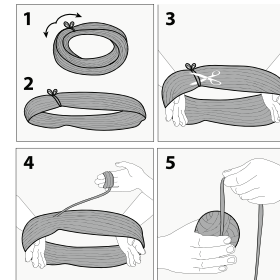
One size to fit adult.

GAUGE

15 sts and 20 rows = 4" [10 cm] with larger needles in stocking stitch.

INSTRUCTIONS

Notes: Before working with Caron® x Pantone™ multi-shade yarn braid, separate each color link and wind into 5 separate balls.



- Each color link will be referenced by its Pantone™ number (see label)
- Designate each different shade of the 5 separate yarn balls as Contrast A, B, C, D and E as noted in Materials section (or as desired).
- Due to finite amount of yarn in each shade, pattern gauge must be matched to ensure successful results.
- When working from charts, carry yarn not in use loosely across WS of work but never over more than 5 sts. When it must pass over more than 5 sts, weave it over and under color not in use. The colors are never twisted around one another.

MATERIALS

Caron® x Pantone™ (3.5 oz/100 g; 127 yds/116 m)

Version 1

Moody Pumpkins (01021) **1 braid**

Version 2

Purple Pops (01017) **1 braid**

Set of 4 sizes U.S. 9 (5.5 mm) and U.S. 10 (6 mm) double-pointed knitting needles **or size needed to obtain gauge.** Stitch marker.

Version 1

A - 17-5034 B - 19-4024 C - 19-4340 D - 18-1163 E - 19-0915

Version 2

A - 19-4324 B - 13-3406 C - 18-3838 D - 16-0737 E - 16-3307

With A and set of smaller double-pointed needles, cast on 72 sts. Divide sts evenly over 3 needles (24-24-24). Join in rnd, placing marker on first st.

1st to 6th rnds: *K2. P2. Rep from * around. Break A.

Change to B and larger set of needles.

Knit rnds 1 to 26 of Chart, reading rnds from right to left, noting 8-st rep will be worked 9 times. Break A, B and E.

With C, shape top as follows:

1st rnd: *K8. Center Dec. K7. Rep from * around. 64 sts.

2nd and alt rnds: Knit.

3rd rnd: *K7. Center Dec. K6. Rep from * around. 56 sts.

5th rnd: *K6. Center Dec. K5. Rep from * around. 48 sts.

7th rnd: *K5. Center Dec. K4. Rep from * around. 40 sts.

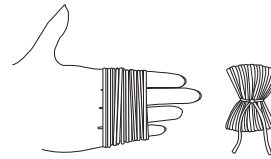
9th rnd: *K4. Center Dec. K3. Rep from * around. 32 sts.

11th rnd: *K3. Center Dec. K2. Rep from * around. 24 sts.

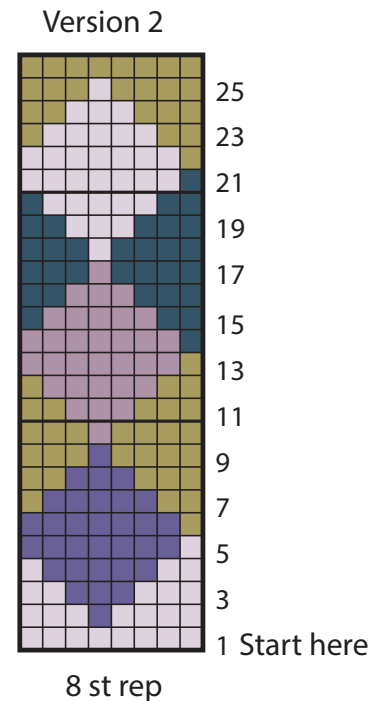
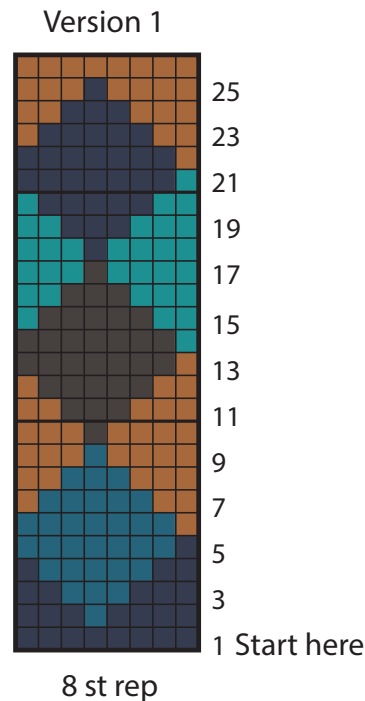
12th rnd: *K2tog. Rep from * around. 12 sts.

Break yarn, leaving a long end. Thread end through rem sts and draw up tightly. Fasten securely

Pompom: Wind E around 4 fingers approx 100 times. Remove from fingers and tie tightly in center. Cut through each side of loops. Trim to a smooth round shape. Sew to top of Hat.



- Version 1 Key
- Contrast A
 - Contrast B
 - Contrast C
 - Contrast D
 - Contrast E



- Version 2 Key
- Contrast A
 - Contrast B
 - Contrast C
 - Contrast D
 - Contrast E