

## Version 1



## Version 2



### MATERIALS

Caron® x Pantone™ (3.5 oz/100 g; 127 yds/116 m)

#### Version 1

Strawberry Chill (01019)

2 braids

#### Version 2

Fuchsia Foliage (01020)

2 braids

Set of 4 sizes U.S. 9 (5.5 mm) and U.S. 10 (6 mm) double-pointed knitting needles **or size needed to obtain gauge.** Stitch marker

### Version 1

A - 19-5408

B - 18-1633

C - 14-4809

D - 18-1755

E - 14-1210

### Version 2

A - 18-2436

B - 19-0315

C - 16-5806

D - 13-0442

E - 17-1462



KNIT | SKILL LEVEL: **INTERMEDIATE**

### ABBREVIATIONS

**Alt** = Alternate

**Center Dec** (worked over 3 sts) = Slip next 2 stitches as if to K2tog. K1, then pass slipped sts over knit stitch – center of 3 stitches should be on top of decrease, 2 stitches have been decreased

**K** = Knit

**K2tog** = Knit next 2 stitches together

**P** = Purl

**Rem** = Remain(ing)

**Rnd(s)** = Round(s)

**Rep** = Repeat

**St(s)** = Stitch(es)

### SIZE

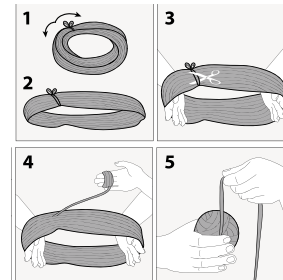
One size to fit adult.

### GAUGE

15 sts and 20 rows = 4" [10 cm] with larger needles in stocking stitch.

### INSTRUCTIONS

**Notes:** Before working with Caron® x Pantone™ multi-shade yarn braid, separate each color link and wind into 5 separate balls.



- Each color link will be referenced by its Pantone™ number (see label)
- Designate each different shade of the 5 separate yarn balls as Contrast A, B, C, D and E as noted in Materials section (or as desired).
- Due to finite amount of yarn in each shade, pattern gauge must be matched to ensure successful results.
- When working from charts, carry yarn not in use loosely across WS of work but never over more than 5 sts. When it must pass over more than 5 sts, weave it over and under color not in use. The colors are never twisted around one another.

With A and set of smaller double-pointed needles, cast on 72 sts. Divide sts evenly over 3 needles (24-24-24). Join in rnd, placing marker on first st.

**1st to 6th rnds:** \*K2. P2. Rep from \* around.

Change to larger set of needles.

Knit 6 rnds even.

Knit rnds 1 to 16 of Chart, reading rnds from right to left, noting 8-st rep will be worked 9 times.

Break A, B, C and D.

With E, knit 1 rnd.

With E, shape top as follows:

**1st rnd:** \*K8. Center Dec. K7. Rep from \* around. 64 sts.

**2nd and alt rnds:** Knit.

**3rd rnd:** \*K7. Center Dec. K6. Rep from \* around. 56 sts.

**5th rnd:** \*K6. Center Dec. K5. Rep from \* around. 48 sts.

**7th rnd:** \*K5. Center Dec. K4. Rep from \* around. 40 sts.

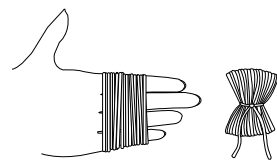
**9th rnd:** \*K4. Center Dec. K3. Rep from \* around. 32 sts.

**11th rnd:** \*K3. Center Dec. K2. Rep from \* around. 24 sts.

**12th rnd:** \*K2tog. Rep from \* around. 12 sts.

Break yarn, leaving a long end. Thread end through rem sts and draw up tightly. Fasten securely

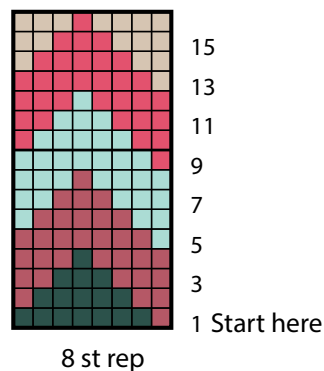
**Pompom:** Wind rem yarn of all shades around 4 fingers approx 20 times. Remove from fingers and tie tightly in center. Cut through each side of loops. Trim to a smooth round shape. Sew to top of Hat.



Version 1 Key

- Contrast A
- Contrast B
- Contrast C
- Contrast D
- Contrast E

Version 1



Version 2

Version 2 Key

- Contrast A
- Contrast B
- Contrast C
- Contrast D
- Contrast E

