

Version 1



Version 2



KNIT | SKILL LEVEL: INTERMEDIATE

ABBREVIATIONS

Beg = Beginning
Cont = Continue(ity)
K = Knit
K2tog = Knit next 2 stitches together
P = Purl
Pat = Pattern
PM = Place marker
Rem = Remaining

Rep = Repeat
Rnd(s) = Round(s)
RS = Right Side
Ssk = Slip next 2 stitches knitwise one at a time. Pass them back onto left-hand needle, then knit through back loops together.
St(s) = Stitch(es)
Tog = Together

MATERIALS

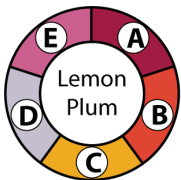
Caron® Big Donut™ O'Go™ (9.9 oz/280 g; 502 yds/459 m)

Version 1

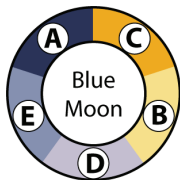
Lemon Plum (29002) **1 O'Go**

Version 2

Blue Moon (29005) **1 O'Go**



or



Set of 4 sizes U.S. 6 (4 mm) and U.S. 7 (4.5 mm) double-pointed knitting needles **or size needed to obtain gauge**. Yarn needle. Stitch marker.

SIZE

One size to fit Adult.

GAUGE

20 sts and 25 rows = 4" [10 cm] in Fair Isle Pat with larger needles.

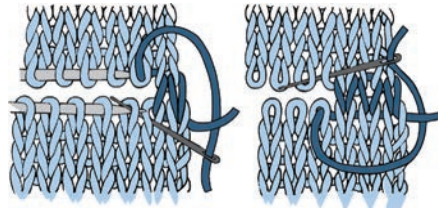
INSTRUCTIONS

Notes:

- To begin working with the O'Go format, carefully cut plastic tie where the ends of the O'Go meet.
- Pull tie to remove.

- For this pattern, colors can be easily separated by gently pulling apart and cutting at the color transition. Each color is ready to use.
- When working from chart, carry yarn not in use loosely across WS of work. The colors are never twisted around one another.

***Cont in chart, noting 4-st decs on every rnd after 35th rnd. Graft 2 sets of 2 sts tog.



GRAFTING DIAGRAM

RIGHT MITTEN

**With set of 4 smaller needles and E, cast on 40 sts. Divide onto 3 needles (12, 12, 16) sts. PM on first st for beg of rnd.

1st rnd: *K2. P2. Rep from * around. Rep last rnd of (K2. P2) ribbing for 2½" [6 cm].**

Knit 1st to 16th rnds of Right Mitten Chart, *reading rnds from right to left*. See chart on page 3 (version 1) or 4 (version 2).

Thumb opening: 1st rnd: Pat across 28 sts. Slip last 8 sts onto a st holder. Pat to end of rnd.

2nd rnd: Pat 20 sts. Turn. Cast on 8 sts. Turn. Pat to end of rnd. 40 sts.

Make thumb: With E and larger needles, K8 from st holder. Pick up and knit 8 sts at base of thumb. Divide these 16 sts onto 3 needles (5, 5, 6). Join in rnd. PM on first st.

Next rnd: (K3. K2tog) 3 times. K1. 13 sts.

Knit 14 rnds even.

Next rnd: (K2tog) 6 times. K1. 7 sts. Break yarn. Thread end through rem 7 sts and fasten securely.***

LEFT MITTEN

Work from ** to ** as given for Right Mitten.

Knit 1st to 16th rnds of Left Mitten Chart, *reading rnds from right to left*.

Thumb opening: Rnd 1: Pat across 20 sts. Slip last 8 sts onto a st holder. Pat to end of rnd.

Rnd 2: Pat 12 sts. Turn. Cast on 8 sts. Turn. Pat to end of rnd. 40 sts.

Work from *** to *** as given for Right Mitten.

Version 1

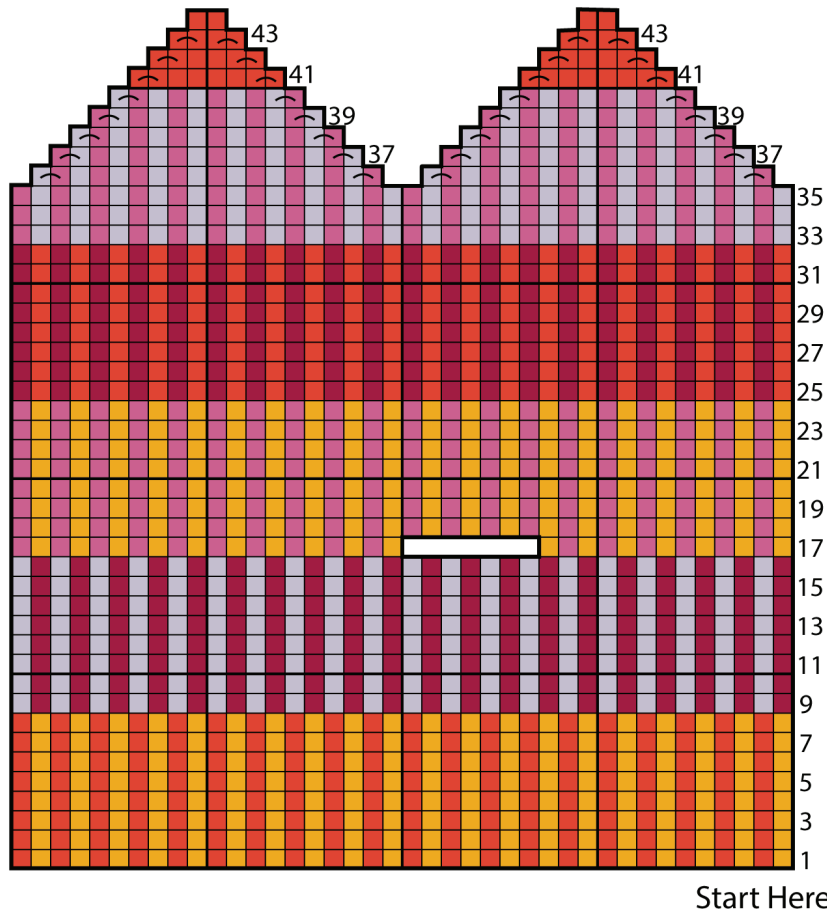


Version 2

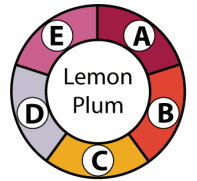
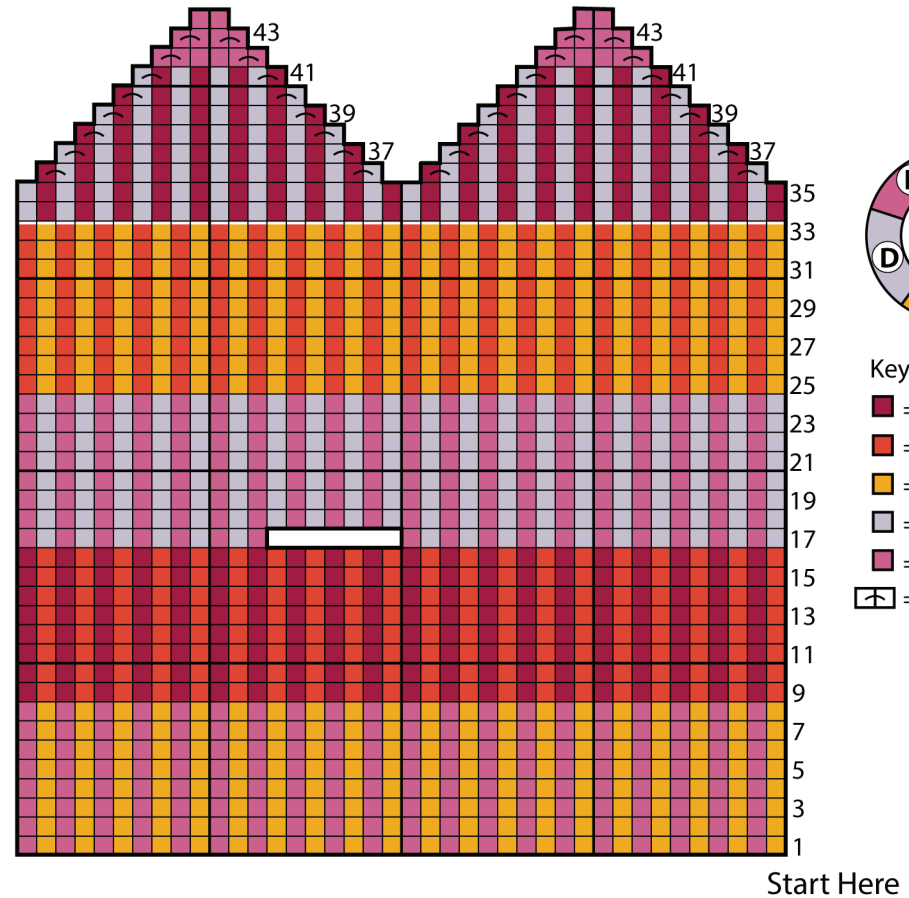


Version 1

LEFT MITTEN



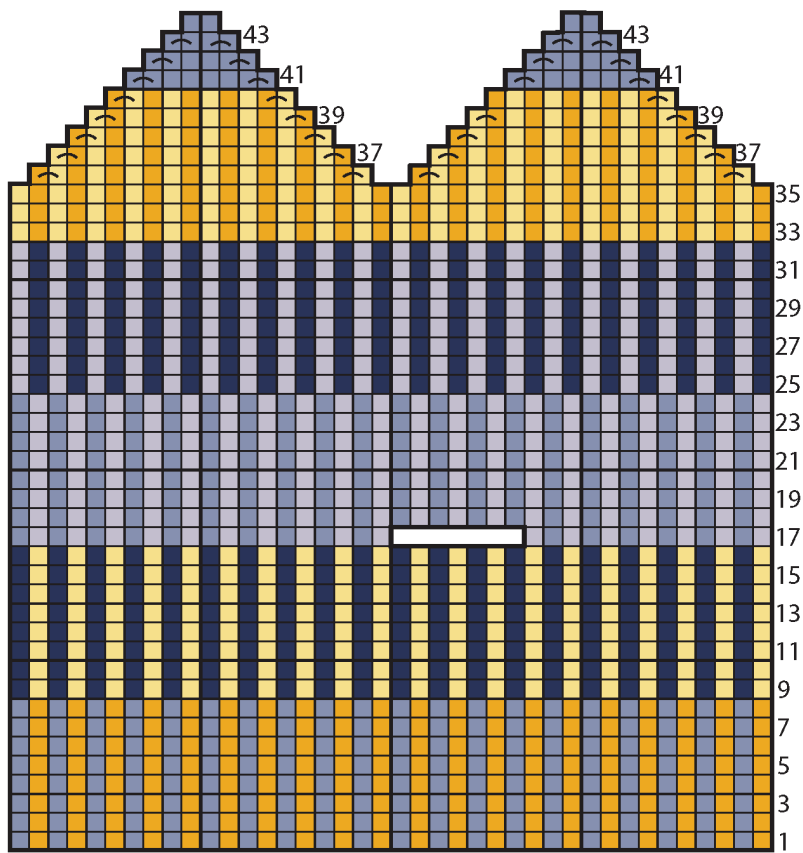
RIGHT MITTEN



- Key
- = A
 - = B
 - = C
 - = D
 - = E
 - = K2tog or ssk

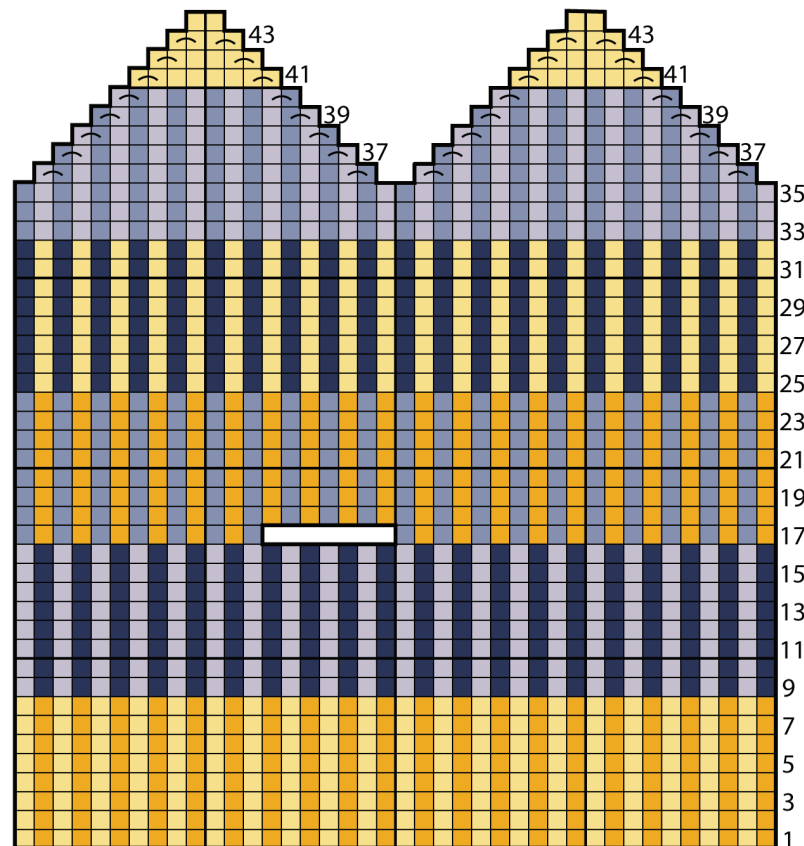
Version 2

LEFT MITTEN

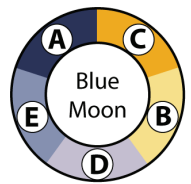


Start Here

RIGHT MITTEN



Start Here



Key

- = A
- = B
- = C
- = D
- = E
- ⌞ = K2tog or ssk