



KNIT | SKILL LEVEL: INTERMEDIATE

## ABBREVIATIONS

**Approx** =

Approximately

**Beg** = Beginning

**C4B** = Slip next 2 stitches onto cable needle and leave at back of work. K2, then K2 from cable needle

**C4F** = Slip next 2 stitches onto cable needle and leave at front of work. K2, then K2 from cable needle

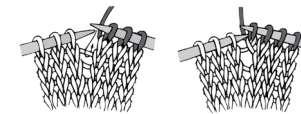
**Cont** = Continue(ity)

**K** = Knit

**K2tog** = Knit next 2 stitches together

**Kfb** = Increase 1 stitch by knitting into front and back of next stitch

**M1** = Make 1 stitch by picking up horizontal loop lying before next stitch from *back to front* and knitting into front of loop



**P** = Purl

**P2tog** = Purl next 2 stitches together

**Pat** = Pattern

**PM** = Place marker

**Rem** = Remaining

**Rep** = Repeat

**Rnd(s)** = Round(s)

**Ssk** = Slip next 2 stitches knitwise one at a time. Pass them back onto left-hand needle, then knit through back loops together

**St(s)** = Stitch(es)

**Tog** = Together

## MATERIALS

**Caron® Simply Soft® Heathers™** (5 oz/141.7 g; 250 yds/228 m)

Gray Heather (H9509)

**1 ball**

Set of four size U.S. 6 (4 mm) double-pointed knitting needles **or size needed to obtain gauge.** Cable needle. Stitch marker. Stitch holder. Tapestry needle.

## SIZE

One size to fit palm 7½" [19 cm].

## GAUGE

20 sts and 26 rows = 4" [10 cm] in stocking st.

## INSTRUCTIONS

### RIGHT MITTEN

**Cable Panel A** (worked over 26 sts)

**Note:** All chart rows are read from **right** to left.

See Chart on page 3.

**1st row:** P1. (C4F. K4) 3 times. P1.

**2nd and 3rd rows:** P1. K24. P1.

**4th row:** P1. K2. (C4F. C4B) twice. C4F. K2. P1.

**5th and 6th rows:** As 2nd rnd.

**7th row:** P1. (K4. C4F) 3 times. P1.

**8th and 9th rows:** As 2nd row.

**10th row:** P1. K2. (C4B. C4F) twice. C4B. K2. P1.

**11th and 12th rows:** As 2nd row. These 1st to 12th rows form Cable Panel A.

\*\*Cast on 36 sts. Divide onto 3 needles 12 sts on each needle. PM for beg of rnd.

**1st row:** \*K2. P2. Rep from \* around.

Rep last rnd of (K2. P2) ribbing for 2" [5 cm].\*\*

**Next rnd:** (M1. K3) 7 times. M1. Knit to end of rnd. 44 sts.

**Next rnd:** P1. K24. P1. Knit to end of rnd.

Proceed in pat as follows:

**1st rnd:** Work 1st row of Cable Panel A. Knit to end of rnd.

**2nd rnd:** Work 2nd row of Cable Panel A. Knit to end of rnd. Cable Panel is now in position.

Keeping cont of Cable Panel A, work 6 rnds more.

**Shape thumb gusset:** Keeping cont of Cable Panel A, proceed as follows:

**1st rnd:** Pat across 26 sts. (Kfb) twice. Knit to end of rnd.

**2nd and alt rnds:** Work even in pat.

**3rd rnd:** Pat across 26 sts. Kfb. K2. Kfb. Knit to end of rnd.

**5th rnd:** Pat across 26 sts. Kfb. K4. Kfb. Knit to end of rnd.

**7th rnd:** Pat across 26 sts. Kfb. K6. Kfb. Knit to end of rnd.

**9th rnd:** Pat across 26 sts. Kfb. K8. Kfb. Knit to end of rnd. 54 sts.

**11th rnd:** Pat across 26 sts. Kfb. K10. Kfb. Knit to end of rnd. 56 sts.

**12th rnd:** Work even in pat.

**13th rnd:** Pat across 26 sts. Slip next 14 sts onto a st holder. Cast on 2 sts. Knit to end of rnd. 44 sts.

Cont even in pat until work **after ribbing** measures approx 6" [15 cm], ending on 1st row of pat.

**Shape top:** Proceed as follows:

**1st rnd:** ssk. K22. K2tog. ssk. K14. K2tog. 40 sts.

**2nd rnd:** ssk. K20. K2tog. ssk. K12. K2tog. 36 sts.

**3rd rnd:** K1. (C4F. C4B) twice. C4F. Knit to end of rnd.

**4th rnd:** ssk. K18. K2tog. ssk. K10. K2tog. 32 sts.

**5th rnd:** ssk. K16. K2tog. ssk. K8. K2tog. 28 sts.

**6th rnd:** K1. C4F. K4. C4F. Knit to end of rnd.

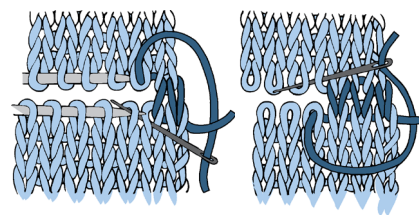
**7th rnd:** ssk. K14. K2tog. ssk. K6. K2tog. 24 sts.

**8th rnd:** ssk. (K2tog) 7 times. K8. 16 sts.

**9th rnd:** (ssk. K4. K2tog) twice. 12 sts.

Graft 2 sets of 6 sts tog.

## Grafting



**\*\*\*Thumb:** K14 from st holder. Pick up and knit 2 sts at base of thumb. Divide these 16 sts onto 3 needles. (5, 5, 6). Join in rnd.

Knit 10 rnds even.

**Next rnd:** (K2. K2tog) 4 times. 12 sts.

**Next rnd:** (K2tog) 6 times. Break yarn leaving a long end. Thread end through rem 6 sts. Draw up and fasten securely.\*\*\*

## LEFT MITTEN

**Cable Panel B** (worked over 26 sts)

**Note:** All chart rows are worked from **right** to left.

See Chart on page 3.

**1st row:** P1. (K4. C4B) 3 times. P1.

**2nd and 3rd rows:** P1. K24. P1.

**4th row:** P1. K2. (C4B. C4F) twice. C4B. K2. P1.

**5th and 6th rows:** As 2nd rnd.

**7th row:** P1. (C4B. K4) 3 times. P1.

**8th and 9th rows:** As 2nd row.

**10th row:** P1. K2. (C4F. C4B) twice. C4F. K2. P1.

**11th and 12th rows:** As 2nd row. These 1st to 12th rows form Cable Panel B.

Work from \*\* to \*\* as given for Right Mitten.

**Next rnd:** K15. (M1. K3) 7 times. M1. 44 sts

**Next rnd:** K18. P1. K24. P1.

Proceed in pat as follows:

**1st rnd:** K18. Work 1st row of Cable Panel B.

**2nd rnd:** K18. Work 2nd row of Cable Panel B.

Cable Panel B is now in position.

Keeping cont of Cable Panel B, work 6 rnds more.

**Shape thumb gusset:** Keeping cont of Cable Panel B, proceed as follows:

**1st rnd:** K16. (Kfb) twice. Pat to end of rnd.

**2nd and alt rnds:** Work even in pat.

**3rd rnd:** K16. Kfb. K2. Kfb. Pat to end of rnd.

**5th rnd:** K16.Kfb. K4. Kfb. Pat to end of rnd.

**7th rnd:** K16.Kfb. K6. Kfb. Pat to end of rnd.

**9th rnd:** K16.Kfb. K8. Kfb. Pat to end of rnd. 54 sts.

**11th rnd:** K16.Kfb. K10. Kfb. Pat to end of rnd. 56 sts.

**12th rnd:** Work even in pat.

**13th rnd:** K16. Slip next 14 sts onto a st holder. Cast on 2 sts. Pat to end of rnd. 44 sts.

Cont even in pat until work **after ribbing** measures approx 6" [15 cm], ending on 1st row of pat.

**Shape top:** Proceed as follows:

**1st rnd:** ssk. K14. K2tog. ssk. K22. K2tog. 40 sts.

**2nd rnd:** ssk. K12. K2tog. ssk. K20. K2tog. 36 sts.

**3rd rnd:** K15. (C4B. C4F) twice. C4B. K1.

**4th rnd:** ssk. K10. K2tog. ssk. K18. K2tog. 32 sts.

**5th rnd:** ssk. K8. K2tog. ssk. K16. K2tog. 28 sts.

**6th rnd:** K15. C4B. K4. C4B. Knit to end of rnd.

**7th rnd:** ssk. K6. K2tog. ssk. K14. K2tog. 24 sts.

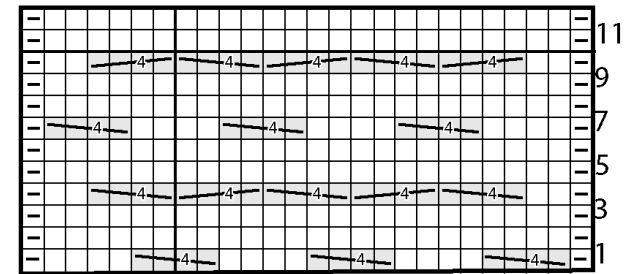
**8th rnd:** K8. ssk. (K2tog) 7 times. 16 sts.

**9th rnd:** (ssk. K4. K2tog) twice. 12 sts.

Graft 2 sets of 6 sts tog.

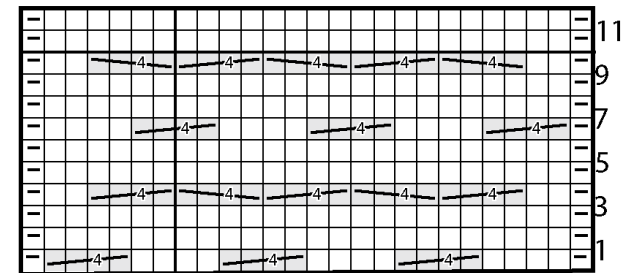
Work from \*\*\* to \*\*\* as given for Right Mitten.

Cable Panel A (Right Mitten)



Start Here

Cable Panel B (Left Mitten)



Start Here

Key

□ = Knit

◻ = Purl

 = C4B

 = C4F