



KNIT | SKILL LEVEL: INTERMEDIATE

## ABBREVIATIONS

**Approx** = Approximately

**Beg** = Begin(ning)(s)

**Cont** = Continue(ity)

**Dec** = Decreasing

**K** = Knit

**K2tog** = Knit next 2 stitches together

**P** = Purl

**P2tog** = Purl next 2 stitches together

**Pat** = Pattern

**Rem** = Remaining(s)

**Rep** = Repeat

**RS** = Right side

**Sl1Pwyif** = Slip next stitch purlwise with yarn at front of work

**St(s)** = Stitch(es)

**WS** = Wrong side

## MEASUREMENTS

**For Back:** Approx 40½" [103 cm] wide x 30" [76 cm] long.

## GAUGES

16 sts and 20 rows = 4" [10 cm] in stocking st.

17 sts and 32 rows = 4" [10 cm] in Mosaic St Pat.

## INSTRUCTIONS

### Notes:

- Carry yarn when not in use loosely up side of work, taking new color from behind old colors, being careful not to twist strands, when changing yarns at beg of row.
- When carrying yarn behind/in front of slipped sts, be sure yarn is loose enough to maintain gauge and prevent work from puckering.
- 2 rows RS and WS worked with only one color, then next 2 rows switch to one other color.

## MATERIAL

**Caron® One Pound™** (16 oz/454 g; 812 yds/742 m)

**Contrast A** Black (10503) **2 balls**

**Contrast B** Off White (10514) **1 ball**

**Caron® Jumbo™** (12 oz/340 g; 659 yds/602 m)

**Contrast C** Lush (09057) **1 ball**

Size U.S. 8 (5 mm) Susan Bates® Silvalume® circular knitting needle 36" [90.5 cm] long **or size needed to obtain gauge.** Susan Bates® yarn needle.

With A, cast on 163 sts. **Do not** join.

Working back and forth across needle in rows, knit 4 rows (garter st).

**Next row:** (Inc row - WS). (K14. Kfb) 10 times. K13. 173 sts (multiple of 18 sts + 11).

Proceed in Mosaic St Pat (see Chart I) as follows:

**1st row:** With B, \*(K1. Sl1Pwyib) 5 times. K8. Rep from \* to last 11 sts. \*(K1. Sl1Pwyib) 5 times. K1.

**2nd row:** K1. \*(Sl1Pwyif. K1) 4 times. Sl1Pwyif. P9. Rep from \* to last 10 sts. (Sl1Pwyif. K1) 5 times. Join A.

**3rd row:** With A, K10. \*(Sl1Pwyib. K1) 4 times. Sl1Pwyib. K9. Rep from \* to last st. K1.

**4th row:** K1. P9. \*(Sl1Pwyif. K1) 4 times. Sl1Pwyif. P9. Rep from \* to last st. K1.

**5th to 16th rows:** Rep 1st to 4th rows 3 times more.

**17th row:** With B, knit.

**18th row:** K1. Purl to last st. K1.

**19th to 36th rows:** As 1st to 18th rows, substituting A for B and B for A.

**37th to 52nd rows:** As 1st to 16th rows.

**53rd row:** With C, knit.

**54th row:** K1. Purl to last st. K1.

**55th to 70th rows:** As 1st to 16th rows, substituting C for A and A for B.

**71st row:** With A, knit.

**72nd row:** K1. Purl to last st. K1.

These 72 rows form Check Mosaic Pat I.

Rep last 72 rows of pat twice more, then 1st to 16th rows once.

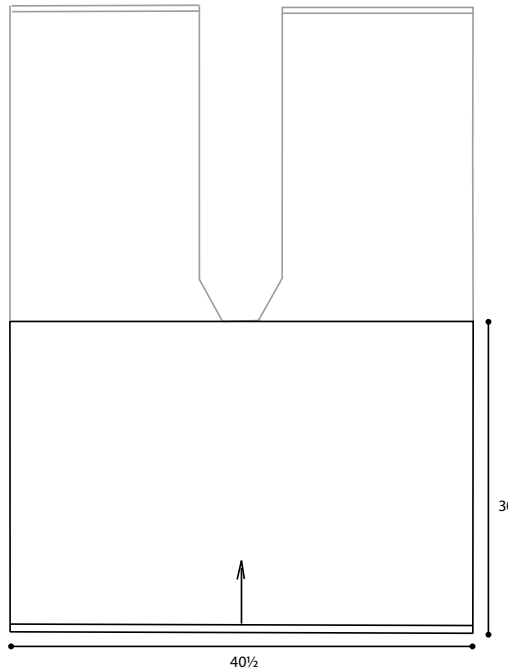
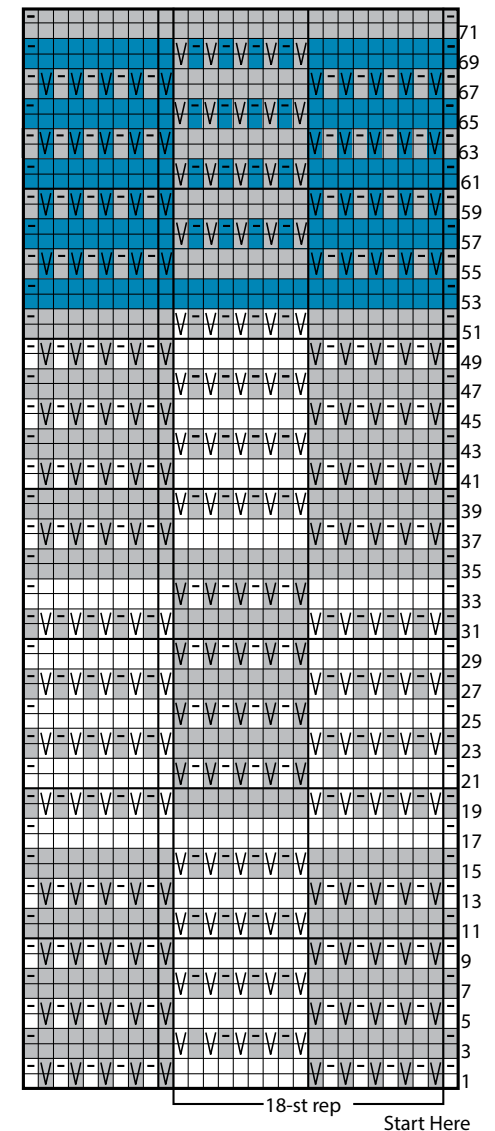


Chart I - Check Mosaic Pat I



Key

- Contrast A
- Contrast B
- Contrast C
- □ ■ With A or B or C, knit on RS rows. Purl on WS rows
- ■ ■ With A or B or C, purl on RS rows. Knit on WS rows
- ■ ■ Sl1Pwyib on RS rows.
- ■ ■ Sl1Pwyif on WS rows.

## Split for fronts and shape neck:

**1st row:** (RS). Pat across 79 sts.  
**Turn.** Leave rem sts on a spare needle. (See Chart II).

1st row of Chart II is complete.

Work 3 rows even in pat.

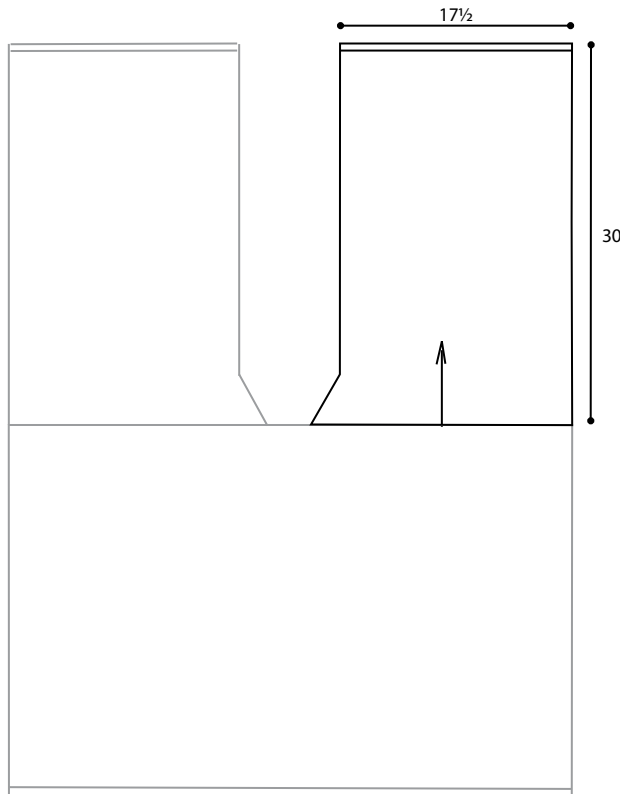
**1st row:** (RS). Pat to last 2 sts.  
 K2tog. 78 sts.

**2nd row:** P2tog. Pat to end of row.  
 Rep last 2 rows once more, then 1st row once. 74 sts.

Cont in Check Mosaic Pat II, noting 18-st rep will be worked 4 times with 1 st at each end of row as selvedge st in garter st until Front from dividing row (shoulder) measures same length as Back, ending on 16th, row of pat.

**Next row:** (Dec row - RS). With A, knit. (K11. K2tog) 5 times. K9. 69 sts.

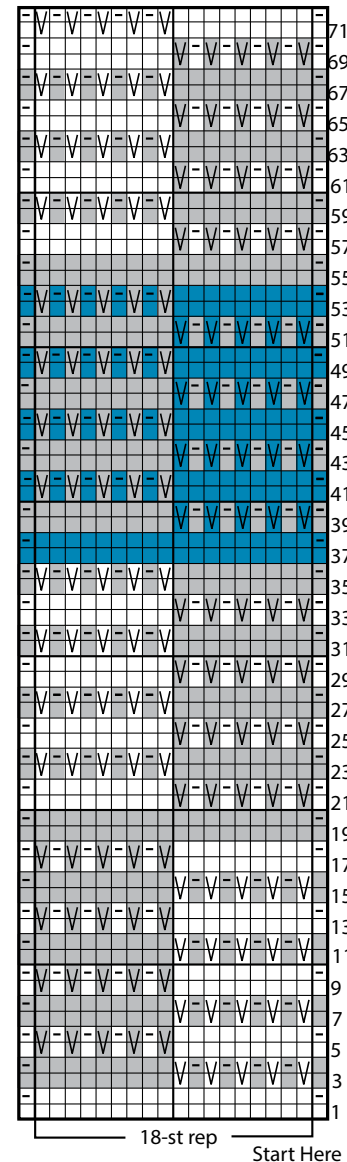
Knit 4 rows (garter st). Cast off knitwise (WS).



### Key

- Contrast A
- Contrast B
- Contrast C
- □ ■ With A or B or C, knit on RS rows. Purl on WS rows
- ■ ■ With A or B or C, purl on RS rows. Knit on WS rows
- ■ ■ S11Pwyib on RS rows.
- ■ ■ S11Pwyif on WS rows.

Chart II - Check Mosaic Pat II (Right Front)



With RS facing, slip next 15 sts onto a st holder, join corresponding color to rem sts and pat from spare needle across next 79 sts. (See Chart III.)

1st row of Chart III is complete.

Work 3 rows even in pat.

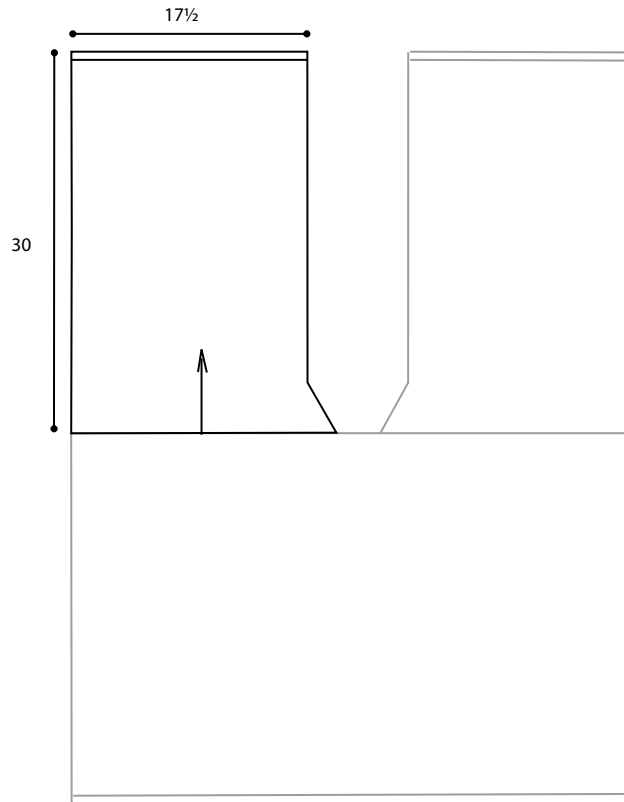
**1st row:** (RS). ssk. Pat to end of row. 78 sts.

**2nd row:** Pat to last 2 sts. P2togtbl. Rep last 2 rows once more, then 1st row once. 74 sts.

Cont in Check Mosaic Pat III (see Chart III), noting 18-st rep will be worked 4 times with 1 st at each end of row as selvedge st in garter st until front from dividing row (shoulder) measures same length as Back, ending on 16th row of pat.

**Next row:** (Dec row - RS). With A, knit, (K11. K2tog) 5 times. K9. 69 sts.

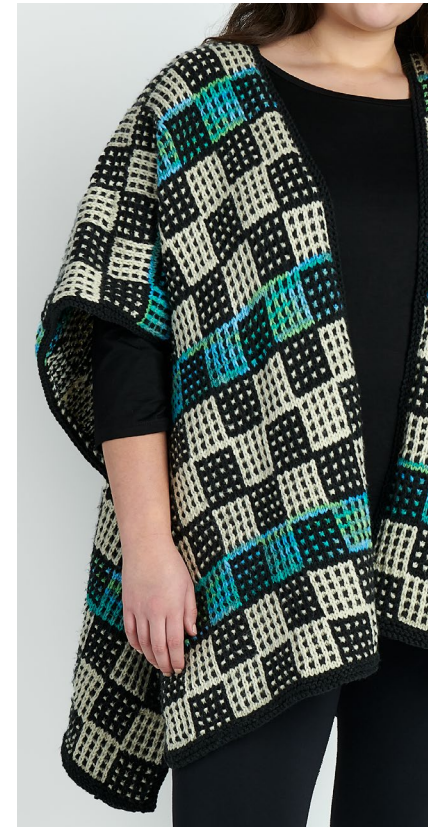
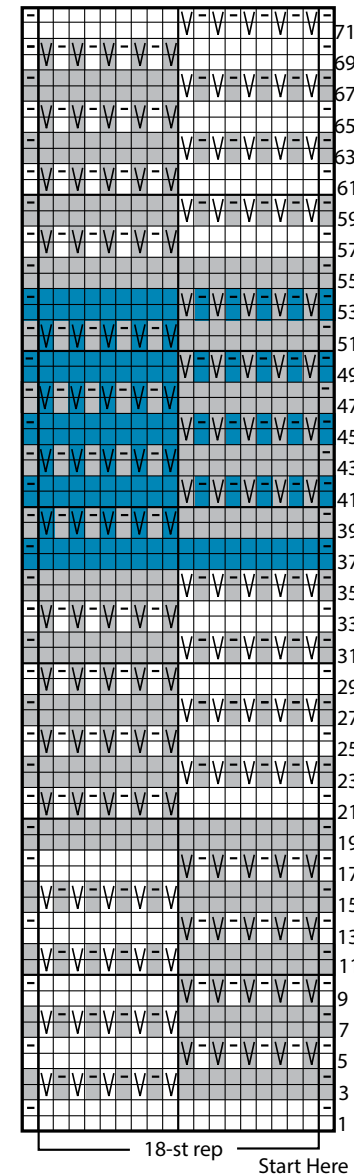
Knit 4 rows (garter st). Cast off knitwise (WS).



Key

- Contrast A
- Contrast B
- Contrast C
- □ ■ With A or B or C, knit on RS rows. Purl on WS rows
- □ ■ With A or B or C, purl on RS rows. Knit on WS rows
- ⌘ ⌘ ■ Sl1Pwyib on RS rows.
- ⌘ ⌘ ■ Sl1Pwyif on WS rows.

Chart III - Check Mosaic Pat III (Left Front)





**Front and neck edging:** With RS facing and A, pick up and knit 115 sts evenly spaced up right front edge. K15 from back neck st holder. Pick up and knit 115 sts evenly spaced down left front edge. 245 sts.

Knit 2 rows (garter st). Cast off knitwise (WS).

**Side edging:** With RS facing and A, pick up and knit 236 sts evenly spaced across side edge.

Knit 2 rows (garter st). Cast off knitwise (WS).

Rep for opposite side.

