

## CARON® GREAT CURVES KNIT PONCHO



### MATERIALS

**Caron® Simply Soft™** (5 oz/141 g; 250 yds/228 m)

<b>Sizes</b>	<b>XS/S</b>	<b>L/XL</b>	<b>2/5XL</b>	
Gray Heather Tweeds (23002)	<b>6</b>	<b>7</b>	<b>9</b>	<b>balls</b>

Size U.S. 7 (4.5 mm) knitting needles. U.S. 7 (4.5 mm) circular knitting needles 16" [40.5 cm] and 29" [74 cm] long **or size needed to obtain gauge.** 4 st holders. Stitch markers.



KNIT | SKILL LEVEL: **INTERMEDIATE**

### ABBREVIATIONS

**Alt** = Alternate(ing)  
**Beg** = Beginning  
**Cont** = Continue(ity)  
**Inc** = Increase  
**K** = Knit  
**K2tog** = Knit next 2 stitches together  
**P** = Purl  
**Pat** = Pattern  
**PM** = Place marker  
**Rem** = Remaining

**Rep** = Repeat  
**Rnd(s)** = Round(s)  
**RS** = Right side  
**Ssk** = Slip next 2 stitches knitwise one at a time. Pass them back onto left-hand needle, then knit through back loops together  
**St(s)** = Stitch(es)  
**Tog** = Together  
**WS** = Wrong side

### SIZES

**To fit bust measurement**

<b>XS/S</b>	<b>28-38" [71-96.5 cm]</b>
<b>L/XL</b>	<b>40-46" [101.5-117 cm]</b>
<b>2/5XL</b>	<b>48-62" [122-157.5 cm]</b>

### GAUGE

19 sts and 25 rows = 4" [10 cm] in stocking st

### INSTRUCTIONS

*The instructions are written for smallest size. If changes are necessary for larger sizes the instructions will be written thus ( ).*

*Numbers for each size are shown in the same color throughout the pattern. When only one number is given in black, it applies to all sizes.*

**Diamond Panel Pat** (worked over 4 sts). (See Chart on page 3).  
**1st row:** (RS). (K1. P1) twice.  
**2nd and alt rows:** Knit all knit sts, purl all purl sts as they appear.  
**3rd row:** P1. K3.  
**5th row:** As 1st row.  
**7th row:** K2. P1. K1.  
**8th row:** As 2nd row.  
 These 8 rows form Diamond Panel Pat.

## Back and Front (make alike)

With pair of needles, cast on **29 (37-45)** sts.

**1st row:** (RS). Work 1st row of Diamond Panel Pat to last st, noting 4-st rep will be worked **7 (9-11)** times. K1.

**2nd row:** P1. Work 2nd row of Diamond Panel Pat to end of row. Diamond Panel Pat is now in position.

**Shape sides:** Keeping cont of pat, cast on 4 sts at beg of next 10 rows to **69 (77-85)** sts, then inc 1 st each end of needle on next 14 rows, taking inc sts into pat. **97 (105-113)** sts.

Inc 1 st each end of needle on next and every following alt row 8 times more, taking inc sts into pat, ending on a RS row. **115 (123-131)** sts.

Work 3 rows even.

Inc 1 st each end of next and every following 4th row twice more, taking inc sts into pat and ending on a RS row. **121 (129-137)** sts.

Work 3 rows even. PM at each end of last row.

**Shape raglans:** Keeping cont of pat, proceed as follows:

**1st row:** (RS). K2. ssk. Pat to last 4 sts. K2tog. K2.

**2nd row:** P3. Pat to last 3 sts. P3.

**3rd rows:** K3. Pat to last 3 sts. K3.

**4th row:** As 2nd row.

Rep last 4 rows 14 times more.

**91 (99-107)** sts.

Proceed as follows:

**1st row:** (RS). K2. ssk. Pat to last 4 sts. K2tog. K2.

**2nd row:** P3. Pat to last 3 sts. P3.

Rep last 2 rows 25 times more.

Leave rem **39 (47-55)** sts on a st holder.

**Lower Ribbing:** With RS facing and longer circular needle, pick up and knit **155 (163-171)** sts along lower edge between markers. **Do not** join. Working back and forth across needle in rows, proceed as follows:

**1st row:** (WS). P1. \*K1. P1. Rep from \* to end of row.

**2nd row:** K1. \*P1. K1. Rep from \* to end of row.

Rep last 2 rows of (K1. P1) ribbing 4 times more, then 1st row once.

Cast off in ribbing.

## Sleeves

With pair of needles, cast on **41 (41-47)** sts.

**1st row:** (RS). K1. \*P1. K1. Rep from \* to end of row.

**2nd row:** P1. \*K1. P1. Rep from \* to end of row.

Rep last 2 rows of (K1. P1) ribbing until work from beg measures 4" [10 cm], ending on a RS row. PM at each end of last row.

**Next row:** (WS). \*P1. (P1. K1) in next st. Rep from \* to last **1 (1-3)** st(s). **P1 (1-3)** sts. **61 (61-69)** sts.

Proceed as follows:

**1st row:** (RS). Work 1st row of Diamond Panel Pat to last st, noting 4-st rep will be worked **15 (15-17)** times. K1.

**2nd row:** P1. Work 2nd row of Diamond Panel Pat to end of row. Diamond Panel Pat is now in position.

Keeping cont of pat, inc 1 st each end of needle on next and every following alt row 10 times more to **83 (83-91)** sts, then every following 4th row 3 times more, taking inc sts into pat and ending on a RS row. **89 (89-97)** sts.

Work 3 rows even.

**Shape raglans:** Keeping cont of pat, cast off 5 sts beg next 2 rows.

**79 (79-87)** sts.

**1st row:** (RS). K2. ssk. Pat to last 4 sts. K2tog. K2.

**2nd row:** P3. Pat to last 3 sts. P3.

**3rd rows:** K3. Pat to last 3 sts. K3.

**4th row:** As 2nd row.

Rep last 4 rows 25 times more.

**27 (27-35)** sts.

Proceed as follows:

**1st row:** (RS). K2. ssk. Pat to last 4 sts. K2tog. K2.

**2nd row:** P3. Pat to last 3 sts. P3.

Rep last 2 rows 3 times more. Leave rem **19 (19-27)** sts on a st holder.

## FINISHING

Pin all pieces to measurements. Cover with a damp cloth leaving cloth to dry.

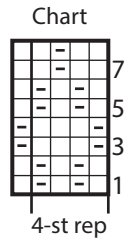
Sew Sleeve seams. Overlap Lower Ribbing at underarm and sew sides tog. Sew raglan and underarm seams.

## CARON® GREAT CURVES KNIT PONCHO

**Neckband:** With RS facing and shorter circular needle, beg at back left raglan seam, K19 (19-27) from Left Sleeve st holder. K39 (47-55) sts from Front st holder. K19 (19-27) from Right Sleeve st holder. K39 (47-55) sts from Back st holder. 116 (132-164) sts. Join in rnd. PM on first st.

**1st rnd:** \*K1. P1. Rep from \* around.

Rep last rnd 4 times more. Cast off in ribbing.



Key

□ = Knit on RS rows. Purl on WS rows.

▣ = Purl on RS rows. Knit on WS rows.

