



CROCHET | SKILL LEVEL: **EASY**

## ABBREVIATIONS

**Approx** = Approximately  
**Beg** = Beginning  
**Ch** = Chain(s)  
**Hdc** = Half double crochet  
**Pat** = Pattern  
**Rem** = Remaining

**Rep** = Repeat  
**RS** = Right side  
**Sl st** = Slip stitch  
**St(s)** = Stitch(es)  
**Tog** = Together  
**WS** = Wrong side

## MEASUREMENT

Approx 30" [76 cm] square.

## GAUGE

12 hdc and 8 rows = 4" [10 cm]

## INSTRUCTIONS

**Note:** Ch 2 at beg of row **does not** count as stitch.

## FRONT

**Weaving Strips** (Make 30 in MC, 15 each in A and B.)  
 Ch 92.

**1st row:** (RS). 1 hdc in 3rd ch from hook. 1 hdc in each ch to end of chain. Turn. 90 hdc.

**2nd row:** (WS) Ch 2. 1 hdc in each hdc to end of row. Fasten off.

## BACK (Make 2 pieces alike)

With MC, ch 89.

**1st row:** (RS). With MC, 1 hdc in 3rd ch from hook. 1 hdc in each ch to end of chain. Turn. 87 hdc.

**2nd row:** Ch 2. 1 hdc in each hdc to end of row. Turn.

Rep last row until work from beg measures 18" [45.5 cm]. Fasten off.

## MATERIALS

**Caron® One Pound™** (16 oz/453.6 g; 812 yds/742 m)

**Main Color (MC)** Sunflower (10549) **2 balls**

**Caron® Jumbo™** (12 oz/340 g; 595 yds/544 m)

**Contrast A** Picnic (09056) **1 ball**

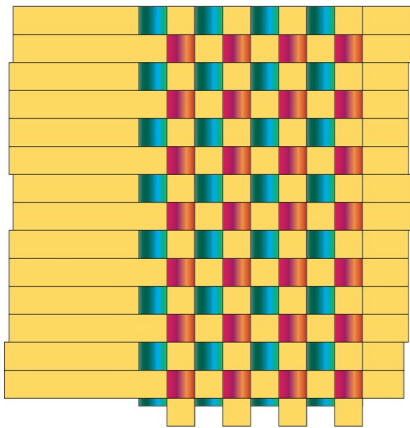
**Contrast B** Lush (09057) **1 ball**

Size U.S. I/9 (5.5 mm) crochet hook **or size needed to obtain gauge.**  
 30" [76 cm] square pillow form. Safety pins. Yarn needle.

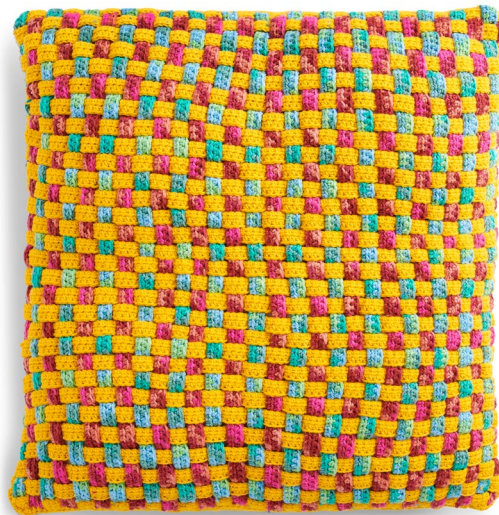
## FINISHING

### Front Weaving

Lay all MC Weaving Strips, RS up, with sides of long edges touching to form a square. Use safety pins to hold Weaving Strips tog along left side. Weave 1 A Strip, RS up, through the MC Strips. Weave 1 B Strip, RS up, in opposite Strips from A. Rep with rem Strips, alternating A and B. See Diagram. When weaving is complete, secure ends of Strips with safety pins. With RS facing, join MC with sl st to any corner. Ch 1. *Working through all thicknesses*, work sc evenly around 4 sides of Pillow, having 3 sc in each corner. Join with sl st to first sc. Fasten off.



**Joining Front and Back:** Overlap Back pieces to match Front, with WS tog leaving opening in center back to insert pillow form. With RS facing, join MC with sl st to any corner of Pillow. Ch 1. *Working through all thicknesses*, work sc evenly around 4 sides of Pillow, having 3 sc in each corner. Join with sl st to first sc. Fasten off. Insert pillow form.



FRONT



BACK