



CROCHET | SKILL LEVEL: **EASY**

ABBREVIATIONS

Approx =	Pat = Pattern	Sc = Single crochet
Approximately	Rem = Remain(ing)	Sl st = Slip stitch
Beg = Begin(ning)	Rep = Repeat	Sp = Space
Ch = Chain(s)	Rnd(s) = Round(s)	St(s) = Stitch(es)
Cont = Continue(ity)	RS = Right side	WS = Wrong side

MEASUREMENT

Approx 20" [51 cm] square.

GAUGE

12 sts and 12 rows = 4" [10 cm] in pat.

INSTRUCTIONS

Notes

- When changing colors, **do not** break yarn. Keep yarn not in use at back of work for next rnd.
- To create the color effect shown, you will be working from both the inside and outside of the ball – results will vary.
- The inside end of ball will be referred to as A. The outside end of ball will be referred to as B.
- You may wish to divide the ball into two at the start for ease of use.

Motif

With A - inside end of ball, ch 2. See diagram on page 2.

1st row: (1 sc. Ch 2) 4 times in 2nd ch from hook. Join with sl st to first sc.

2nd row: Join B – outside end of ball, with sl st in next ch-2 sp. **Do not** ch 1. (1 sc. Ch 2. 1 sc) in same ch-2 sp as sl st. (Corner made). *Ch 1. (1 sc. Ch 2. 1 sc) in next ch-2 sp. Rep from * 3 times more. Ch 1. Join with sl st to first sc. Drop B.

3rd row: With A, sl st in next ch-2 sp. (1 sc. Ch 2. 1 sc) in same ch-2 sp as sl st. *Ch 1. 1 sc in next ch-1 sp. Ch 1. (1 sc. Ch 2. 1 sc) in next ch-2 sp. Rep from * 3 times more. Ch 1. 1 sc in next ch-1 sp. Ch 1. Join with sl st to first sc. Drop A.

MATERIALS

Caron® Anniversary Cakes™ (35.3 oz/1000 g; 1061 yds/970 m)

Fuchsia Fusion (47011)

1 ball

Size U.S. L/11 (8 mm) crochet hook **or size needed to obtain gauge.** 20" [51 cm] square pillow form. Yarn needle.

4th row: With B, sl st in next ch-2 sp. (1 sc. Ch 2. 1 sc) in same ch-2 sp as sl st. *(Ch 1. 1 sc in next ch-1 sp) twice. Ch 1. (1 sc. Ch 2. 1 sc) in next ch-2 sp. Rep from * 3 times more. (Ch 1. 1 sc in next ch-1 sp) twice. Ch 1. Join with sl st to first sc. Drop B.

5th row: With A, sl st in next ch-2 sp. (1 sc. Ch 2. 1 sc) in same ch-2 sp as sl st. *(Ch 1. 1 sc in next ch-1 sp) 3 times. Ch 1. (1 sc. Ch 2. 1 sc) in next ch-2 sp. Rep from * 3 times more. (Ch 1. 1 sc in next ch-1 sp) 3 times. Ch 1. Join with sl st to first sc. Drop A.

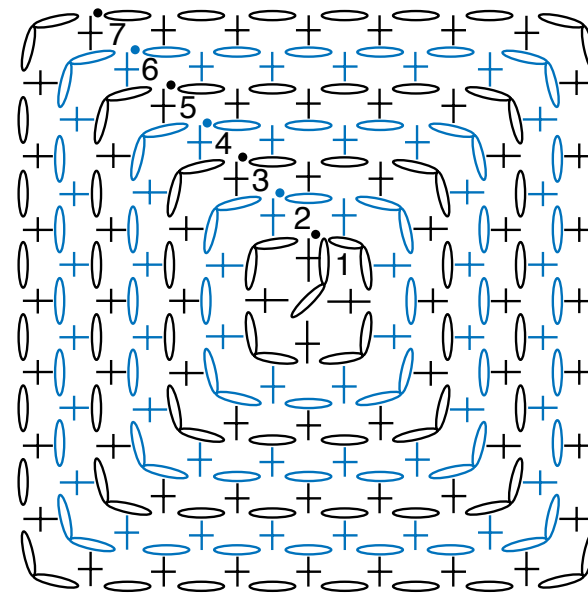
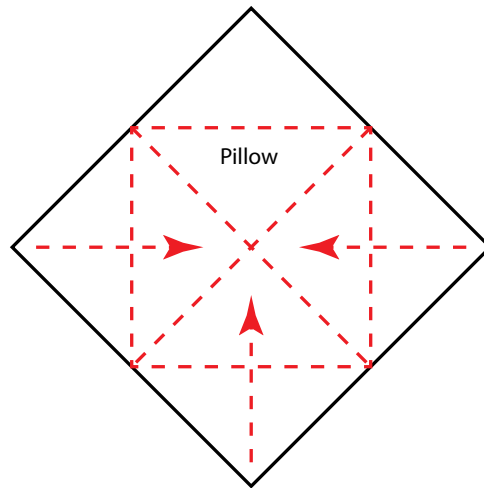
6th row: With B, sl st in next ch-2 sp. (1 sc. Ch 2. 1 sc) in same ch-2 sp as sl st. *(Ch 1. 1 sc in next ch-1 sp) 4 times. Ch 1. (1 sc. Ch 2. 1 sc) in next ch-2 sp. Rep from * 3 times more. (Ch 1. 1 sc in next ch-1 sp) 4 times. Ch 1. Join with sl st to first sc. Drop B.

7th row: With A, sl st in next ch-2 sp. (1 sc. Ch 2. 1 sc) in same ch-2 sp as sl st. *(Ch 1. 1 sc in next ch-1 sp) to next ch-2 corner. Ch 1. (1 sc. Ch 2. 1 sc) in next ch-2 sp. Rep from * 3 times more. (Ch 1. 1 sc in next ch-1 sp) to next corner. Ch 1. Join with sl st to first sc. Drop A.

Cont as established, working 1 rnd each in B and A, until piece measures 28" [71 cm], ending on any color. Fasten off.

FINISHING

Fold 3 corners to meet in center, with WS facing up (RS on outside), as shown in diagram to form a square. Sew seams, leaving 4th corner open to insert pillow form. Insert pillow form. Sew rem seam.



RNDS 1-7

- KEY**
- = chain (ch)
 - = slip stitch (sl st)
 - † = single crochet (sc)



FRONT



BACK