



CROCHET | SKILL LEVEL: **EASY**

ABBREVIATIONS

Approx =

Approximately

Beg = Beginning

Ch = Chain(s)

Dc = Double crochet

Dcfl = Double

crochet in front loop
only

Hdc = Half double
crochet

Pat = Pattern

Rem = Remaining

Rep = Repeat

RS = Right side

Sc = Single crochet

Scbl = Single crochet
in back loop only

Sl st(s) = Slip
stitch(es)

Sp(s) = Space(s)

St(s) = Stitch(es)

Tog = Together

WS = Wrong side

MEASUREMENT

Approx 18" [45.5 cm] square.

GAUGE

8 sc and 10 rows = 4" [10 cm].

INSTRUCTIONS

Note: When joining new balls of yarn take care to match color changes as closely as possible to maintain color striping repeat.

FRONT

Ch 40 (multiple of 11 ch + 7). See diagram on page 2.

1st row: (RS). Working into horizontal "bump" at back of each ch, 1 sc in 2nd ch from hook. 1 sc in each of next 3 ch. (1 hdc in next ch. 1 dc in each of next 7 ch. 1 hdc in next ch. 1 sc in each of next 2 ch) 3 times. 1 sc in each of last 2 ch. Turn. 39 sts.

2nd row: Ch 1. 1 sc in each of first 4 sc. (1 hdc in next hdc. 1 dc in each of next 3 dc. 1 dcfl in next st. 1 dc in each of next 3 dc. 1 hdc in next hdc. 1 sc in each of next 2 sc) 3 times. 1 sc in each of last 2 sc. Turn.

MATERIALS

Caron® Spice Cakes™ (8 oz/227 g; 239 yds/218 m)

Brave Wave (27008)

2 balls

Size U.S. L/11 (8 mm) crochet hook **or size needed to obtain gauge.** 18" [45.5 cm] square pillow form. Yarn needle.

3rd row: Ch 1. 1 sc in each of first 4 sc. (Ch 5. Skip next 4 sts. Sl st in rem loop of next dc 2 rows below. Ch 5. Skip next 4 sts. 1 sc in each of next 2 sc) 3 times. 1 sc in each of last 2 sc. Turn.

4th row: Ch 1. 1 sc in each of first 4 sc. (Working into sts 2 rows below and in front of ch-5 sp, 1 hdc in next hdc. 1 dc in each of next 3 dc. 1 dcfl in next st. 1 dc in each of next 3 dc. 1 hdc in next hdc. 1 sc in each of next 2 sc) 3 times. 1 sc in each of last 2 sc. Turn.

Rep last 2 rows for pat until work from beg measures approx 17½" [44.5 cm], ending on 3rd row.

Next row: (WS). Ch 1. 1 sc in each of first 4 sc. (Working into sts 2 rows below and in front of ch-5 sp, 1 hdc in next hdc. 1 dc in each of next 7 sts. 1 hdc in next hdc. 1 sc in each of next 2 sc) 3 times. 1 sc in each of last 2 sc. Fasten off.

BACK (make 2)

Ribbing: Ch 6.

1st row: (RS). 1 sc in 2nd ch from hook. 1 sc in each ch across. Turn. 5 sc.

2nd row: Ch 1. 1 scbl in each st to end of row. Turn.

Rep last row until work from beg (when slightly stretched) measures 18" [45.5 cm]. **Do not** fasten off.

Proceed as follows:

1st row: (WS). Turn work sideways. Ch 1. Work 36 sc evenly across side edge of ribbing. Turn.

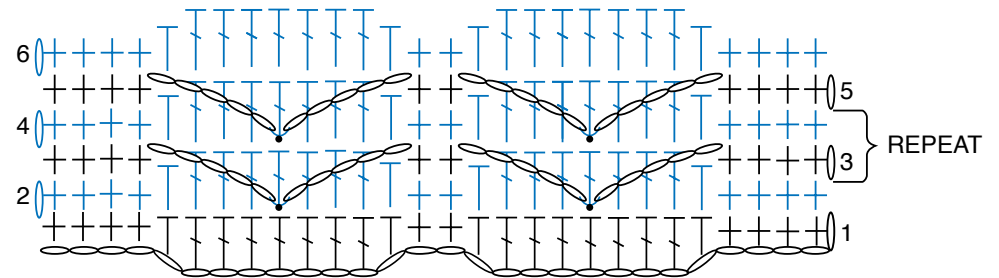
2nd row: (RS). Ch 1. 1 sc in each sc to end of row. Turn.

Rep last row until work from beg measures 11" [28 cm], ending on a WS row. Fasten off.

FINISHING

With RS tog, overlap Back pieces to match Front with ribbed sections in center to create opening to insert pillow form. Sew outer edge seams. Turn Pillow RS out. Insert pillow form.

Stitch Diagram



REDUCED SAMPLE OF PATTERN

STITCH KEY

- = chain (ch)
- = slip stitch (sl st)
- ⊥ = single crochet (sc)
- ⌋ = double crochet (dc)
- ∪ = working in front loop only



FRONT



BACK