



CROCHET | SKILL LEVEL: **EASY**

## ABBREVIATIONS

**Approx** = Approximately

**Beg** = Beginning

**Ch** = Chain(s)

**Dc** = Double crochet

**Pat** = Pattern

**Picot** = Ch 3. Sl st in first ch – Picot made.

**Rep** = Repeat(s)

**RS** = Right side

**Sc** = Single crochet

**Sl St** = Slip stitch

**Sp(s)** = Space(s)

**St(s)** = Stitch(es)

**Tog** = Together

**Tr** = Treble crochet

**WS** = Wrong side

## MEASUREMENTS

Approx 12" [30.5 cm] in diameter.

## GAUGE

5 V-sts and 5½ rows = 4" [10 cm] with 2 strands held tog.

13 sc and 15 rows = 4" [10 cm] with single strand.

## INSTRUCTIONS

### Wreath Cover

#### Stripe Pat

**With 1 strand each of A and B:**  
2 rows.

**With 2 strands of B:** 2 rows.  
These 4 rows form Stripe Pat.

## Notes:

- Ch 3 at beg of row counts as dc throughout.
- Leaf stitches (shells) are crocheted around post of dc V-sts from top to bottom, then from bottom to top
- Carry color not in use loosely up left side of work.

With 1 strand of each of A and B held tog, ch 28. See diagram on page 2.

**1st row:** (WS). (1 dc. Ch 1. 1 dc) in 7th ch from hook (counts as 1 dc and 1 V-stitch). \*Skip next 2 ch. (1 dc. Ch 1. 1 dc) in next ch – V-st made. Rep from \* to last 3 ch. Skip next 2 ch. 1 dc in last ch. Turn. 7 V-sts.

## MATERIALS

**Caron® Simply Soft®** (170 g/6 oz; 315 yds/288 m)

**Contrast A** Sage (7050) **1 ball**

**Contrast B** Dark Sage (9707) **3 balls**

**Contrast C** Burgundy (9762) **1 ball**

Size U.S. H/8 (5 mm) crochet hook **or size needed to obtain gauge.**  
12" [30.5 cm] styrofoam wreath form.

**2nd row:** Ch 3. (2 dc. 2 tr) down post of first dc of first V-st. Picot. (2 tr. 3 dc) up post of 2nd dc of the same V-st – beg leaf st made. \*Skip next V-st. (3 dc. 2 tr) down post of first dc of next V-st. Picot. Work (2 tr. 3 dc) up post of 2nd dc of the same V-st – leaf st made. Rep from \* to last dc. Sl st in last dc. Break A. Join B. Turn. 4 leaf sts.

**3rd row:** With 2 strands of B, ch 3. V-st in each V-st to end of row. 1 dc in last dc. Turn. 7 V-sts.

**4th row:** Sl st in first dc and next ch-1 sp. Skip next dc. \*Leaf st around next V-st. Skip next V-st. Rep from \* twice more. Sl st in next ch-1 sp and each of last 2 dc. Turn. 3 leaf sts. Break 1 strand of B. Join 1 strand of A.

**5th row:** With 1 strand of A and 1 strand of B, as 3rd row.

**6th row:** Leaf st around first V-st. \*Skip next V-st. Leaf st around next V-st. Rep from \* to last dc. Sl st in top of ch-3. Turn. 4 leaf sts.

Cont in Stripe Pat, rep 3rd to 6th rows for pat until work from beg measures approx 36" [91.5 cm] ending on a RS row with 2 strands of B. Fasten off.

## Bow

With single strand of C, ch 22.

**1st row:** (RS). 1 sc in 2nd ch from hook. \*Ch 1. Skip next ch. 1 sc in next ch. Rep from \* to end of chain. Turn.

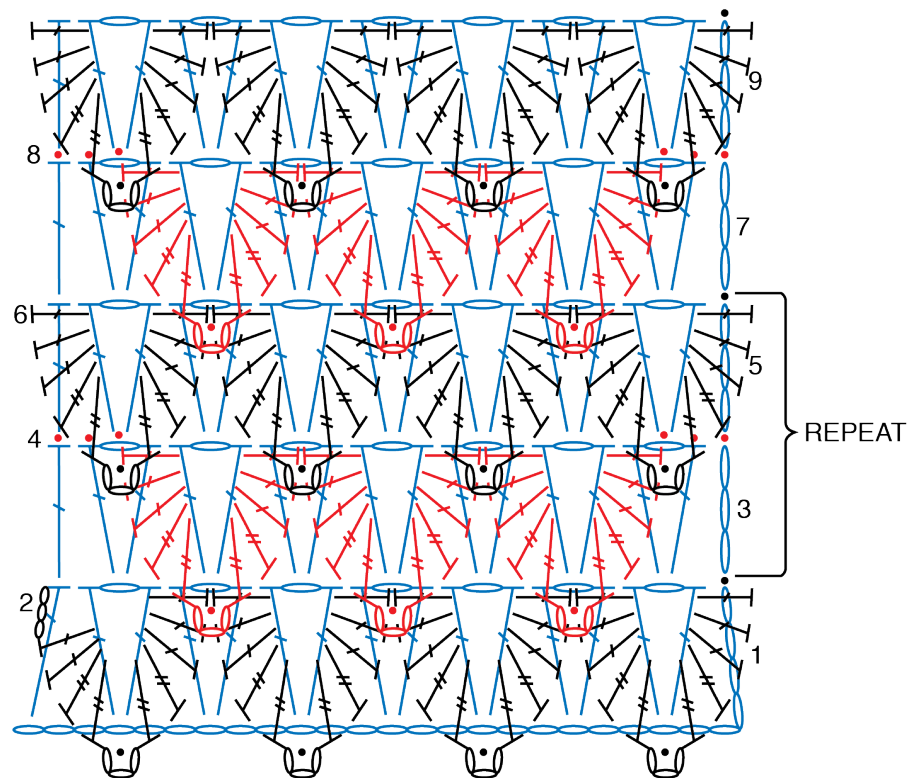
**2nd row:** Ch 1. 1 sc in first sc. 1 sc in next ch-1 sp. \*Ch 1. 1 sc in next ch-1 sp. Rep from \* to last sc. 1 sc in last sc. Turn.

**3rd row:** Ch 1. 1 sc in first sc. Ch 1. \*1 sc in next ch-1 sp. Ch 1. Rep from \* to last sc. 1 sc in last sc. Turn. Rep last 2 rows until work from beg measures 50" [127 cm]. Fasten off.

## FINISHING

Wrap Wreath Cover around wreath form smoothing evenly, and sew side edges tog at back. Sew foundation ch and last row of Wreath Cover tog.

Tie Bow into bow and sew to Wreath as seen in picture.



## STITCH KEY

- = chain (ch)
- = slip st (sl st)
- ⊥ = single crochet (sc)
- ⊥ = double crochet (dc)
- ⊥ = treble crochet (tr)
- ⊥ = picot