



CROCHET | SKILL LEVEL: **EASY**

ABBREVIATIONS

Approx = Approximately

Beg = Begin(ning)

Ch = Chain(s)

Dc = Double crochet

Pat = Pattern

Rem = Remain(ing)

Rep = Repeat

Rnd(s) = Round(s)

Sc = Single crochet

Sl st = Slip stitch

Sp(s) = Space(s)

St(s) = Stitch(es)

Tr = Treble crochet

Tr2tog = (Yoh) twice and draw up a loop in same st or ch sp

2 rows below as last tr worked. (Yoh and draw through 2 loops on hook) twice. (Yoh) twice and

draw up a loop in next skipped ch or st 2 rows below. (Yoh and draw through 2 loops on hook)

twice. Yoh and draw through rem 3 loops on hook

Yoh = Yarn over hook

MEASUREMENTS

Approx 44" x 56" [112 x 142 cm].

GAUGE

11 sc and 12 rows = 4" [10 cm].

INSTRUCTIONS

Note: Work all tr and tr2tog in front of work (not around sts).

Ch 120. *See diagram on page 2.*

1st row: (RS). 1 sc in 2nd ch from hook. 1 sc in each of next 2 ch.

*Ch 1. Skip next ch. 1 sc in each of next 3 ch. Rep from * to end of chain. 119 sts.

2nd row: Ch 3 (counts as dc). 1 dc in each st and ch-1 sp to end of row. Turn.

3rd row: Ch 1. 1 sc in first dc. 1 tr in next skipped ch 2 rows below. Skip next dc (behind tr). *1 sc in next dc. Ch 1. Skip next dc. 1 sc in next dc. Tr2tog. Skip next dc (behind Tr2tog). Rep from * to last 5 sts.

1 sc in next dc. Ch 1. Skip next dc. 1 sc in next dc. 1 tr in same skipped ch 2 rows below as last tr. Skip next dc (behind tr). 1 sc in top of ch 3. Turn.

4th row: As 2nd row.

MATERIALS

Caron® Jumbo Twirl™ (12 oz/340 g; 578 yds/528 m)

Canal Ribbon (83001)

4 balls or 2300 yds/2090 m

Size U.S. K/10½ [6.5 mm] Susan Bates® Silvalume® crochet hook **or size needed to obtain gauge.** Susan Bates® yarn needle.

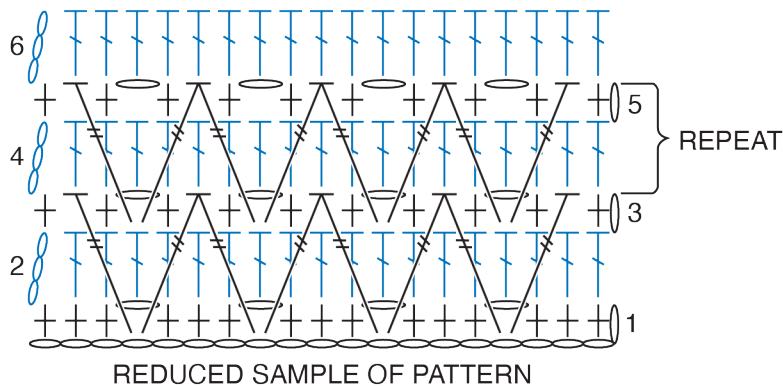
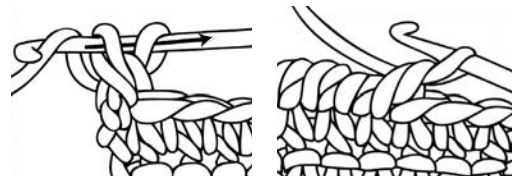
5th row: Ch 1. 1 sc in first dc. 1 tr in next skipped dc 2 rows below. Skip next dc (behind tr). *1 sc in next dc. Ch 1. Skip next dc. 1 sc in next dc. Tr2tog. Skip next dc (behind Tr2tog). Rep from * to last 5 sts. 1 sc in next dc. Ch 1. Skip next dc. 1 sc in next dc. 1 tr in same skipped dc 2 rows below as last tr. Skip next dc (behind tr). 1 sc in top of ch 3. Turn.

Rep 2nd to 5th rows for pat until work from beg measures approx 56" [1425 cm], ending on a 3rd or 5th row of pat. Fasten off.

Edging: 1st rnd: (RS). Join yarn with sl st in any corner of Blanket. Ch 1. Work 3 sc in same sp. Work sc evenly around outer edges, working 3 sc in each corner. Join with sl st in first sc.

2nd rnd: Ch 1. Working from **left to right** instead of from **right to left** as usual, work 1 reverse sc in each sc around. Join with sl st in first sc. Fasten off.

REVERSE SC DIAGRAM



STITCH KEY

- = chain (ch)
- ⊥ = single crochet (sc)
- ⊥ = double crochet (dc)
- ⊥ = treble crochet (tr)
- ⊥ = treble crochet 2 together (tr2tog)